



Vendor: Cisco

Exam Code: 352-001

Exam Name: CCDE Design Expert Written Exam, v2.1

Version: DEMO

QUESTION 1

A company will integrate an IPv6 application into their network and wants to develop a test environment to evaluate application performance across the network. This application consists of both unicast and multicast traffic. The company wants to do this testing only in certain locations of its existing IPv4-only network, and all chosen locations should communicate with each other. Which tunneling technology works in this scenario?

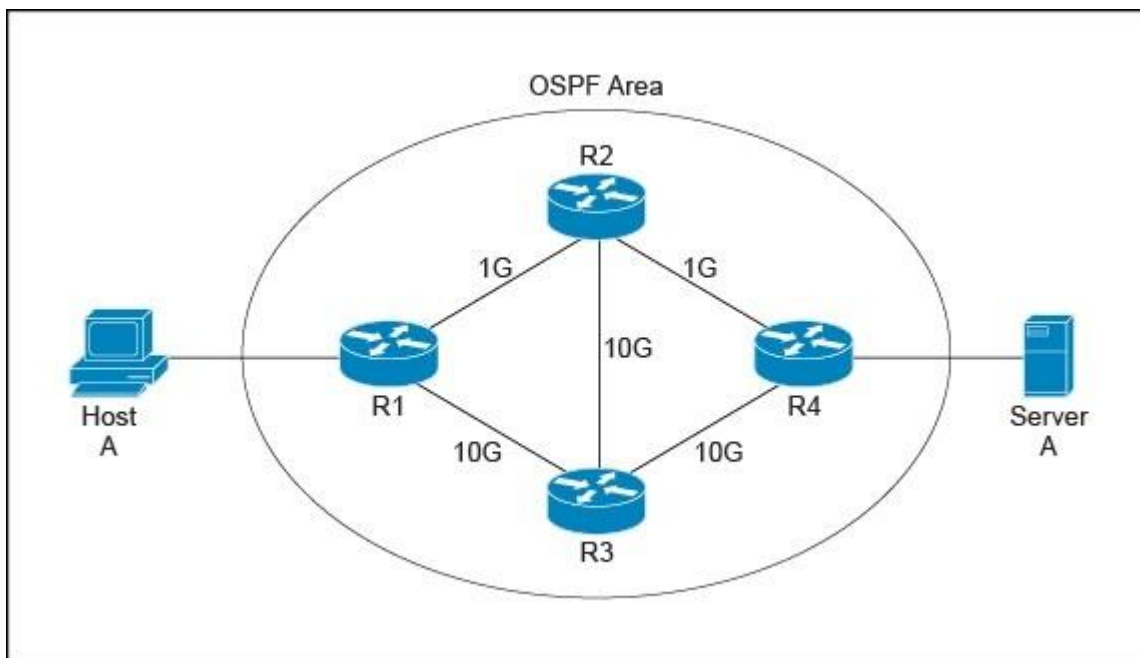
- A. ISATAP
- B. 6PE
- C. DMVPN
- D. 6to4

Answer: C

QUESTION 2

Refer to the exhibit. After this new OSPF design with per-packet load balancing was implemented, Host A reported that large file downloads from Server A became slow and sometimes failed.

The operations team discovered that packets are arriving out of order on R1. The operations team discovered that packets are arriving out of order on R1. Which cost-conscious redesign action will fix the issue?



- A. Upgrade all links to 10 Gb/s.
- B. Adjust MTU sizes to 1500 on all interfaces.
- C. Adjust the OSPF auto-cost reference bandwidth on R4.
- D. Adjust the OSPF auto-cost reference bandwidth on all routers.

Answer: D

QUESTION 3

Which option forces traffic to take an explicit route across a backbone network?

- A. IGP cost
- B. TE metric
- C. TE affinity
- D. multiple IGP

Answer: B

QUESTION 4

A mobile network operator is designing an NGN backhaul and plans to migrate their legacy SDH and SONET-based transport network to a packet-based transport network. The NGN network must achieve similar failover and failback times as the legacy network (50 milliseconds). Which method does allow for similar failover and failback times on the new packet-based network?

- A. BFD
- B. E-OAM
- C. UDLC
- D. BPDU

Answer: B

QUESTION 5

Which statement describes the main difference between the Layer 2 loop-free inverted U design and the Layer 2 loop-free U design?

- A. A loop-free U design has all uplinks active, but a loop-free inverted U design does not.
- B. A loop-free inverted U design has all uplinks active, but a loop-free U design does not.
- C. A loop-free U design extends VLANs between access switches, but a loop-free inverted U design does not.
- D. A loop-free U design extends VLANs between distribution switches, but a loop-free inverted U design does not.

Answer: C

QUESTION 6

An enterprise company needs to transport multicast traffic between its hub-and-spoke WAN routers over an MPLS Layer 3 VPN provider that does not currently support multicast. Which option describes how this enterprise can achieve this requirement in a cost-effective way?

- A. Use MSDP over the WAN.
- B. Enable multicast routing on the WAN physical and tunnel interfaces.
- C. Create multicast-enabled GRE tunnels over the WAN between the hub-and-spoke routers.
- D. Provide an Internet link to each site and use DMVPN over the Internet.

Answer: C

QUESTION 7

In a Cisco ACI environment, which option best describes "contracts"?

- A. a set of interaction rules between endpoint groups
- B. a Layer 3 forwarding domain
- C. to determine endpoint group membership status
- D. named groups of related endpoints

Answer: C

QUESTION 8

You are developing the routing design for two merging companies that have overlapping IP address space. What must you consider when developing the routing and NAT design?

- A. Global to local NAT translation is done before routing.
- B. Local to global NAT translation is done after routing.
- C. Global to local NAT translation is done after policy-based routing.
- D. Local to global NAT translation is done before policy-based routing.

Answer: D

QUESTION 9

Which option should be part of your network design to support dynamic mutual redistribution between multiple OSPFv2 and IS-IS boundaries, to avoid suboptimal routing?

- A. route tagging and administrative policies
- B. route filtering and administrative policies
- C. route aggregation and administrative policies
- D. disabling IS-IS wide metrics

Answer: B

QUESTION 10

After a large EIGRP network had automatic summarization enabled throughout, it started experiencing routing loops. Which action should you take to quickly resolve the routing loops yet continue to perform summarization?

- A. Replace the automatic summarization with more specific summary routes.
- B. Redesign the IP addressing scheme.
- C. Redistribute connected routes at major IP network boundaries.
- D. Increase the AD of the automatically summarized routes.

Answer: A

Thank You for Trying Our Product

Lead2pass Certification Exam Features:

- ★ More than **99,900** Satisfied Customers Worldwide.
- ★ Average **99.9%** Success Rate.
- ★ **Free Update** to match latest and real exam scenarios.
- ★ **Instant Download** Access! No Setup required.
- ★ Questions & Answers are downloadable in **PDF** format and **VCE** test engine format.
- ★ Multi-Platform capabilities - **Windows, Laptop, Mac, Android, iPhone, iPod, iPad.**
- ★ **100%** Guaranteed Success or **100%** Money Back Guarantee.
- ★ **Fast**, helpful support **24x7**.



View list of all certification exams: <http://www.lead2pass.com/all-products.html>



Microsoft



ORACLE



CITRIX



JUNIPER
NETWORKS



EMC²
where information lives®

10% Discount Coupon Code: ASTR14