

**Exam Code:** 1z0-131

**Exam Name:** Build internet applications i

**Vendor:** Oracle

**Version:** DEMO

## Part: A

1: Which two data block properties can be set to abort a long running query? (Choose two.)

- A.Number of Records Buffered
- B.Numbers of Records Displayed
- C.Query Array Size
- D.Maximum Query Time
- E.Query All Records
- F.Maximum Records Fetched

**Correct Answers: D F**

2: You have written some generic PL/SQL code which loops through the invoked form, getting and setting the global variables in the form. Which two built-ins would you use in this code to get and set these variables and their values? (Choose two.)

- A.COPY
- B.NAME\_IN
- C.GET\_ITEM\_PROPERTY
- D.GET\_BLOCK\_PROPERTY
- E.GET\_PARAMETER\_LIST
- F.GET\_APPLICATION\_PROPERTY

**Correct Answers: A B**

3: Which built-in subprogram can you use to navigate to the instance of the current item in the previous record?

- A.PREVIOUS\_RECORD
- B.UP
- C.SCROLL\_UP
- D.PREVIOUS\_BLOCK

**Correct Answers: B**

4: In Form Builder you attempt to compile a trigger. You receive a compilation error that gives no clear indication of the problem. What are two likely causes? (Choose two.)

- A.dividing by zero
- B.missing semicolon
- C.mismatched quotes
- D.mistyped variable name
- E.trigger defined on wrong item
- F.trigger defined at wrong level

**Correct Answers: B C**

5: You are creating summary items that summarize the same item in a data block by performing different functions, such as Sum, Avg, Max, and Min. Design rules require you to place summary items in a control block. Which properties should be set in the control and data blocks to enable your task?

- A.The Single Record property must be set to Yes for the control block, and the Query All Records property must be set to Yes for the data block.
- B.The Number of Records Displayed property must be set to Yes for the control block, and the Number of Records Buffered property must be set to All for the data block.
- C.The Query All Records property must be set to Yes for the data block, and the Precompile Summaries property must be set to Yes for the control block.
- D.The Query All Records property must be set to Yes for the control block, and the Precompile Summaries property must be set to Yes for the data block.

**Correct Answers: A**

6: Which two item properties' settings affect the standard checks performed during item validation? (Choose two.)

- A.Font Name
- B.Format Mask
- C.Conceal Data
- D.Case Restriction
- E.Lowest Allowed Value
- F.Number of Items Displayed

**Correct Answers: B E**

7: You created a form that has two data blocks. Which two default navigation methods can a user employ to move the cursor from the first block to the second block? (Choose two.)

- A.Press the [NEXT BLOCK] function key.
- B.Click an item in the second block with the mouse.
- C.Click the single right-arrow icon on the menu toolbar.
- D.Right-click an item in the first block, and choose Next Block from the pop-up menu.

**Correct Answers: A B**

8: You have created a form that has a block to create an address and perform a mail merge with a selected Word document. You would like to use this block in other forms. How could you package this block and its canvas for reuse?

- A.Smart Class
- B.Object Group
- C.Record Group
- D.Property Class
- E.PL/SQL Library

**Correct Answers: B**

9: The EMPLOYEE form contains the CV\_SALARY, CV\_EMP, and CV\_HELP content canvases. Each canvas is displayed in its own window. How could you toggle between the CV\_SALARY and CV\_EMP canvases without closing the CV\_HELP canvas?

- A.Create the CV\_HELP canvas in a modal window.
- B.Create the CV\_SALARY and CV\_EMP canvases in modal windows.
- C.Create all three canvases in modeless windows.

D.A canvas must be dismissed before another canvas can become active.

**Correct Answers: C**

10: You created the EMP\_DATA data block in the EMPLOYEE form based on all the columns of the EMP table. After viewing the prototype, users are asking that you remove the SALARY column from the layout. This column is used in the data block to perform bonus calculations.

How would you remove this column from the layout while leaving it in the data block?

A.You must delete the EMP\_DATA data block and recreate it.

B.Select the Salary item in the Layout Editor and press DELETE.

C.You must remove the column from the data block to remove it from the layout.

D.Select the frame surrounding the EMP\_DATA data block in the Layout Editor, click the Layout Wizard tool, and remove the SALARY column from the Displayed Items list.

E.Select the EMP\_DATA data block in the Object Navigator, choose Tools->Data Block Wizard, and remove the SALARY column from the included list. The SALARY column will automatically be removed from the layout.

F.Double-click the EMP\_DATA data block in the Object Navigator to launch the Data Block Wizard, remove the SALARY column from the included columns, enter the Layout Wizard, and remove the SALARY column from the Displayed Items list.

**Correct Answers: D**

11: You are creating the ORDERS form that contains a text item called Date\_Ordered. How could you ensure that when a new record is entered, the Date\_Ordered item displays the current date in DD-MON-YYYY format?

A.In the Date\_Ordered Item Property Palette, set the Initial Value property to \$\$date\$\$.

B.In the Date\_Ordered Item Property Palette, set the Default Value property to SYSDATE.

C.You must use a Pre-Insert trigger to accomplish this task.

D.You must use a Pre-Commit trigger to accomplish this task.

**Correct Answers: A**

12: Which built-in allows you to dynamically change the alert message text?

A.SET\_ALERT\_MESSAGE

B.SET\_ALERT\_PROPERTY

C.CHANGE\_ALERT\_PROPERTY

D.CHANGE\_MESSAGE\_ALERT

**Correct Answers: B**

13: You are customizing default functionality of an image item so that the image displays when a user single-clicks the item. Which trigger would you use to accomplish the task?

A.When-New-Item-Instance

B.When-Image-Activated

C.When-Image-Pressed

D.When-Validate-Item

**Correct Answers: C**

14: Which two operations create a text item? (Choose two.)

- A. use the Create icon in the Layout Editor
- B. convert an existing item into a text item by setting its Item Type property
- C. use the text item tool in the Object Navigator
- D. use the text item tool in the Layout Editor
- E. select Field--->New--->Text Item from the menu

**Correct Answers: B D**

15: You want to capture the username and password of the current user. Which built-in subprogram can you use?

- A. GET\_APPLICATION\_PROPERTY
- B. GET\_RELATION\_PROPERTY
- C. GET\_VIEW\_PROPERTY
- D. GET\_FORM\_PROPERTY

**Correct Answers: A**

16: You can use a When-List-Activated trigger to trap a user selection. For which list item style can you do this?

- A. T-list
- B. pop-list
- C. combo box
- D. any style

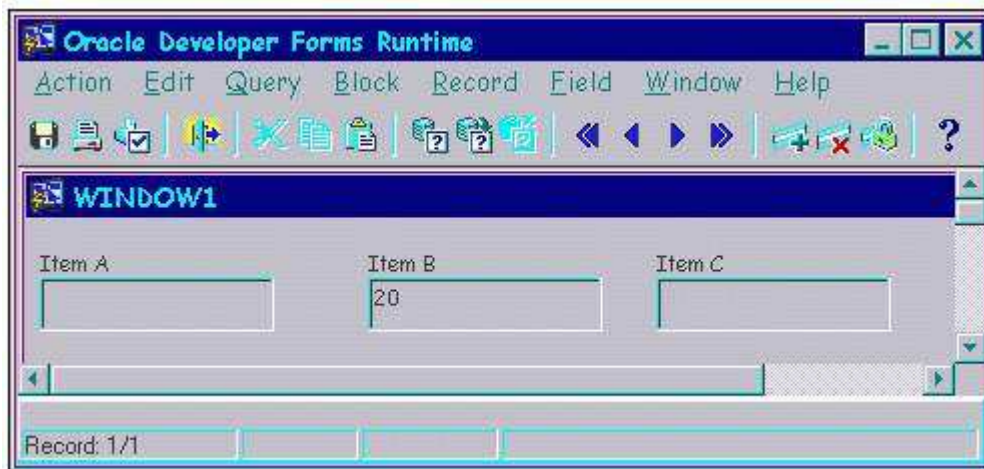
**Correct Answers: A**

17: Click the Exhibit button.

All items have been created with default properties. There is a Pre-Text-Item trigger on Item B with the following code:

```
if :blockname.item_b > '10' then
    raise form_trigger_failure;
end if;
```

The cursor is in Item A. You press [Tab]. Which statement is true?



A. Input focus will change to Item C.

- B.External navigation will not occur.
- C.Internal navigation will not occur.
- D.The form will exit due to a fatal error.
- E.A message indicating navigation failure will automatically be displayed.

**Correct Answers: B**

18: Which built-in subprogram can be used to create global variables?

- A.NAME\_IN
- B.COPY
- C.DEFAULT\_VALUE
- D.LIST\_VALUES

**Correct Answers: C**

19: Which property type can be created by overriding a property set by a property class?

- A.Block
- B.Variant
- C.Item
- D.Inherited

**Correct Answers: B**

20: How could you associate a data block with more than one frame?

- A.Use the Layout Wizard in reentrant mode to associate the data block with an additional frame.
- B.Alter the Frame value in the Property Palette for the data block.
- C.Use the Data Block Wizard in reentrant mode to associate the data block with an additional frame.
- D.A data block can be associated with only one frame.

**Correct Answers: D**