

Exam Code: NS0-151

Exam Name: Network Appliance SAN Exam 7G

Vendor: Network Appliance

Version: DEMO

Part: A

1: Which two of the following commands can be used to enable space reservations for a LUN?

- A.lun create
- B.lun set reservation
- C.fcp -r <lun_path>
- D.iscsi -r <lun_path>

Correct Answers: A B

2: Cloning a LUN from a snapshot will cause that snapshot to be _____.

- A.recreated
- B.corrupted
- C.locked
- D.destroyed

Correct Answers: C

3: For long-term use, a writeable snapshot of a LUN should be turned into a LUN clone.

- A.True
- B.False

Correct Answers: A

4: What is the outcome of the following command ?

```
lun create -b /vol/vol2/.snapshot/testsnap/lun0 /vol/vol2/lun0.clone
```

- A.It creates a duplicate of the clone process of lun0.
- B.It creates a clone of the writeable snapshot of lun0.
- C.It creates a writeable snapshot of lun0.
- D.It creates a snapshot "testsnap" of vol2.

Correct Answers: C

5: When using SnapRestore to restore a single LUN, the LUN must be _____.

- A.mounted on a host
- B.mapped to a Windows server
- C.exported and accessible
- D.taken offline or unmapped

Correct Answers: D

6: The writeable snapshot that is created for a LUN clone depends on _____.

- A.mirroring
- B.the snapshot taken at the time the clone was created
- C.exclusive access to the volume
- D.the data in the original LUN not changing

Correct Answers: B

7: After you clone a LUN, it is a best practice that you _____.

- A.delete the snapshot created by the writeable snapshot
- B.copy the clone to a new volume as soon as possible and delete the old clone
- C.create a snapshot of the original LUN in the event that the clone changes
- D.expand the LUN so that the host does not encounter ENOSPC errors

Correct Answers: A

8: What is the difference between hard and soft zoning?

- A.Soft zones are based on WWNs/WWPNs.
- B.Hard zones are based on WWNs/WWPNs.
- C.Soft zones are based on domain IDs and port IDs.
- D.None of the above is correct.

Correct Answers: A

9: Please click the "Exhibit" button.

Based on the lun show -m output, what can you determine from the LUNs that are mapped to "via RPC"?

LUN path	Mapped to	LUN ID
/vol/vol1/QTUser3/User3luna	UserXig	2
/vol/vol1/QTUserX/UserXiSCSI	UserXiSCSI	0
/vol/vol1/QTUserX/UserXluna	serXig	1
/vol/vol1/QTUserX/userxlunx.lun	viaRPC.10:00:00:00:c9:2d:61:fa	0
/vol/vol1/advitedb.lun	viaRPC.10:00:00:00:c9:2d:61:fa	2

- A.The LUNs were mapped manually.
- B.The LUNs were mapped using rsh.
- C.The LUNs were mapped using SnapDrive.
- D.The LUNs were mapped using lun setup.

Correct Answers: B

10: Space reservations are useful in SAN iSCSI and FCP LUN environments.

- A.True
- B.False

Correct Answers: A

11: Applications, such as databases, running on NAS or iSCSI or FCP SAN must be _____.

- A.prepared for snapshots by flushing buffers to disk and momentarily suspending activity
- B.disconnected from their storage resources during the snapshot
- C.using dynamic multipathing during a backup
- D.mirrored with a host-based volume manager to be backed-up

Correct Answers: A

12: Given that there is no real flow control in FCP SAN, attention should be given to monitoring

queue depths.

A.True

B.False

Correct Answers: A

13: What are the minimum and maximum LUN sizes on a NetApp storage appliance using iSCSI and a Microsoft Windows 2000 Server?

A.Minimum 11.5 MB, Maximum 2TB

B.Minimum 21.5 MB, Maximum 2.5TB

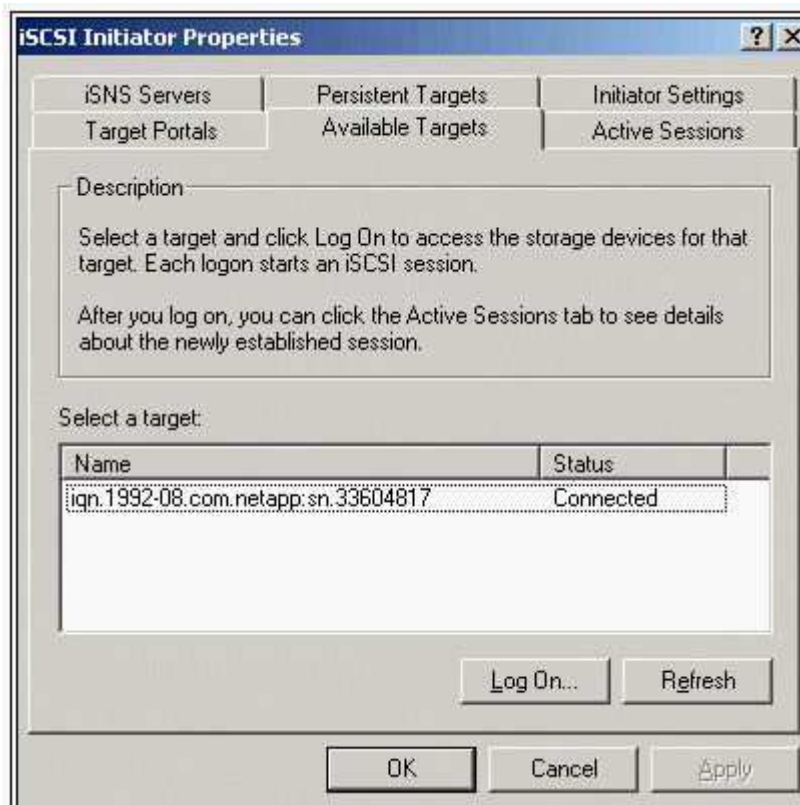
C.Minimum 31.5 MB, Maximum 2TB

D.Minimum 41.5 MB, Maximum 2.5TB

Correct Answers: C

14: Please click the "Exhibit" button.

The target name "iqn.1992-08.com.netapp:sn33604817" appears on the Windows iSCSI Initiator Properties screen. What command on the storage appliance will display the target name?



A.iscsi show initiators

B.iscsi show adapters

C.iscsi nodename

D.iscsi config

Correct Answers: C

15: Which of the following commands would you use to verify the iSCSI service is running?

A.license add iSCSI

B.iscsi service

C.iscsi status

D.iscsi protocol

Correct Answers: C