



Vendor: Android

Exam Code: OA0-002

Exam Name: Android Application Engineer Certifications
Basic

Version: DEMO

QUESTION 1

Which of these is the correct explanation of the UI/Application Exerciser Monkey (Monkey tool)?

- A. It can execute tests covering all events.
- B. It can execute stress tests and sometimes discover new bugs.
- C. Even if an error is discovered, it cannot repeatedly reproduce the same operating state
- D. Since it reduces the interval between events as much as possible, it operates in a heavily- loaded state.

Answer: B

QUESTION 2

Which of these is the incorrect explanation of the Android SDK and AVD Manager?

- A. They are provided from version 1.6 of the SDK. Up to Version 1.5, there was an AVD Manager but it lacked SDK management functions.
- B. You can create and startup AVD, and on startup you can delete user data up to that point.
- C. The "android" command can be used if "<SDK install folder>/tools" is added to the command path.
- D. The development tools that can be downloaded from Android SDK and AVD Manager are SDK-platform, NDK-platform, emulator images, and USB drivers for handsets.

Answer: D

QUESTION 3

Which is the correct explanation of the Foo.java source code?

```
01: class Foo {
02:     private native String bar(String s, int i , int j);
03:
04:     public static void main (String[] args) {
05:         Foo foo = new Foo();
06:         String str = foo.bar("JNI Problem", 2, 3);
07:         System.out.println(str);
08:     }
09:
10:     static {
11:         System.loadLibrary("Foo");
12:     }
13: }
```

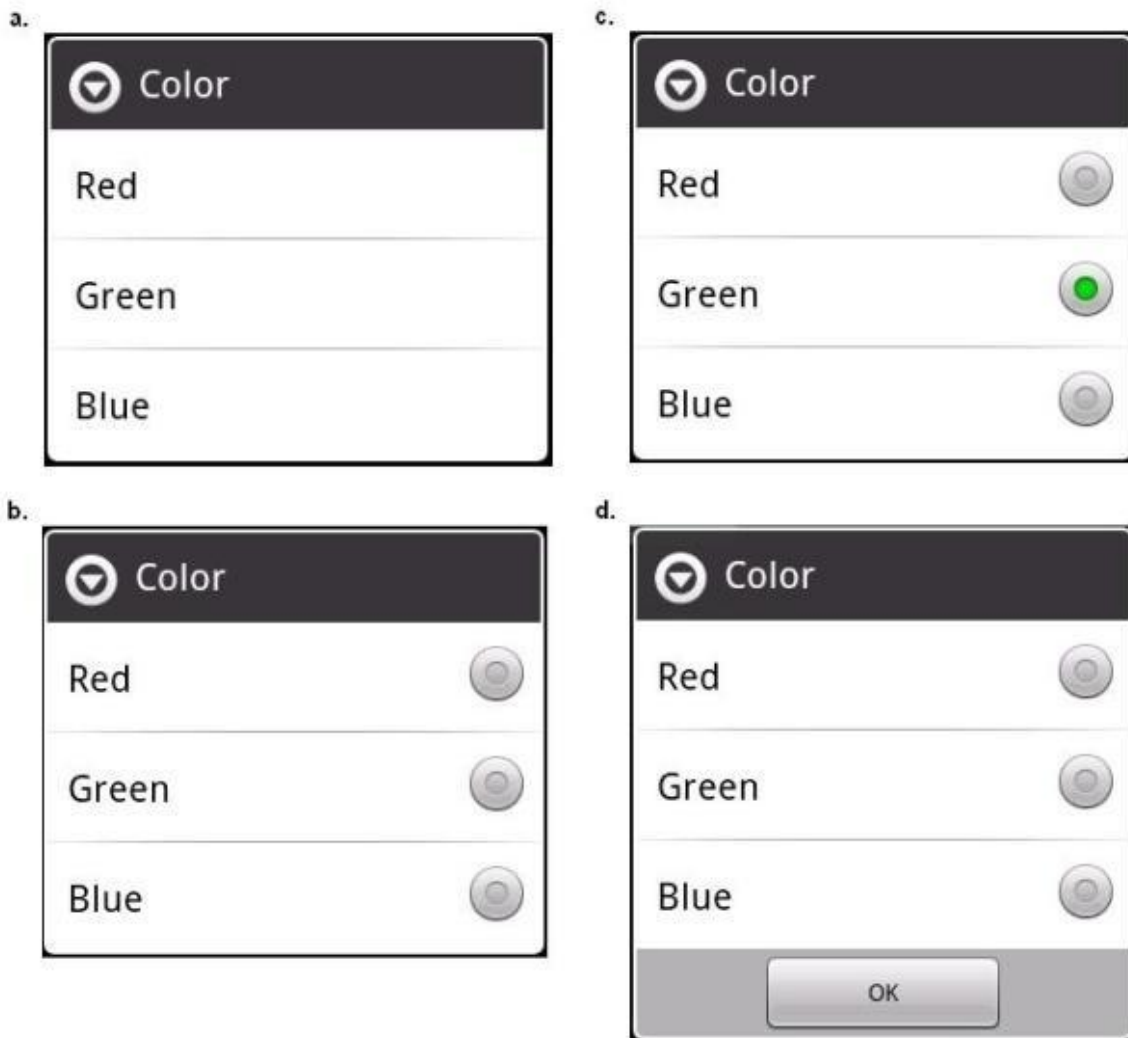
- A. Since mapping will occur to C/C++, int must be declared as jint.
- B. String, which is a reference type, cannot be used in the native method
- C. Visibility cannot be declared as private in the native method.
- D. The compile will succeed without problems.

Answer: D

QUESTION 4

Which of the following dialogs is displayed at the time of executing the given code? (Assume no problems in the rest of the application.)

```
01: AlertDialog.Builder builder = new AlertDialog.Builder(this);  
02: builder.setTitle("Color");  
03: builder.setSingleChoiceItems(new String[]{"Red","Green","Blue"}, 1, null);  
04: AlertDialog dialog = builder.create();  
05: dialog.show();
```



- A. Option a
- B. Option b
- C. Option c
- D. Option d

Answer: C

QUESTION 5

Which of these is the correct explanation regarding the following methods?

(1) `android.content.Context.sendBroadcast`
(2) `android.content.Context.startActivity`

- A. Both methods are defined by overloading.
- B. Both methods throw an exception.
- C. Both methods are asynchronous.
- D. Both methods are able to broadcast an Intent.

Answer: D

QUESTION 6

Which of these is the incorrect role for an Intent?

- A. Start an Activity
- B. Start a BroadcastReceiver
- C. Start a ContentProvider
- D. Start a Service

Answer: C

QUESTION 7

Which is not included in the Android application framework?

- A. WindowManager
- B. NotificationManager
- C. DialerManager
- D. PackageManager

Answer: C

QUESTION 8

The emulator supports mounting disk image files instead of an actual SD card. Which is the correct creation method of this?

- A. `mksdcard -l 2048 mysd.img`
- B. `mksdcard -create -l mysd 2048 mysd.img`
- C. `mksdcard -create -l mysd 2GB mysd.img`
- D. `mksdcard -l mysd 2048MB mysd.img`

Answer: D

QUESTION 9

Which of these is the incorrect explanation of layoutopt?

- A. It is a tool used on the command line and does not have GUI.

- B. It helps optimize application layout and layout hierarchy.
- C. It operates on the layout file.
- D. It can be used as an SDK tool from revision 4 and later.

Answer: D

QUESTION 10

Which of these is the correct explanation of the Android Interface Description Language?

- A. It enables data exchange between different applications.
- B. You cannot use Java primitive types as method parameters.
- C. Multiple methods can be defined in one AIDL file.
- D. It provides an environment for executing script languages.

Answer: C

QUESTION 11

Which of these is the incorrect package which holds classes needed for Android network connections?

- A. java.net
- B. org.apache.http
- C. android.location
- D. android.net

Answer: C

QUESTION 12

The following code is a part of a program which sends a status bar notification. Which is the correct code to put into (1) so that it will automatically cancel the notification after it occurs?

```
01: Notification notification = new Notification(icon, tickerText, when);
02: notification.setLatestEventInfo(context, contentTitle, contentText, contentIntent);
03: _____ (1) _____
04: notificationManager.notify(1, notification);
```

- A. notification.flags |= Notification.FLAG_INSISTENT;
- B. notification.flags |= Notification.FLAG_AUTO_CANCEL;
- C. notification.setFlags(Notification.FLAG_AUTO_CANCEL);
- D. notification.setFlags(Notification.FLAGINSISTENT);

Answer: B

Thank You for Trying Our Product

PassLeader Certification Exam Features:

- ★ More than **99,900** Satisfied Customers Worldwide.
- ★ Average **99.9%** Success Rate.
- ★ **Free Update** to match latest and real exam scenarios.
- ★ **Instant Download** Access! No Setup required.
- ★ Questions & Answers are downloadable in **PDF** format and **VCE** test engine format.
- ★ Multi-Platform capabilities - **Windows, Laptop, Mac, Android, iPhone, iPod, iPad**.
- ★ **100%** Guaranteed Success or **100%** Money Back Guarantee.
- ★ **Fast**, helpful support **24x7**.



View list of all certification exams: <http://www.passleader.com/all-products.html>



10% Discount Coupon Code: STNAR2014