

Exam Code: jn0-531

Exam Name: FWV, Specialist (JNCIS-FWV)

Vendor: Juniper Networks

Version: DEMO

Part: A

1: Which two statements are correct regarding NHTB? (Choose two.)

- A.The NHTB table can be viewed with the command get nhtb.
- B.The NHTB table can be viewed with the command get interface <tunnel interface>.
- C.The NHTB table can be viewed with the command get interface <physical interface>.
- D.NHTB is enabled automatically when multiple VPNs are bound to a single tunnel interface.

Correct Answers: B D

2: Your ScreenOS device has come under a SYN flood attack. In the logs, which severity level would you search to see this event?

- A.Alert
- B.Critical
- C.Warning
- D.Emergency

Correct Answers: D

3: As a member of a VSD group, a device may be in which two states? (Choose two.)

- A.init
- B.backup
- C.inactive
- D.passive

Correct Answers: A B

4: Click the Exhibit button.

After the commands shown in the exhibit were entered, users began reporting network performance problems.

Which command would resolve this problem?

```
SSG_5-> debug flow basic
SSG_5-> get session src-ip 10.35.29.1
alloc 2538/max 4064, alloc failed 0, mcast alloc 0, di alloc failed 0
total reserved 0, free sessions in shared pool 1526
id 4059/s**,vsys 0,flag 00000040/0080/0021,policy 320002,time 10, dip
0 module 0
  if 0(nspflag 800601):10.35.29.1/1026->1.1.1.1/80,6,0010db3f4d01,sess
token 6,vlan 0,tun 0,vsd 0,route 5
  if 3(nspflag 0010):10.35.29.1/1026<-1.1.1.1/80,6,00000000000000,sess
token 8,vlan 0,tun 0,vsd 0,route 0
Total 1 sessions shown
SSG_5-> set ffilter src-ip 10.0.0.0/8
```

- A.undebg all
- B.unset filter
- C.set debug optimize 8192kb
- D.debug flow src-ip 10.35.29.1

Correct Answers: A

5: When enabling RIP over a hub and spoke VPN, what must you configure on the hub device tunnel interface to allow spokes to receive routing updates?

- A.point to multipoint
- B.disable split-horizon
- C.enable demand circuit
- D.enable passive interface

Correct Answers: B

6: Click the Exhibit button.

In the exhibit, what is the address of the multicast receiver?

```
SSG_5->get vrouter trust protocol pim mroute
trust-vr - PIM-SM routing table

-----
Register - R, Connected members - C, Pruned - P, Pending SPT Alert - G
Forward - F, Null - N , Negative Cache - E, Local Receivers - L
SPT - T, Proxy-Register - X, Imported - I, SGRpt state - Y, SSM Range Group - S
Turnaround Router - K
-----

Total PIM-SM mroutes: 2
(*, 234.9.8.42) RP 192.168.20.10 01:54:20/- Flags: LF
Zone : Untrust
Upstream : ethernet1/2 State : Joined
RPF Neighbor : local Expires : -
Downstream :
ethernet2/1 01:54:20/- Join 0.0.0.0 FC
(192.168.10.2/24, 231.2.3.10) 01:56:35/00:00:42 Flags: TLF Register Prune
Zone : Trust
Upstream : ethernet1/1 State : Joined
RPF Neighbor : local Expires : -
Downstream :
ethernet2/1 01:54:20/- Join 234.9.8.42 192.168.20.200 FC
```

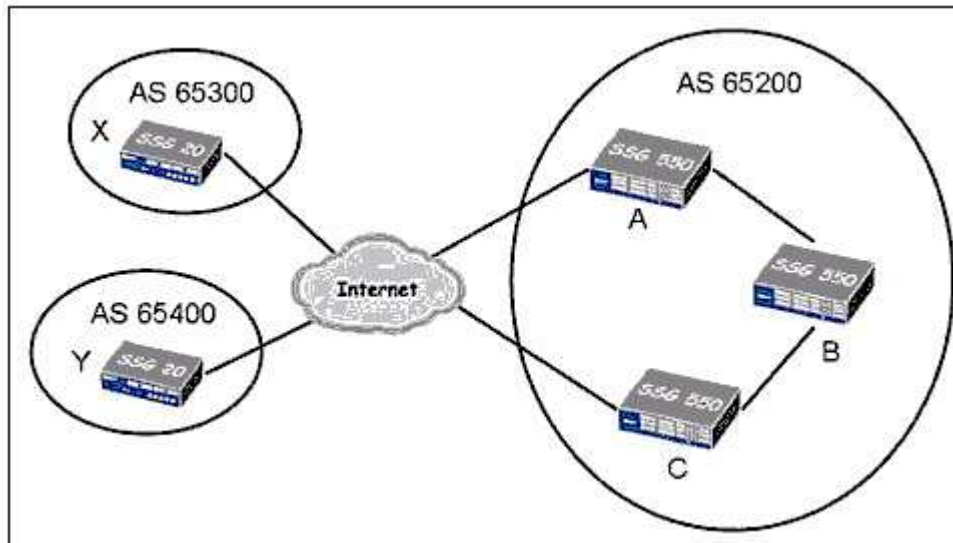
- A.234.9.8.42
- B.192.168.10.2
- C.192.168.20.10
- D.192.168.20.200

Correct Answers: D

7: Click the Exhibit button.

In the exhibit, you need to configure BGP between devices A and C in AS 65200.

Which configuration, if any, will be required only on device B?



- A.No configuration is required on device B.
- B.You need to configure IBGP, defining devices A and C as BGP peers.
- C.You need to enable OSPF and redistribute BGP routes on devices A and C.
- D.You need to configure a policy permitting BGP traffic between device A and device C.

Correct Answers: D

8: Which item in a virtual system is shared by default?

- A.trust zone in the trust-vr
- B.trust zone in the untrust-vr
- C.untrust zone in the trust-vr
- D.untrust zone in the untrust-vr

Correct Answers: C

9: Click the Exhibit button.

Given the routing table in the exhibit, which interface will be used to reach the host at 10.1.20.1?

```

esg550-> get route
C - Connected, S - Static, A - Auto-Exported, I - Imported
iB - IEGP, eB - EBGP, R - RIP, O - OSPF, E1 - OSPF external type 1
E2 - OSPF external type 2

untrust-vr (0 entries)
=====

trust-vr (8 entries)
=====
  ID IP-Prefix      Interface  Gateway      P   Pref   Mtr Vsys
-----
*   9 0.0.0.0/0     eth0/4     1.1.8.254    S   20     1 Root
   8 10.1.20.0/24   tun.1      10.50.1.1    S  150     1 Root
*   7 10.1.20.0/24   eth0/2     10.1.2.254   O   60     1 Root
   2 10.1.20.0/28   tun.21     10.50.1.9    S   20     5 Root
<output omitted>

```

- A.tunnel.1
- B.tunnel.21
- C.ethernet0/2

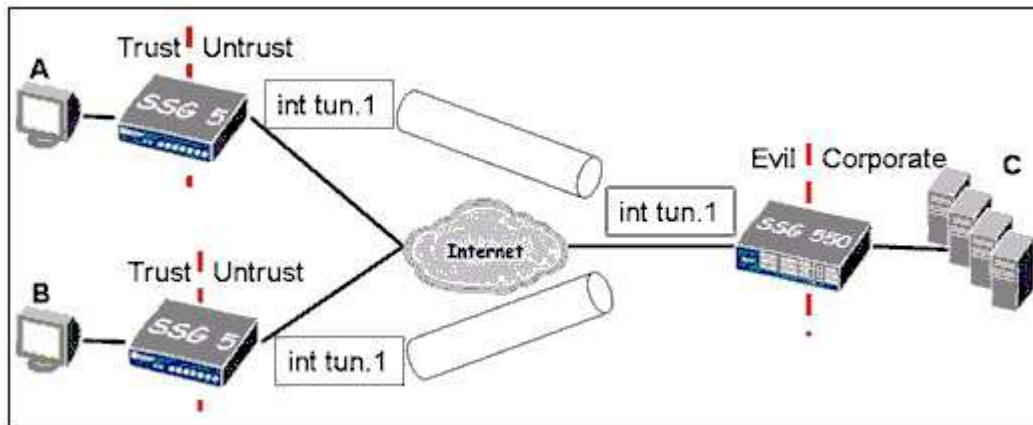
D.ethernet0/4

Correct Answers: C

10: Click the Exhibit button.

In the exhibit, the hub and spoke VPN uses route-based VPNs and has intra-zone blocking enabled on the Evil zone.

What is the minimum number of policy rules required to establish full, bi-directional communications between all locations?



A.3

B.4

C.6

D.7

Correct Answers: D