

Exam Code: 920-533

Exam Name: Carrier VoIP - Communication Server 2000 -
Compact

Vendor: Nortel

Version: DEMO

Part: A

1: In a Carrier VoIP network, what are the two primary functions of the Integrated Element Management System? (Choose two.)

- A.It provides a functional umbrella to manage performance, faults, and security.
- B.It manages connectivity between the Packet Switched Network and TDM trunks.
- C.It manages a message switching function between elements in an SS7 network.
- D.It provides a central launch point to element managers that manage VoIP networks.

Correct Answers: A D

2: In a Carrier VoIP network, which two statements about the STORage Management Integrated Array (STORM-IA) units are true? (Choose two.)

- A.The STORM IA unit participates in call processing.
- B.The STORM-IA unit uses the Network File System services.
- C.The STORM-IA unit operates in a high availability cluster configuration.
- D.The STORM-IA unit provides redundancy for application software and data that is stored on its disk drives.

Correct Answers: B D

3: In a Carrier VoIP network, what is the primary function of the USP Manager?

- A.Manages all Universal Access VoIP network components.
- B.Manages the Universal Switch Provisioning Network Element.
- C.Manages the OAM&P activities for the Universal Signaling Point component.
- D.Manages the Universal Access VoIP signaling and performance Network Element.

Correct Answers: C

4: Which circuit provides connectivity between legacy equipment (i.e., MS) and the CS2000 compact in the Carrier VoIP hybrid solution?

- A.Call Agent
- B.TDM Controller
- C.Shelf Controller
- D.Message Controller

Correct Answers: D

5: In a Carrier VoIP network, which occurs in the event of a complete failure of an active STORage Management Integrated Array (STORM-IA) unit?

- A.The call agent will have access to the remaining operational STORM-IA unit.
- B.The Call Agent will store the data until the failed STORM-IA unit is corrected.
- C.The inactive STORM-IA unit will detect the failure and take over as the active unit.
- D.The call agent will have access to the remaining operational STORM-IA unit, only after NFS mounts are re-established.

Correct Answers: A

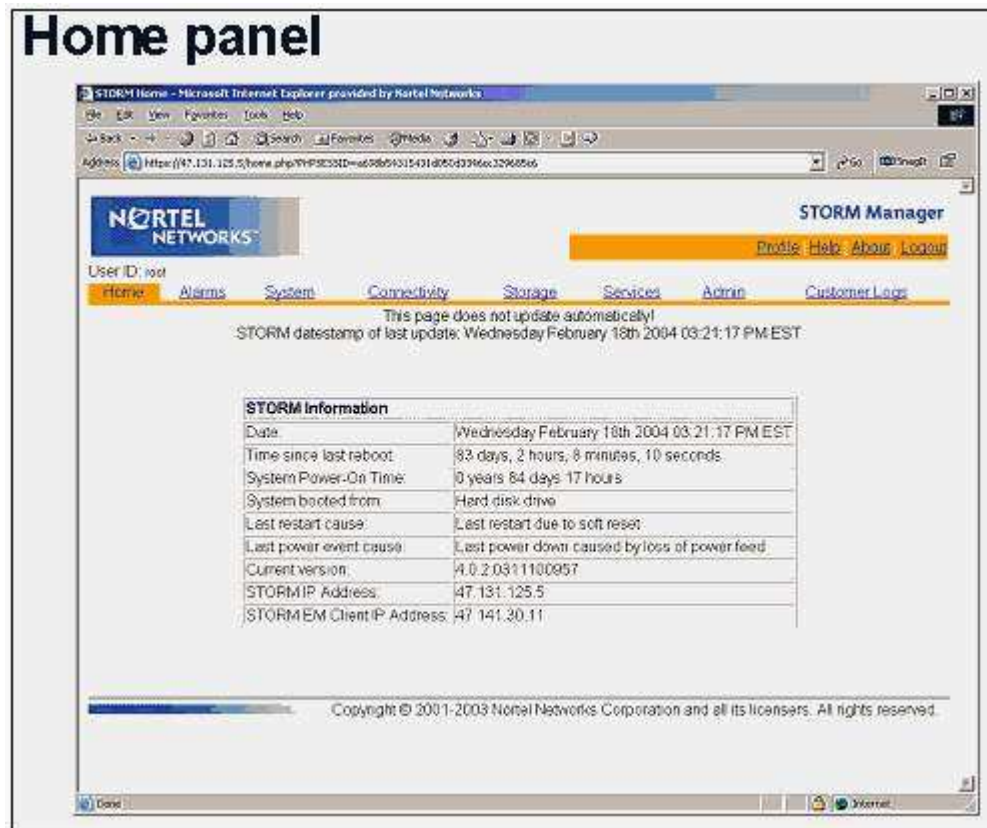
6: Which two cards are part of a Greenfield system configuration? (Choose two.)

- A.the Call Agent
- B.the shelf Agent
- C.the shelf controller
- D.the Message Controller

Correct Answers: A C

7: Click on the Exhibit button.

In the STORM MANAGER, in which panel is the NTP server configured?

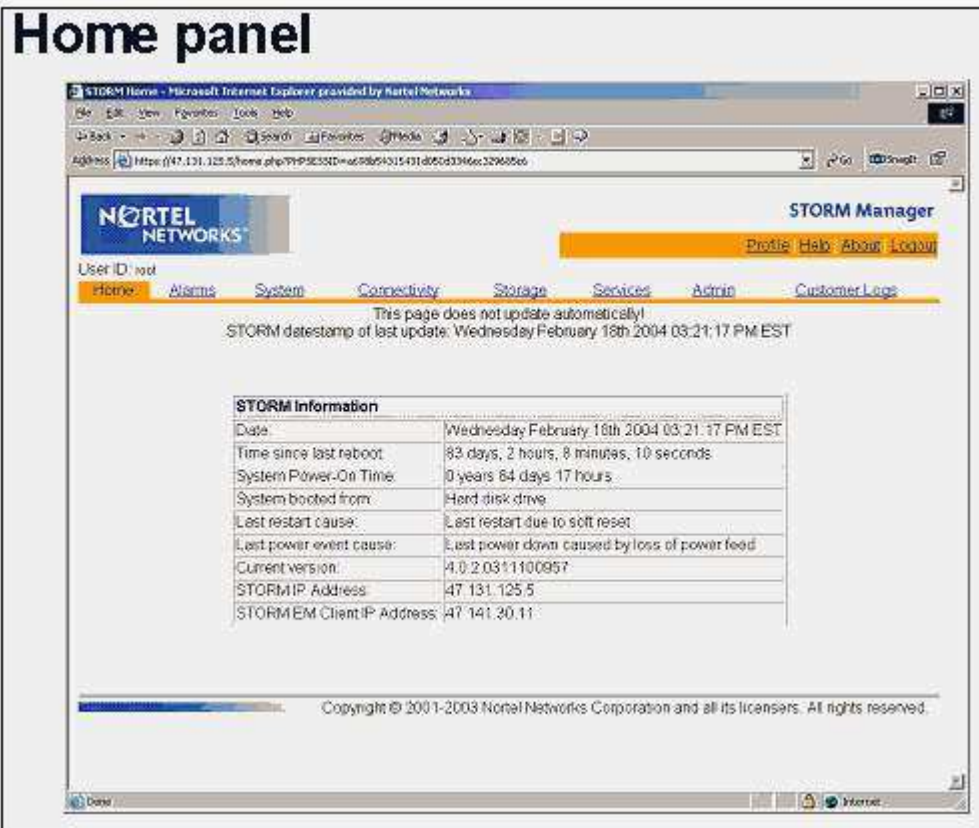


- A.the Admin Panel
- B.the System Panel
- C.the Services Panel
- D.the Connectivity Panel

Correct Answers: C

8: Click on the Exhibit button.

In the STORM MANAGER, which panel would a technician use to view the status of remote hosts?



- A.the Hosts Panel
- B.the Admin Panel
- C.the System Panel
- D.the Connectivity Panel

Correct Answers: D

9: In the Compact Call Agent Maintenance (CCAMTC) tool, which command at the TRANSFER level will change the default directory location for software patches?

- A.FETCH
- B.CHANGE
- C.SOURCE
- D.RETRIEVE

Correct Answers: C

10: In the Compact Call Agent Maintenance (CCAMTC) tool, which command from the CAMTC level, can be used to switch the activity of the Call Agents?

- A.RELJAM
- B.SWACTC
- C.SWACT from the active unit
- D.SWACT from the inactive unit

Correct Answers: C