

Exam Code: 050-704

Exam Name: Novell Open Enterprise Server for Linux + ZENworks

Vendor: NOVELL

Version: 3.00

Part: A

1: By default, the iPrint system uses port _____ to send non-secure print jobs. Answer:
PORT631

Correct Answers:

2: When migrating volumes from a NetWare server to an OES Linux server, which are considerations you should keep in mind? (Choose 2.)

- A.Open files on the source volume won't be migrated, by default.
- B.The creation date of the files on your migrated volume will be reset to the current date.
- C.Linux User Management must be disabled on the destination server before starting the migration.
- D.If the source NetWare volume is part of a server cluster and it fails over during the migration, the Server Consolidation utility can continue the migration process using a redundant server in the cluster.
- E.The file ownership attribute is not preserved when migrating NetWare NSS volumes to OES Linux volumes.
- F.You will lose all trustee rights assignments when migrating a traditional NetWare volumes to OES Linux NSS volumes.

Correct Answers: A B

3: You've just completed an upgrade of a NetWare 5.1 server to OES NetWare. You now need to install additional products. Which utilities can you use to do this? (Choose 2.)

- A.iManager
- B.Remote Manager
- C.Deployment Manager
- D.Novell Application Manager
- E.The Install utility in the OES NetWare server GUI

Correct Answers: C E

4: Your organization's eGuide service is installed on an OES Linux server with a DNS domain name of da12.da.com. You've configured eGuide to use eDirectory as its LDAP directory service. Your users need to access the eGuide service from their workstations using a web browser . What URL should they use to do this? Answer:

HTTP://DA12.DA.COM/EGUIDE

Correct Answers:

5: You're setting up an iFolder server in your network that will service 1800 users. The server uses a dual Pentium 4 CPU motherboard and a 500 GB RAID 3 storage array. The server is connected to workstations through a Gigabit twisted-pair Ethernet network. Does this system meet Novell's recommended design guidelines for iFolder?

- A.Yes, all recommendations are met.

- B.No, iFolder is not multiprocessor-enabled.
- C.No, iFolder does not support RAID 3 storage devices.
- D.No, a single iFolder server should serve a maximum of 1000 users.
- E.No, iFolder should be implemented on a fiber-optic Ethernet network.

Correct Answers: D

6: You're planning the deployment of a new Open Enterprise Server network. You will create a new eDirectory tree with the first OES server you install. Each server in the tree will function in a specified role. You plan to install the following servers:

- . DA1. DA1 will be an OES Linux server that will run NCP Server and contain NSS volumes.
- . DA2. DA2 will be an OES Linux server that will run NCP Server and NSS. It will also be used to create an iSCSI SAN using the other servers in the network.
- . DA3: DA3 will be an OES Linux server that will run NCP Server, NSS, and iFolder.
- . DA4: DA4 will be an OES Linux server that will run NCP Server, NSS, and NetStorage.
- . DA5: DA5 will be an OES Linux server that will run iManager to provide remote management services for the entire network.

Which server should be the first server installed in the eDirectory tree?

- A.DA1
- B.DA2
- C.DA3
- D.DA4
- E.DA5

F.It doesn't matter which OES server is installed first in the eDirectory tree.

Correct Answers: F

7: Which file is used to configure the OpenSSH service on your OES Linux server?

- A./etc/sshd.conf
- B./etc/ssh/sshd.conf
- C./etc/sysconfig/sshd
- D./etc/ssh/sshd_config
- E./etc/rc.d/init.d/sshd

Correct Answers: D

8: Which version of eDirectory is installed by default after a NetWare 5.1 server is upgraded to OES NetWare?

- A.eDirectory 8.9
- B.eDirectory 8.8
- C.eDirectory 8.5.7
- D.eDirectory 8.7.3
- E.eDirectory 8.6.5

Correct Answers: D

9: Click the Point & Click button to begin. You need to configure a Universal Password Policy to allow users connecting to your OES Linux system to authenticate to the Novell Samba service on

the server. Click the iManager category you would use to do this.



Correct Answers:



10: You need to deliver applications to your users and workstations that reside in remote locations outside your organization's firewall. What is required to accomplish this using ZENworks Desktop

Management?

A.Load Nal.nlm with the -N switch.

B.Implement the ZENworks Middle-Tier server.

C.Load Appman.nlm with the -PASSTHROUGH switch.

D.Enable dynamic NAT passthrough on the server where ZENworks is installed.

Correct Answers: B

11: You are implementing NetStorage on an OES Linux server. You need to configure a file access protocol on the server to provide NetStorage users with access to the Linux file system. Which of the following can do this? (Choose 2.)

A.AFP

B.NFS

C.DEC

D.NSS

E.NIS

F.Samba

G.NetBIOS

H.NCP Server

Correct Answers: F H

12: You're implementing iFolder 3.1 on an OES Linux server. The iFolder implementation will service 250 users. It uses a dual Xeon CPU motherboard and a 300 GB SCSI RAID 5 array. The server is connected via fiber-optic network cables to your organization's Ethernet network. Your OES Linux server has eDirectory, NSS, and iManager installed. Can iFolder 3.1 be implemented on this system?

A.No, iFolder 3.1 doesn't support RAID arrays.

B.No, iFolder 3.1 isn't multiprocessor-enabled.

C.No, iFolder 3.1 can't be implemented on OES Linux.

D.No, iFolder 3.1 doesn't support the NSS file system.

E.Yes, this system meets the recommended guidelines.

F.No, iFolder 3.1 on OES Linux should service a maximum of 250 users.

Correct Answers: E

13: You are configuring your OES Linux server to get its time using the NTP protocol from an NTP time provider with an IP address of 10.200.200.1. You've opened /etc/ntp.conf in a text editor. Which directive will configure your server to get its system time from this provider?

A.server 10.200.200.1

B.provider 10.200.200.1

C.ntp-time 10.200.200.1

D.ntp-server 10.200.200.1

E.get-time 10.200.200.1

F.get server time 10.200.200.1

G.set time source=10.200.200.1

Correct Answers: A

14: You have mounted a floppy diskette on your OES Linux server in the /media/floppy directory. Enter the command you would use to dismount the diskette prior to removing it from the system:

_____ Answer:

UMOUNT/DEV/FD0,UMOUNT/MEDIA/FLOPPY

Correct Answers:

15: What is the largest upload file size supported by iFolder 3.x Web Access?

A.1 MB

B.4 MB

C.8 MB

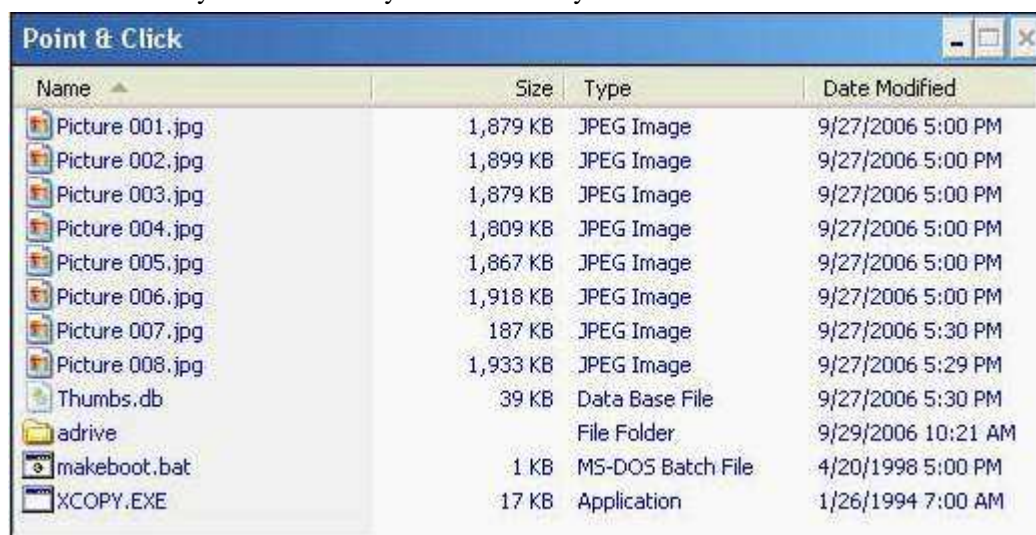
D.10 MB

E.16 MB

FiFolder 3.x Web Access has no upload file size limit.

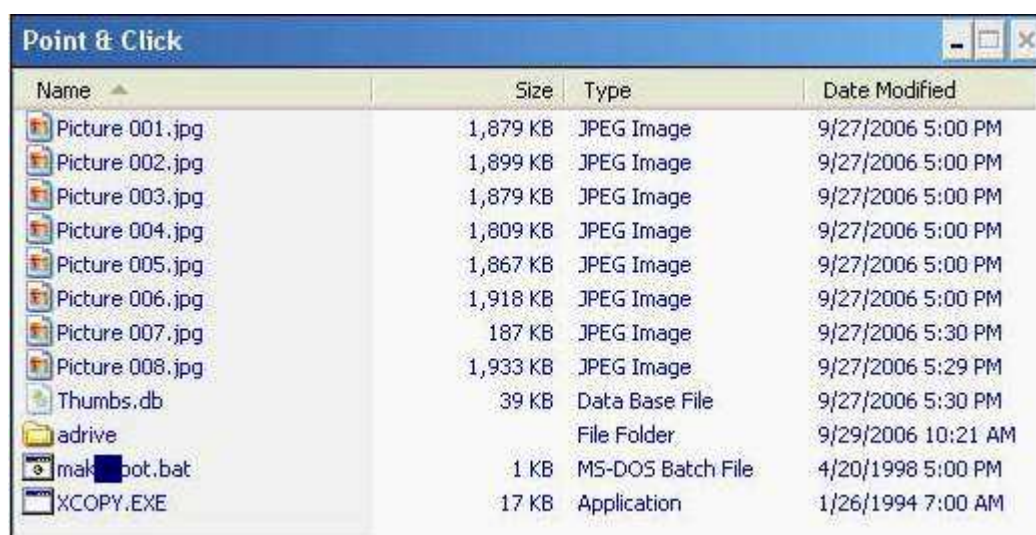
Correct Answers: D

16: Click the Point & Click button to begin. Click on the file or folder in this directory that iFolder will automatically exclude from synchronization by default.



Name	Size	Type	Date Modified
Picture 001.jpg	1,879 KB	JPEG Image	9/27/2006 5:00 PM
Picture 002.jpg	1,899 KB	JPEG Image	9/27/2006 5:00 PM
Picture 003.jpg	1,879 KB	JPEG Image	9/27/2006 5:00 PM
Picture 004.jpg	1,809 KB	JPEG Image	9/27/2006 5:00 PM
Picture 005.jpg	1,867 KB	JPEG Image	9/27/2006 5:00 PM
Picture 006.jpg	1,918 KB	JPEG Image	9/27/2006 5:00 PM
Picture 007.jpg	187 KB	JPEG Image	9/27/2006 5:30 PM
Picture 008.jpg	1,933 KB	JPEG Image	9/27/2006 5:29 PM
Thumbs.db	39 KB	Data Base File	9/27/2006 5:30 PM
adrive		File Folder	9/29/2006 10:21 AM
makeboot.bat	1 KB	MS-DOS Batch File	4/20/1998 5:00 PM
XCOPY.EXE	17 KB	Application	1/26/1994 7:00 AM

Correct Answers:



Name	Size	Type	Date Modified
Picture 001.jpg	1,879 KB	JPEG Image	9/27/2006 5:00 PM
Picture 002.jpg	1,899 KB	JPEG Image	9/27/2006 5:00 PM
Picture 003.jpg	1,879 KB	JPEG Image	9/27/2006 5:00 PM
Picture 004.jpg	1,809 KB	JPEG Image	9/27/2006 5:00 PM
Picture 005.jpg	1,867 KB	JPEG Image	9/27/2006 5:00 PM
Picture 006.jpg	1,918 KB	JPEG Image	9/27/2006 5:00 PM
Picture 007.jpg	187 KB	JPEG Image	9/27/2006 5:30 PM
Picture 008.jpg	1,933 KB	JPEG Image	9/27/2006 5:29 PM
Thumbs.db	39 KB	Data Base File	9/27/2006 5:30 PM
adrive		File Folder	9/29/2006 10:21 AM
makpot.bat	1 KB	MS-DOS Batch File	4/20/1998 5:00 PM
XCOPY.EXE	17 KB	Application	1/26/1994 7:00 AM

17: Click the Point and Click button to begin. You are managing an OES Linux server. You have an application running in a second virtual desktop that you want to use. Click on the icon you would select to switch to the second virtual desktop.



Correct Answers:



18: When configuring a Workstation package, policies are available under 6 categories: General, Windows 9x, Windows NT-2000-XP, Windows NT, Windows 2000, and Windows XP. Which policies can be configured under the General policies category? (Choose 3.)

- A. Novell iPrint
- B. Windows Group
- C. Remote Control
- D. Workstation Imaging
- E. Computer Extensible
- F. Workstation Inventory

Correct Answers: A C D

19: When defining a share in the Novell Samba configuration file, which instruction, is used to specify whether the share will be automatically displayed in My Network Places or Network Neighborhood on a Windows client system?

- A. public = yes
- B. viewable = yes
- C. writable = yes
- D. guest ok = yes
- E. printable = yes
- F. browseable = yes
- G. showashomes = yes
- H. displayonclient = yes

Correct Answers: F

20: You are planning a deployment of an OES Linux server in your network. This server needs to provide the following:

- Automatic host configuration using DHCP.
- NSS volumes.
- Name resolution using DNS.
- Support for Windows workstations using the Client for Microsoft Networks.

Junctions to other NSS volumes in the network using Distributed File Services (DFS).

Can this be done?

A.No, OES Linux doesn't support DFS.

B.No, OES Linux doesn't support NSS volumes.

C.No, OES Linux doesn't provide DNS services.

D.No, OES Linux doesn't provide DHCP services.

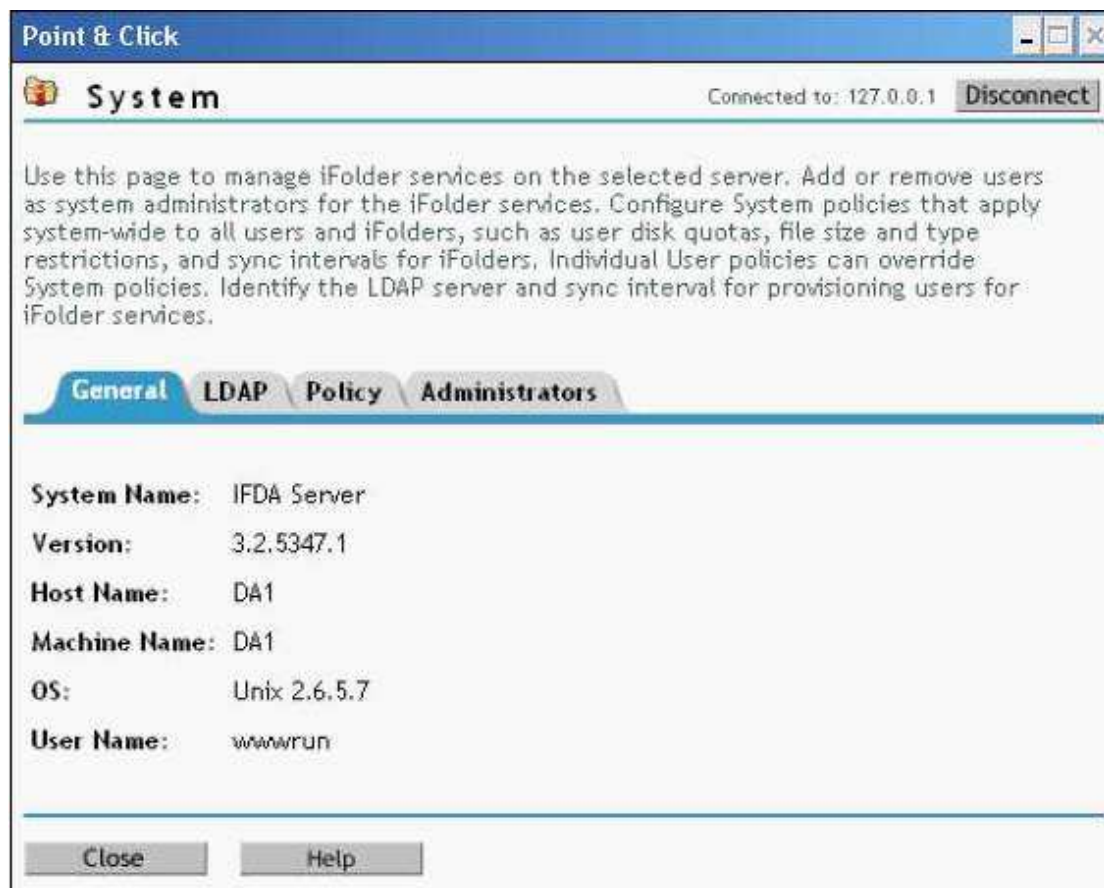
E.Yes, these services can be configured on OES Linux.

F.No, OES Linux doesn't support Windows workstations using the Client for Microsoft Networks.

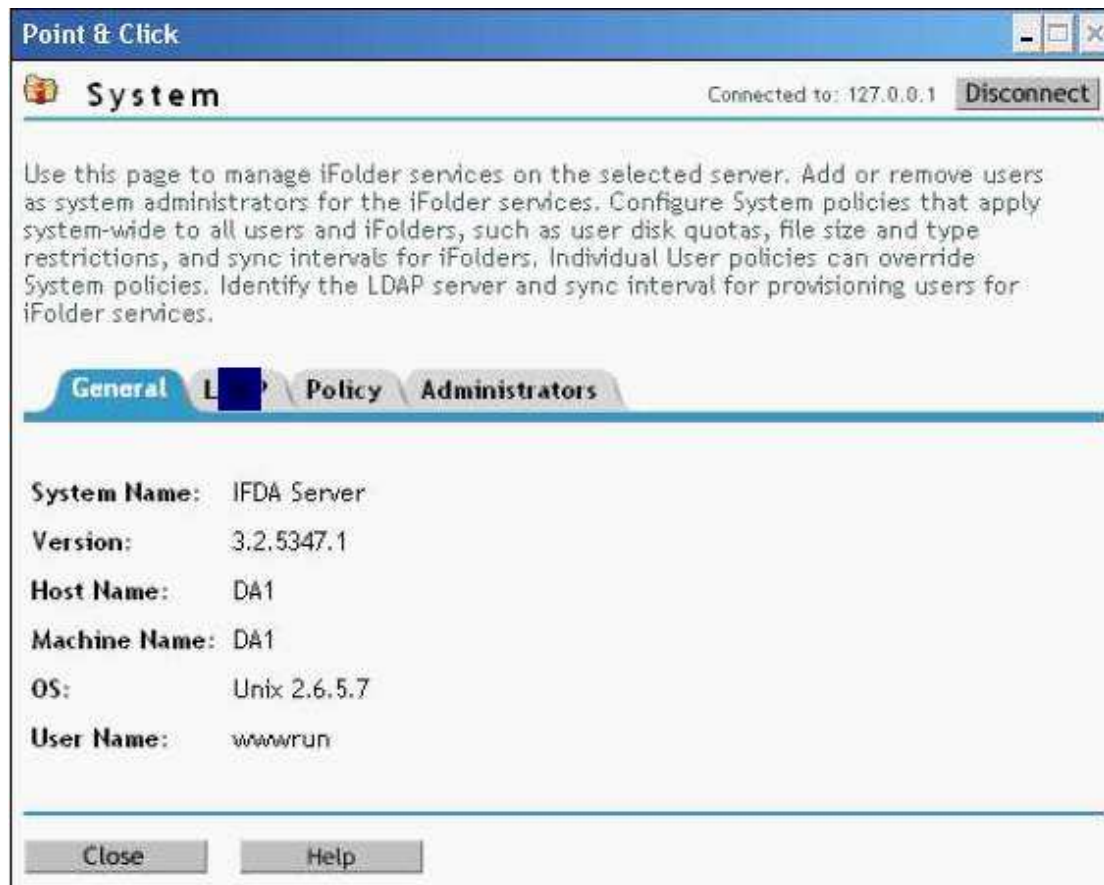
Correct Answers: A

21: Click the Point & Click button to begin.

You've installed iFolder on your OES Linux server. You now need to provision iFolder with users from your eDirectory tree. Click the option in iManager you would use to configure iFolder to query your eDirectory tree and retrieve the users you specified when you configured your Search DNs.



Correct Answers:



22: You're responsible for managing an OES NetWare server. Your server has two NSS volumes and two NSS pools. The SYS volume resides in the SYS pool. The DATA volume resides in the DATA_POOL pool. The DATA_POOL pool is 800 GB in size. The DATA volume is 500 GB in size. You want to create two more volumes: ?

APPS

ARCHIVE

Each of these volumes must be 300 GB in size. You want to add these two volumes to the DATA_POOL pool. Can you do this?

- A.No, you can't implement more than two volumes in a single pool.
- B.No, the combined size of the volumes exceeds the size of the pool.
- C.Yes, the combined size of the volumes can exceed the size of the pool.
- D.No, the combined size of all the volumes in a single pool can't exceed 1 TB.
- E.No, the performance of the system will be dramatically impacted by adding additional volumes to the same pool.

Correct Answers: C

23: You are working with a customer who wants to implement OES NetWare in her network. Users will connect to the network using Windows XP workstations running the Novell Client. She needs the OES NetWare servers to provide network printing and distributed storage. In addition, the servers must automatically keep older versions of any user file that is deleted or modified in any way. Which services should be configured on the server to accomplish this? (Choose 3.)

- A.DFS
- B.CIFS
- C.iSCSI
- D.MySQL
- E.iPrint
- F.eGuide
- G.Identity Manager
- H.File Edition Manager
- I.Novell Cluster Services
- J.Archive and Version Services

Correct Answers: A E J

24: You're using the iFolder 3.1 Client on a Windows XP workstation. In Windows Explorer, you right-click on an iFolder and then select Delete. When you do this, the iFolder and its contents are deleted from the iFolder server. What access right did your user account have to the iFolder?

- A.Owner
- B.Manager
- C.Read Only
- D.Read/Write
- E.Full Control
- F.Administrator

Correct Answers: A

25: You've installed iFolder on an OES Linux server in your network. You've made some changes to the service and need to restart it. Which shell command will stop the iFolder service?

- A.rcapache2 stop
- B.rcifolderd stop
- C.rcifolder-3d stop
- D.rcnovell-ifolder stop
- E.rcapache2 -ifolder stop

Correct Answers: A

26: You need to migrate a Traditional NetWare File System volume from a SCSI hard disk on an existing NetWare 6.5 server to a RAID 0+1 array on an OES Linux server. The OES Linux server has eDirectory, NCP Server, NSS, LUM, and Storage Management Services (SMS) configured and running. You've installed the NFS name space on the traditional NetWare volumes. Can you use the Server Consolidation Utility to complete the migration?

- A.Yes, all the prerequisites are met.
- B.No, you must remove the NFS name space from the traditional volume.
- C.No, you must first disable LUM on the destination OES Linux server.
- D.No, you can't migrate volumes from a SCSI hard disk to a RAID array.
- E.No, you can't migrate volumes to a RAID 0+1 array. NSS only supports migration to RAID 5 arrays.

Correct Answers: A

27: Click the Point & Click button to begin.

You want to configure NSS on your OES Linux server. Click the option in YaST you would use to do this.



Correct Answers:



28: Click the Point and Click button to begin. Click the icon in the Kicker you would select to use the KDE Desktop to shut the OES Linux system down.



Correct Answers:



29: Click the Point & Click button to begin. You need to LUM-enable eDirectory users and groups in your existing eDirectory tree. Click on the category in iManager you use to do this.



Correct Answers:



30: You are working with a customer who wants to implement Novell Open Enterprise Server-Linux (OES Linux) in her network. She needs the OES Linux servers to authenticate users from Windows XP client systems using the Novell Client, to provide network printing, to provide network storage of user files, and to support a Storage Area Network (SAN) using off-the-shelf Ethernet hardware. Which services should be configured on the server to accomplish this? (Choose 2.)

- A.AFP
- B.NFS
- C.FCIP
- D.iSCSI
- E.Tomcat
- F.EtherSAN
- G.NetStore
- H.NCP Server
- I.PostgreSQL
- J.Novell Cluster Services

Correct Answers: D H

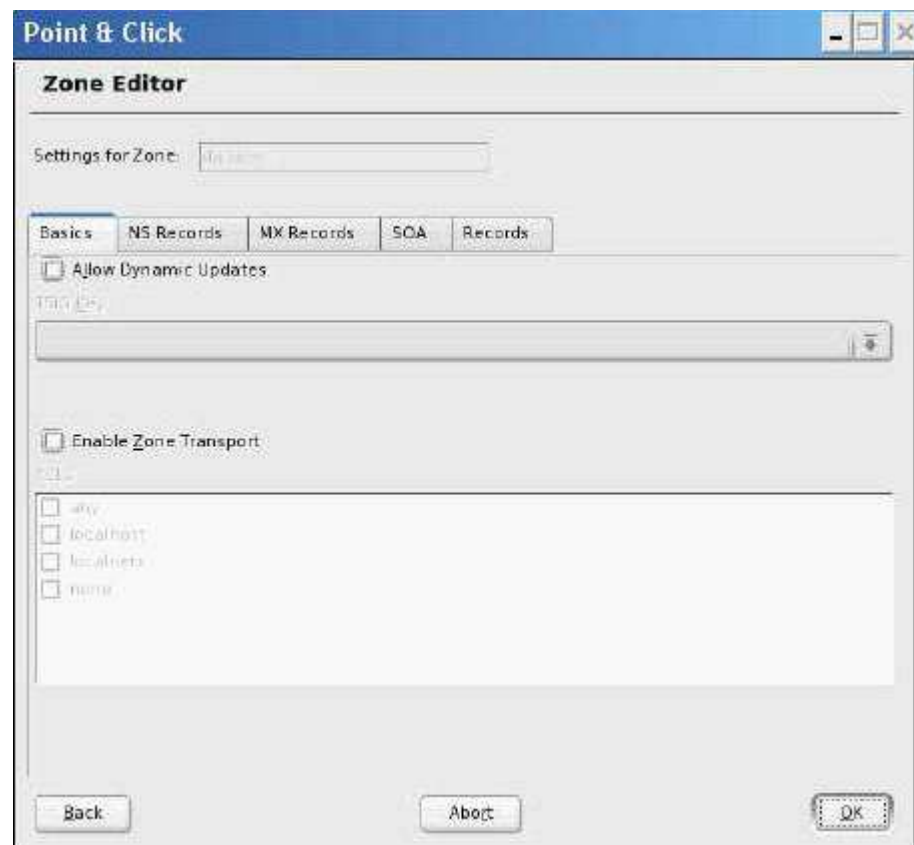
31: In which directory is the configuration file for your iPrint Print Manager stored on an OES Linux server?

- A./etc/iprint
- B./etc/opt/iprint
- C./etc/iprint/ndpsm
- D./etc/novell/iprint

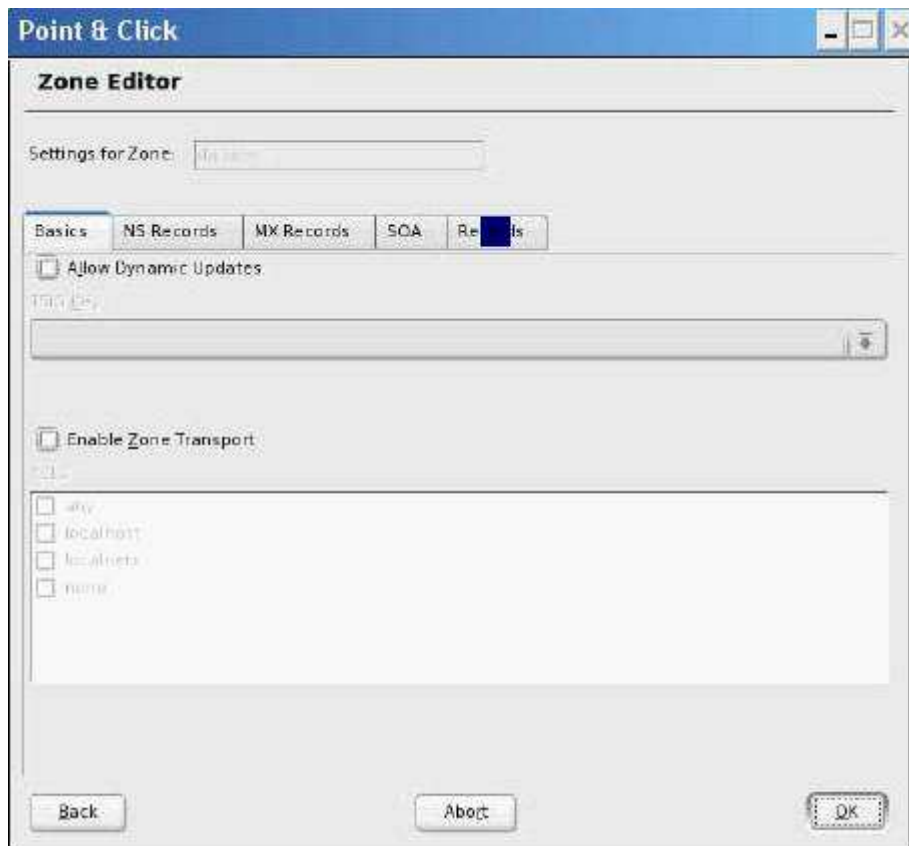
E./etc/opt/novell/iprint
F./etc/novell/oes/iprint
G./etc/opt/novell/ndpsm

Correct Answers: E

32: Click the Point & Click button to begin. You've just added a new OES Linux server to your organization's network. You've assigned this server an IP address of 10.200.200.3 and a hostname of DA3. You now need to add this server to your DNS zone (da.com) using the DNS service running on an existing OES Linux server in your network. You've started YaST on this server and accessed the DNS Server task. Click on the option you would select to add the new server to your zone.



Correct Answers:



33: You are preparing to use the Server Consolidation Utility to migrate volumes from an existing NetWare 6.5 server to an OES Linux server. You need to enable SMS on the source NetWare server. Which NLMs do you need to load? (Choose 2.)

- A.SCU.NLM
- B.SMS.NLM
- C.SMDR.NLM
- D.TSAFS.NLM
- E.NSSTSA.NLM
- F.LINUXTSA.NLM
- G.MIGRATE.NLM

Correct Answers: C D

34: In addition to using the Hosts file or a DNS A record, you can also use registry data to enable workstations to locate the Import server in your network. Which registry key does this?

- A.HKEY_CURRENT_USER\Software\Novell\ZENworks\zwsreg
- B.HKEY_LOCAL_MACHINE\Software\Novell\ZENworks\zwsreg
- C.HKEY_CURRENT_USER\Software\Novell\ZENworks\zenwsreg
- D.HKEY_CURRENT_CONFIG\Software\Novell\ZENworks\zwsreg
- E.HKEY_LOCAL_MACHINE\Software\Novell\ZENworks\zenwsreg
- F.HKEY_CURRENT_CONFIG\Software\Novell\ZENworks\zenwsreg

Correct Answers: E

35: You've authenticated to your OES Linux server as your jcorry user. You now need to perform

an administrative task that jccorrey is not allowed to do. What command can you enter at a shell prompt to change to your root user account without logging out? (Choose 2.)

- A.su -
- B.login
- C.sux -
- D.chroot -
- E.user -root
- F.switchusr -
- G.chuser -root

Correct Answers: A C

36: When Windows users access the CIFS service running on an OES NetWare server and supply their username, the CIFS service reads a configuration file and searches through each eDirectory context listed in the file until it finds the corresponding user object in the tree. Which configuration file is used to do this?

- A.Sys:\Etc\Cifs.cfg
- B.Sys:\Etc\Ctxs.cfg
- C.Sys:\Etc\Samba.cfg
- D.Sys:\Etc\Cifsctx.cfg
- E.Sys:\Etc\Smb-contexts.cfg
- F.Sys:\Etc\Cifs-contexts.cfg

Correct Answers: D

37: You've just installed and configured the BIND service on your OES Linux system. You've created a zone for the da.com domain and created an A record for your DA1 server. You now need to use the dig utility to test whether or not your DNS server can resolve names into IP addresses. Enter the command you would use from shell prompt to do this:

_____ Answer:

DIGDA1.DA.COM

Correct Answers:

38: Which file system rights should users have to the Personality Migration Template Store directory on your NetWare server? (Choose 2.)

- A.Read
- B.Erase
- C.Write
- D.Create
- E.Modify
- F.File Scan
- G.Access Control

Correct Answers: A F

39: An iFolder 3.1 Client is available for which of the following operating systems? (Choose 2.)

- A.AIX

- B. HP-UX
- C. MS-DOS
- D. Solaris
- E. Mac OS X
- F. Windows XP
- G. Red Hat Linux

Correct Answers: E F

40: Which command can be used from the shell prompt on a Linux workstation to configure a user account to allow driver downloads from your iPrint system?

- A. chown
- B. chmod
- C. useradd
- D. chgroup
- E. lppasswd
- F. smbpasswd

Correct Answers: E

41: Which volume management system must be used if you're installing OES Linux on a single drive system and you plan use NSS?

- A. Linux Volume Manager
- B. Logical Volume Manager
- C. Logical Volume Manager 2
- D. Extended Volume Management System
- E. Enterprise Volume Management System

Correct Answers: E

42: A customer currently has three Windows Server 2003 servers in her network that host an Active Directory tree. She wants to integrate OES Linux and eDirectory into the network. Which statement is true?

- A. The Active Directory tree can be imported into an eDirectory tree hosted by an OES Linux server.
- B. The OES Linux server running eDirectory can be imported directly into the Active Directory tree.
- C. Active Directory is incompatible with OES Linux and can not be configured to work with an eDirectory tree. The Windows servers must be removed to implement OES Linux.
- D. The existing Windows servers must be migrated to OES NetWare before installing an OES Linux server into the network.
- E. Identity Manager Bundle Edition can be used to synchronize information between the Active Directory tree and an eDirectory tree hosted by an OES Linux server.

Correct Answers: E

43: You are implementing an OES Linux system and want to use NSS to manage the file system.

Your server has a 500 GB SCSI RAID 5 array. You want this array to host the swap partition, the root partition (/), your /boot partition, and your NSS volumes. You're using the Linux Volume Manager for volume management. Will this configuration work?

- A. Yes, this configuration will work correctly.
- B. No, NSS doesn't support hardware RAID 5 arrays.
- C. No, NSS doesn't support SCSI hard disk interfaces.
- D. No, you can't place the swap partition on the same hard disk as your NSS volumes if you're using a RAID device.
- E. No, you can't use LVM if the swap partition and /boot partition reside on the same device as your NSS volumes.

Correct Answers: E

44: Which object can you associate with a workstation package? (Choose 2.)

- A. User
- B. Alias
- C. Printer
- D. Profile
- E. Security
- F. Computer
- G. Container
- H. Workstation Group

Correct Answers: G H

45: In preparation for migrating workstation personalities using ZENworks, you've created a Personality Store on your NetWare server's VOL1 volume. Personalities will be stored in VOL1:\Ddna\Data. Your users reside within several different containers within the O=DA container, so you've granted O=DA Read, Create, Write, and File Scan rights to VOL1:\Ddna\Data. You've created an application object to collect workstation personalities when users login to the tree. However, when your users do this, the DNA engine won't run on user's workstations. Your users use Windows 2000 Professional systems with Internet Explorer 5.5 installed. What's causing the problem?

- A. The Personality Store must reside on the server's SYS volume.
- B. The Personality Store must reside at the root of a server volume.
- C. Personality Migration isn't compatible with Windows 2000 systems.
- D. Personality Migration doesn't support trees where users reside in dispersed contexts.
- E. Workstations need to have either Internet Explorer 6 or Microsoft XML Parser 3 installed.
- F. Users need the Erase right to the Personality Store in addition to the rights already granted.

Correct Answers: E

46: You've recently implemented a new eDirectory tree in your network using Open Enterprise Server. You installed server DA2 first in the tree. You then installed DA1, DA3, DA4, and DA5 in that order. You've partitioned the tree and placed replicas on various servers in your tree. You've configured DA1 with a master replica of the root partition of the tree. DA2 and DA3 each have a Read/Write replica of the root partition. DA4 and DA5 each have Master replicas of child

partitions of the root partition created at the OU container level in the tree. Which server hosts the Certificate Authority (CA) for your tree?

- A.DA1
- B.DA2
- C.DA3
- D.DA4
- E.DA5

Correct Answers: B

47: In ZENworks Desktop Management, users are provided access to directory-enabled application through which means? (Choose 2.)

- A.Application Query
- B.Application Reader
- C.Application Loader
- D.Application Browser
- E.Application Explorer
- F.Application Executor

Correct Answers: D E

48: You're currently managing an OES Linux server from the shell prompt. You need to access YaST to configure software installed on the system. What command can you use to do this? (Choose 2.)

- A.yast
- B.YaST
- C.yast2
- D.yast -install
- E.yast -software
- F.YaST -software

Correct Answers: A C

49: You need to access the eGuide Administration Utility on your OES Linux server using a web browser to manage your organization's eGuide service. Assuming your server's IP address is 10.200.200.22; what URL should you use to do this?

- A.http://10.200.200.22/eGuide
- B.http://10.200.200.22/admin:8080/index.html
- C.http://10.200.200.22/eGuide/admin/index.html
- D.http://10.200.200.22/admin:8080/admin/index.html
- E.http://10.200.200.22:2200/eGuide/admin/index.html

Correct Answers: C

50: You're working with a customer who wants to upgrade his NetWare 5.1 servers to OES NetWare. His servers have Support Pack 5 installed and are running eDirectory 8.6. The servers use dual Pentium 4 CPUs and have 2 GB of RAM installed. Can he upgrade these servers to OES NetWare?

- A. Yes, the servers meet the prerequisites for upgrading to OES NetWare.
- B. No, OES NetWare doesn't support upgrades on systems with more than one CPU.
- C. No, the server must have at least 4 GB of RAM to complete the upgrade to OES NetWare.
- D. Yes, but you must disable the second CPU until the upgrade to OES NetWare is complete.
- E. Yes, but you must run Deployment Manager on the servers before upgrading to OES NetWare.
- F. No, the servers must be running eDirectory 8.7.5 or later to be upgraded to OES NetWare.
- G. No, the servers must have Support Pack 6 or later applied before upgrading to OES NetWare.

Correct Answers: G

51: Which utilities can you use to LUM-enable eDirectory users on an OES Linux server? (Choose 2.)

- A. YaST
- B. iManager
- C. iMonitor
- D. ndsconfig
- E. nambulkadd
- F. Remote Manager

Correct Answers: B E

52: You are responsible for managing an OES Linux server that uses NSS volumes. You've created an NSS volume named IFOLDER that is mounted at /var/nss/ifolder that is used for your iFolder service. Because you're using an NSS volume to provide storage for iFolder, you must manually configure rights for the iFolder service agent. Which object in your eDirectory tree is used by iFolder to access the file system?

- A. NSS_SA
- B. novlifdr
- C. ifolderSA
- D. SA_ifolder
- E. LUM-iFolderUser
- F. ifolderserviceagent

Correct Answers: B

53: You've accessed the NetStorage service running on your OES Linux server using a web browser. You notice that the Folder list in the left frame displays a directory named Shared. If you were to upload files to Shared, where would they be saved in the OES Linux server's file system?

- A. /var/shared
- B. /home/shared
- C. /mnt/netstorage/shared
- D. /var/opt/novell/shared
- E. /home/netstorage/shared
- F. /var/opt/netstorage/shared
- G. /var/opt/novell/netstorage/shared

Correct Answers: G

54: Which NLM enables an OES NetWare server to provide file and printer sharing using the Server Message Block protocol on TCP/IP?

- A.SBM.NLM
- B.CIFS.NLM
- C.SAMBA.NLM
- D.SMBTCP.NLM
- E.CIFSTCP.NLM
- F.CIFSINIT.NLM

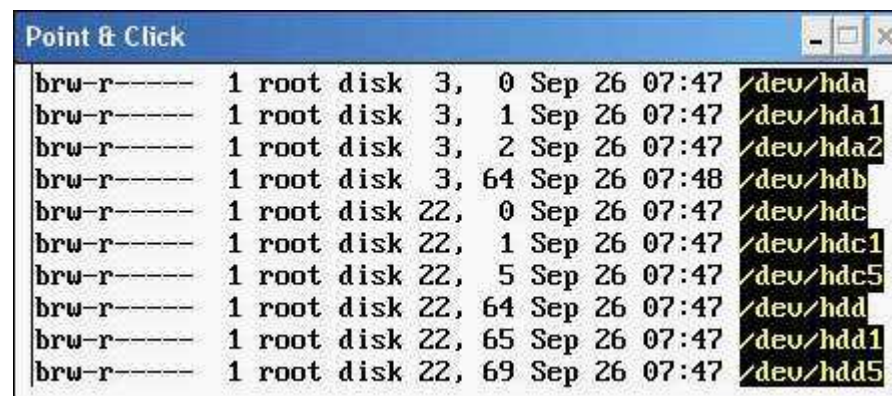
Correct Answers: B

55: You're managing an iPrint system on an OES Linux server. You need to stop the Print Manager on your server. Which command can you enter from the shell prompt to do this?

- A./etc/init.d/ndpsmd stop
- B./etc/init.d/iprintmgr stop
- C./etc/init.d/novell-ipsmd stop
- D./etc/init.d/novell-ndpsmd stop
- E./etc/init.d/novell-iprintmgr stop

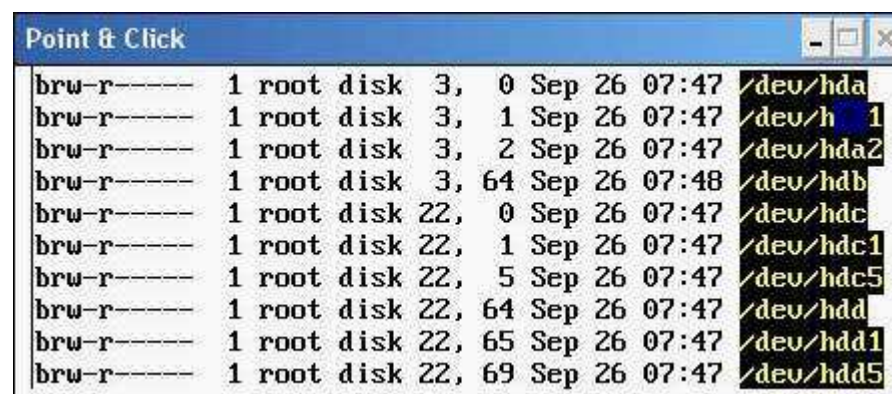
Correct Answers: C

56: Click the Point & Click button to begin. Click on the device below that represents the first partition on the first IDE hard drive in an OES Linux server.



Point & Click									
brw-r-----	1	root	disk	3,	0	Sep	26	07:47	/dev/hda
brw-r-----	1	root	disk	3,	1	Sep	26	07:47	/dev/hda1
brw-r-----	1	root	disk	3,	2	Sep	26	07:47	/dev/hda2
brw-r-----	1	root	disk	3,	64	Sep	26	07:48	/dev/hdb
brw-r-----	1	root	disk	22,	0	Sep	26	07:47	/dev/hdc
brw-r-----	1	root	disk	22,	1	Sep	26	07:47	/dev/hdc1
brw-r-----	1	root	disk	22,	5	Sep	26	07:47	/dev/hdc5
brw-r-----	1	root	disk	22,	64	Sep	26	07:47	/dev/hdd
brw-r-----	1	root	disk	22,	65	Sep	26	07:47	/dev/hdd1
brw-r-----	1	root	disk	22,	69	Sep	26	07:47	/dev/hdd5

Correct Answers:



Point & Click									
brw-r-----	1	root	disk	3,	0	Sep	26	07:47	/dev/hda
brw-r-----	1	root	disk	3,	1	Sep	26	07:47	/dev/h 1
brw-r-----	1	root	disk	3,	2	Sep	26	07:47	/dev/hda2
brw-r-----	1	root	disk	3,	64	Sep	26	07:48	/dev/hdb
brw-r-----	1	root	disk	22,	0	Sep	26	07:47	/dev/hdc
brw-r-----	1	root	disk	22,	1	Sep	26	07:47	/dev/hdc1
brw-r-----	1	root	disk	22,	5	Sep	26	07:47	/dev/hdc5
brw-r-----	1	root	disk	22,	64	Sep	26	07:47	/dev/hdd
brw-r-----	1	root	disk	22,	65	Sep	26	07:47	/dev/hdd1
brw-r-----	1	root	disk	22,	69	Sep	26	07:47	/dev/hdd5

57: Select Point and Click to begin. You need the OES version of Samba on your OES Linux server. Click on the menu in YaST that you would use to install and configure this package.



Correct Answers:



58: You have implemented an OES Linux server and have installed NCP server. You want to use the `ncpcon` utility to create an NCP volume named `HOME` that points to the `/home` directory on your server. Assuming you've already loaded `ncpcon` at a shell prompt, which is the correct command to enter?

- A.new volume HOME /home
- B.add volume HOME /home
- C.new volume HOME=/home
- D.create volume HOME /home
- E.add new volume HOME /home
- F.create ncp volume HOME /home

Correct Answers: D

59: You've just upgraded a NetWare 5.1 server to Novell Open Enterprise Server-NetWare (OES NetWare). Prior to the upgrade, the server had been configured with two NSS volumes (DATA and APPS). What command should you enter at the console of the server after the upgrade to update these NSS volumes?

- A. nss /upgrade=all
- B. volupgrd=DATA,APPS
- C. upgrade nss volumes
- D. nss /zlssvolumeupgrade=all
- E. nss /legacyvolumeupgrade=DATA,APPS

Correct Answers: D

60: Which file systems types are supported by OES NetWare server volumes? (Choose 2.)

- A. NSS
- B. Ext3
- C. Ext2
- D. NTFS
- E. Reiser
- F. Traditional NetWare File System

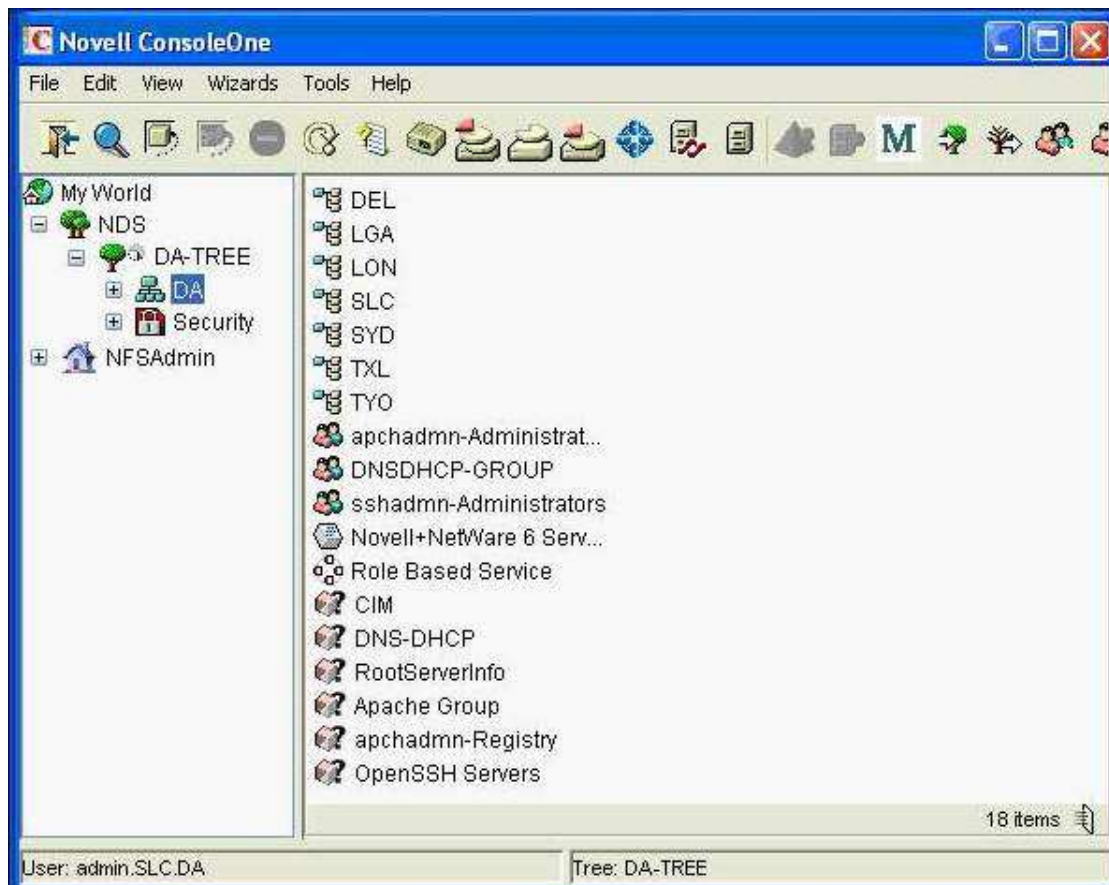
Correct Answers: A F

61: You need to connect from a workstation to your iPrint server using a web browser to install a printer in your organization. If your Print Manager's name is iPrintMgr.SLC.DA and the DNS name of your iPrint server is iprint.da.com, what URL would you use in your browser's location or address field?

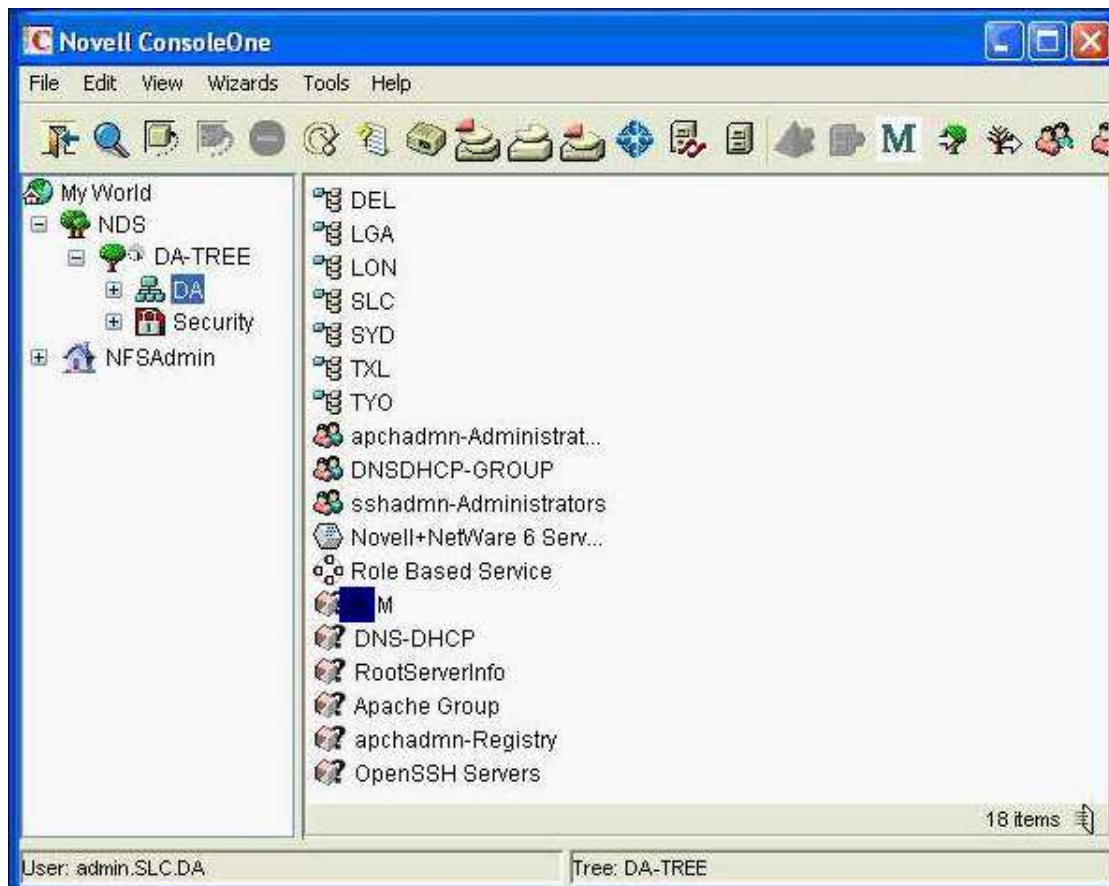
- A. http://iprint.da.com/ipp
- B. http://iprint.da.com/iprint
- C. http://iprint.da.com:/iPrintMgr.SLC.DA
- D. http://iprint.da.com/ipp:iPrintMgr.SLC.DA
- E. http://iprint.da.com/iprint:iPrintMgr.SLC.DA

Correct Answers: A

62: Click the Point & Click button to begin. Click the object in the eDirectory tree that is used to store Health Monitoring Services information.



Correct Answers:



63: You've installed and configured Samba on your Novell OES Linux server. You've also configured several shared directories and a shared printer. You now need to configure your Windows XP workstations to connect to the Samba service. Which network client do you need to install?

- A.Samba Client
- B.Novell Client
- C.Client for UNIX Networks
- D.Line Printer Daemon Client
- E.Network File System Client
- F.Client for Microsoft Networks
- G.Gateway and Client Services for NetWare
- H.No client is needed; Windows XP can communicate with Samba natively.

Correct Answers: F

64: You're working with a customer who is upgrading his NetWare 6.5 server to OES NetWare. The customer previously purchased upgrade protection for his server. Will he be required to purchase new user licenses for OES NetWare?

- A.No, he does not need to purchase new licenses.
- B.Yes, he must purchase new OES NetWare licenses.
- C.He must purchase a new key file (*.NFK), but his existing license file (*.NLF) will continue to work with OES NetWare.
- D.He must purchase a new license file (*.NLF), but his existing key file (*.NFK) will continue to work with OES NetWare.

Correct Answers: A

65: Your iPrint system is currently installed on a NetWare 6.5 server in your network. Your server (DA1) resides in .IS.SLC.DA in the DA-TREE eDirectory tree. Your Print Manager also resides in .IS.SLC.DA. Your Print Manager supports three Printer Agents. Each Printer Agent represents a department printer. The Printer Agents are installed in CUSTSVC.SLC.DA, FLIGHTOPS.SLC.DA, MARKETING.SLC.DA, and RESERVATIONS.SLC.DA. You have recently installed a new OES Linux server named DA2 in .GNOC.SLC.DA.

You want to migrate your iPrint printing from your NetWare server to your new OES Linux server. If you do this, what will happen to your original iPrint objects after the migration is complete?

- A.They will be moved to the same context as the NetWare server and deactivated.
- B.They will be deleted. New iPrint objects will be created in the new container.
- C.They will be moved to .GNOC.SLC.DA. The original objects will no longer exist.
- D.They will be copied to .GNOC.SLC.DA. The original objects will remain in the tree in the original container.

Correct Answers: D

66: Which policy in the user policy package is used to create a user account on a Windows NT, 2000, or XP workstation when a user authenticates to eDirectory?

- A.Local User policy
- B.Windows Group policy

- C. User Extensible policy
- D. Dynamic Local User policy
- E. Windows Local User policy
- F. Workstation Preferences policy

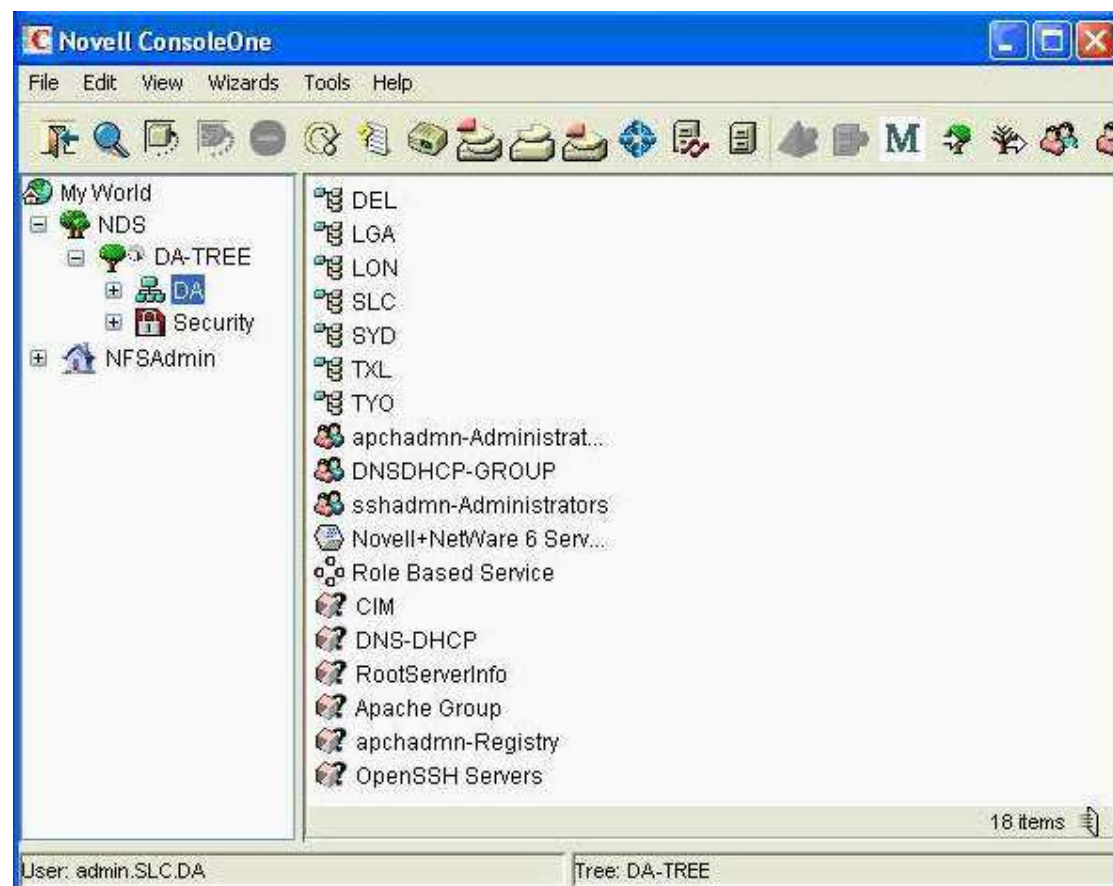
Correct Answers: D

67: Which iPrint component is represented by an object in the eDirectory tree and provides a platform for printer agents on the server?

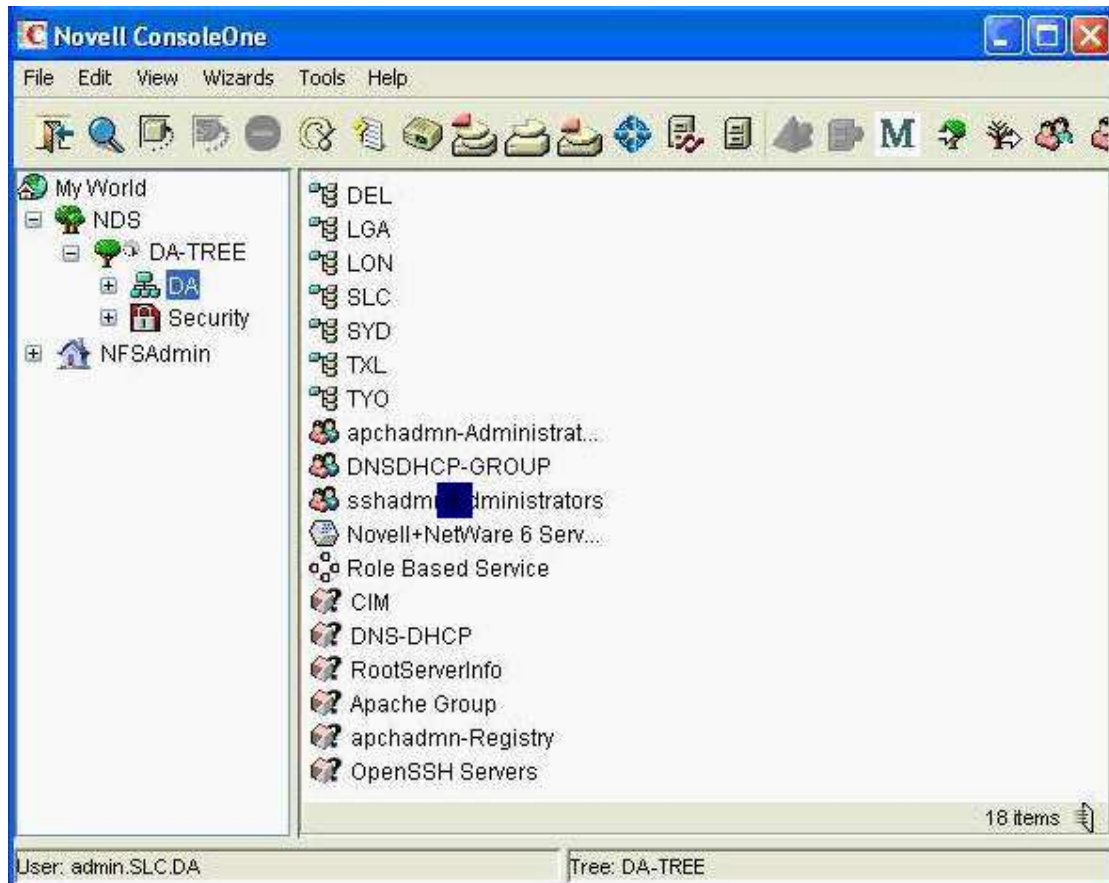
- A. IPP Server
- B. Driver Store
- C. Print Manager
- D. iPrint Client
- E. iPrint Gateway

Correct Answers: C

68: Click Point & Click to begin. Click the object in the eDirectory tree that is used to grant access to the OpenSSH Manager utility on an OES NetWare server.



Correct Answers:



69: You're working with a customer who wants to upgrade his NetWare 5 servers to Novell Open Enterprise Server-NetWare (OES NetWare). His servers have Support Pack 6a installed. The servers use dual Intel Xeon CPUs and have 1 GB of RAM installed. Can he upgrade these servers to OES NetWare?

- A.Yes, the servers meet the prerequisites for upgrading to OES NetWare.
- B.No, OES NetWare doesn't support upgrades on servers using Xeon CPUs.
- C.No, OES NetWare doesn't support upgrades on systems with more than one CPU.
- D.No, the server must have at least 2 GB of RAM to complete the upgrade to OES NetWare.
- E.No, the servers must have Support Pack 7 or later applied before upgrading to OES NetWare.
- F.No, the servers must first be upgraded to NetWare 5.1 or later to be upgraded to OES NetWare.

Correct Answers: F

70: You've just installed the BIND package on your OES Linux server. You now need to modify your zone files for your organization's DNS domain. Assuming that your system uses default parameters, where will these files be located on your server?

- A./etc/dnsd
- B./var/dnsd
- C./etc/bind
- D./etc/named
- E./var/named
- F./var/lib/bind
- G./var/lib/named

Correct Answers: G

71: You are planning a deployment of an OES Linux server in your network. This server needs to provide the following:

- Logins from Windows workstations running the Novell Client with NCP Server.
- NSS volumes.
- Storage area networks (SANs) using iSCSI.
- Remote management using iManager.
- Version management with Archive and Version Services.

Can this be done?

- A.No, OES Linux doesn't support iManager.
- B.No, OES Linux doesn't support iSCSI SANs.
- C.No, OES Linux doesn't support NSS volumes.
- D.Yes, these services can be configured on OES Linux.
- E.No, OES Linux doesn't support Archive and Version Services.
- F.No, OES Linux doesn't support Windows workstations using the Novell Client.

Correct Answers: E

72: Which protocols and utilities transmit data, including user names and passwords, clear-text on the network? (Choose 2.)

- A.ftp
- B.SSH
- C.VPN
- D.https
- E.telnet
- F.Novell Client

Correct Answers: A E

73: Which OES NetWare server deployment pattern can be used to configure your server to host Open Source web database applications?

- A.NAS Server
- B.NetWare AMP
- C.Management Server
- D.Apache/Tomcat Server
- E.Virtual Office Server
- F.exteNd J2EE Web Application Server

Correct Answers: B

74: Click the Exhibit button. What permissions have been assigned to the group associated with the text.txt file shown in the exhibit?

```
nti-linux:/home/rtracy # ls -l ./text.txt
-rw-r--r--  1 rtracy users 6 Mar 14  2006 ./text.txt
nti-linux:/home/rtracy # █
```

- A.Read
- B.Write
- C.Execute
- D.Read and Write
- E.Read and Execute
- F.Write and Execute
- G.Read, Write, and Execute

Correct Answers: A

75: Which upper-layer network protocols are used to establish a connection between the user's web browser or Windows Explorer session on the workstation and the NetStorage service on an OES Linux server? (Choose 2.)

- A.NFS
- B.FTP
- C.AFP
- D.lpr
- E.lpd
- F.HTTP
- G.TFTP
- H.WebDAV

Correct Answers: F H

Part: B

1: You decide to manually edit the configuration file for the DNS service running on your OES Linux server using a text editor. Which file will you use?

- A./etc/dnsd.conf
- B./etc/bind.conf
- C./etc/named.conf
- D./etc/novell-dns.conf
- E./etc/novell-bind.conf

Correct Answers: C

2: You're manually configuring the DHCP configuration file on your OES Linux server with a text editor. You want to add a directive that will configure your DHCP service to automatically configure the default gateway IP address (10.200.200.254) parameter on the Windows XP workstations on your network when an IP address lease is delivered. Which directive will do this?

- A.option router 10.200.200.254;

- B.option routers 10.200.200.254;
- C.option gateway 10.200.200.254;
- D.option router-addr 10.200.200.254;
- E.option gateway-addr 10.200.200.254;
- F.option default-gateway 10.200.200.254;

Correct Answers: B

3: You are configuring the Dynamic Local User policy in a user package for users in your eDirectory tree. Company policy dictates that any local user accounts created on workstations by the Dynamic Local User policy must be immediately deleted when users log out. Which type of Dynamic Local User accounts should you configure the policy to use?

- A.Volatile
- B.Temporary
- C.Transient
- D.Nonvolatile
- E.Non-persistent
- F.The Dynamic Local User policy doesn't support this type of account.

Correct Answers: A

4: Click the Point & Click button to begin. Click on the file or folder in this directory that iFolder will automatically exclude from synchronization by default.

Name	Size	Type	Date Modified
 Picture 001.jpg	1,879 KB	JPEG Image	9/27/2006 5:00 PM
 Picture 002.jpg	1,899 KB	JPEG Image	9/27/2006 5:00 PM
 Picture 003.jpg	1,879 KB	JPEG Image	9/27/2006 5:00 PM
 Picture 004.jpg	1,809 KB	JPEG Image	9/27/2006 5:00 PM
 Picture 005.jpg	1,867 KB	JPEG Image	9/27/2006 5:00 PM
 Picture 006.jpg	1,918 KB	JPEG Image	9/27/2006 5:00 PM
 Picture 007.jpg	187 KB	JPEG Image	9/27/2006 5:30 PM
 Picture 008.jpg	1,933 KB	JPEG Image	9/27/2006 5:29 PM
 Thumbs.db	39 KB	Data Base File	9/27/2006 5:30 PM
 adrive		File Folder	9/29/2006 10:21 AM
 makeboot.bat	1 KB	MS-DOS Batch File	4/20/1998 5:00 PM
 XCOPY.EXE	17 KB	Application	1/26/1994 7:00 AM

Correct Answers:

Name	Size	Type	Date Modified
Picture 001.jpg	1,879 KB	JPEG Image	9/27/2006 5:00 PM
Picture 002.jpg	1,899 KB	JPEG Image	9/27/2006 5:00 PM
Picture 003.jpg	1,879 KB	JPEG Image	9/27/2006 5:00 PM
Picture 004.jpg	1,809 KB	JPEG Image	9/27/2006 5:00 PM
Picture 005.jpg	1,867 KB	JPEG Image	9/27/2006 5:00 PM
Picture 006.jpg	1,918 KB	JPEG Image	9/27/2006 5:00 PM
Picture 007.jpg	187 KB	JPEG Image	9/27/2006 5:30 PM
Picture 008.jpg	1,933 KB	JPEG Image	9/27/2006 5:29 PM
Thumbs.db	39 KB	Data Base File	9/27/2006 5:30 PM
adrive		File Folder	9/29/2006 10:21 AM
malpot.bat	1 KB	MS-DOS Batch File	4/20/1998 5:00 PM
XCOPY.EXE	17 KB	Application	1/26/1994 7:00 AM

5: You're configuring an iPrint system on an OES Linux server. You've decided that your Print Manager will support three Printer Agents. These Printer Agents will represent an HP LaserJet 5M printer, a Minolta 2300N printer, and a Lexmark C500n. The same server will run the Print Manager, Printer Agents, and the IPP service. Can you implement iPrint in this manner?

- A. Yes, this implementation can work correctly.
- B. No, you can't use older printers (such as a LaserJet 5M) with iPrint.
- C. No, you can't implement multiple Printer Agents with a single Print Manager.
- D. No, you can't run the Print Manager, Printer Agents, and the IPP service on the same system.

Correct Answers: A

6: You've just installed a new OES Linux server and need to install it into an existing eDirectory tree. However, SLP hasn't been configured and your OES Linux server is having trouble contacting a server in the tree. Which file can you use to specify the IP address of a server in the existing tree?

- A. /etc/hosts
- B. /etc/hostname
- C. /etc/hosts.nds
- D. /etc/hosts.edir
- E. /etc/ndsd.config
- F. /etc/hosts.novell

Correct Answers: C

7: Which DesktopDNA.exe switch configures the DNA Engine to capture a workstation's personality?

- A. /C
- B. /A
- C. /P
- D. /U
- E. /DNA
- F. /APPLY
- G. /UPLOAD
- H. /CAPTURE

Correct Answers: E

8: You want to install the iFolder 3.1 Client on the workstations in your network. Some of your workstations run the SUSE Linux Enterprise Desktop 10 operating system. What dependent package will be installed on the Linux workstations when installing the iFolder Client?

- A.mm
- B.gcc
- C.mono
- D.htdig
- E.ncpfs
- F.libjpeg
- G.Novell Client

Correct Answers: C

9: Which iFolder access right allows a user to manage membership and access rights to iFolder for all other users except the owner?

- A.Owner
- B.Manager
- C.Read Only
- D.Read/Write
- E.Full Control
- F.Administrator

Correct Answers: E

10: You're working with a customer who is upgrading his NetWare 6.5 server to OES NetWare. The customer previously purchased upgrade protection for his server. Will he be required to purchase new user licenses for OES NetWare?

- A.No, he does not need to purchase new licenses.
- B.Yes, he must purchase new OES NetWare licenses.
- C.He must purchase a new key file (*.NFK), but his existing license file (*.NLF) will continue to work with OES NetWare.
- D.He must purchase a new license file (*.NLF), but his existing key file (*.NFK) will continue to work with OES NetWare.

Correct Answers: A

11: You've just made several configuration changes to the NetStorage service running on your OES Linux server. You now need to restart the service. What commands should you enter at the shell prompt to stop the service? (Choose 2.)

- A.rchttpd stop
- B.rcxinetd stop
- C.rcnetstored stop
- D.rcnovell-xsrvd stop
- E.rcnovell-netstored stop

Ernovell-netstorage stop

Correct Answers: A D

12: Select Point and Click to begin. You need the OES version of Samba on your OES Linux server. Click on the menu in YaST that you would use to install and configure this package.



Correct Answers:



13: A customer currently has four NetWare 5.1 servers implemented in her network. She is considering implementing OES Linux; however, she is concerned that doing so will require her to remove her NetWare servers and replace them with the OES Linux servers. Which statement is true?

A. She can integrate a new OES Linux server directly into her directory tree without replacing the existing NetWare servers.

B. An OES Linux server can't co-exist in the same directory tree with Linux servers. You must use Identity Manager to synchronize data between the two trees.

C. She must first upgrade her NetWare 5.1 servers to NetWare 6.5 before she can integrate an OES Linux server into the existing directory tree.

D.OES Linux servers can't co-exist in the same directory tree with NetWare 5.1 servers. To implement OES Linux, she must maintain two separate directory trees.

E.She must first upgrade her NetWare 5.1 servers to OES NetWare before she can integrate an OES Linux server into the existing directory tree.

Correct Answers: A

14: You are installing an OES Linux server and have decided to implement the NCP Server package. After installation, you notice that an NCP volume named SYS has been created on your server. What directory does this NCP volume point to in the OES Linux server's file system?

A./sys

B./tmp/sys

C./var/opt/sys

D./usr/novell/sys

E./etc/novell/sys

F./home/novell/sys

Correct Answers: D

15: If you're implementing iFolder 3.0 on an OES Linux server, which file systems can you implement on the hard drive partitions that will store your user's iFolder data? (Choose 2.)

A.NSS

B.Ext3

C.Ext2

D.NTFS

E.FAT32

F.Reiser

Correct Answers: B F

16: A customer currently has three Windows NT Servers in his network. One functions as a Primary Domain Controller (PDC); the others as Backup Domain Controllers (BDCs). He wants to integrate OES Linux and eDirectory into his network. Which statement is true?

A.The PDC and the BDCs can be imported into the eDirectory tree hosted by an OES Linux server.

B.The OES Linux server running eDirectory can be imported directly into the Windows NT Server domain.

C.The existing Windows NT Servers must be migrated to OES NetWare before installing an OES Linux server into the network.

D.Domains using BDCs are incompatible with OES Linux and can not be configured to work with an eDirectory tree. They must be removed to implement OES Linux.

E.Identity Manager Bundle Edition can be used to synchronize information between the Windows NT domain controllers and an eDirectory tree hosted by an OES Linux server.

Correct Answers: E

17: You are implementing NetStorage on an OES NetWare server in your network. Your server has been installed in an eDirectory tree named DA-TREE. The server does not have a replica of the eDirectory partitions that contain user objects. It has been configured to use NTP to synchronize time with the other NetWare and OES Linux servers in the network. The server also has Novell Archive and Version Services installed to preserve old versions of user files. Can NetStorage be implemented on this server?

- A. Yes, this server meets the recommended guidelines for installing NetStorage.
- B. No, you can't install NetStorage on an OES NetWare server.
- C. No, you must place at least one replica of an eDirectory partition on the server.
- D. No, you must use TIMESYNC.NLM to synchronize time on a server that will run NetStorage.
- E. No, Novell Archive and Version Services must be installed on a separate NetWare server.

Correct Answers: A

18: Click the Point & Click button to begin. You need to initially configure Role Based Services in iManager to support roles. Click on the option in iManager you would select to do this.



Correct Answers:



19: You're implementing iFolder on an OES Linux server in your network. Your OES Linux server has a mirrored 500 GB SCSI hard disk drive and 2 GB of RAM. eDirectory 8.7.3 is running on the server and it is a member of the DA-TREE tree. You've applied OES Linux Support Pack 1. You want to install iFolder 3.2 on the server; can you do this?

- A. Yes, all prerequisites have been met.
- B. No, you must upgrade to eDirectory 8.8.
- C. No, you must apply Support Pack 2 to use iFolder 3.2.
- D. No, iFolder 3.2 doesn't support mirrored SCSI hard drives.
- E. No, you must upgrade to 4 GB of RAM to install iFolder 3.2.
- F. No, iFolder 3.2 doesn't run on OES Linux. You must use OES NetWare instead.

Correct Answers: C

20: You've used the NCP Server service on your OES Linux server to create an NCP volume named HOME that points to the /home directory. You've configured file system trustee assignments to control access to the data on the NCP volume. Where are the trustee assignments saved?

- A. On the SYS NCP volume.
- B. On the HOME NCP volume.
- C. In your eDirectory tree.
- D. In /home/.trustee_database.xml.
- E. In /var/log/.home_trustees.xml.
- F. In /var/opt/NCP/HOME/.trustees.xml.

Correct Answers: D

21: You are planning a deployment of an OES Linux server in your network. This server needs to provide the following:

- Automatic host configuration using DHCP.
- NSS volumes. ?Name resolution using DNS.

Support for Windows workstations using the Client for Microsoft Networks.

Junctions to other NSS volumes in the network using Distributed File Services (DFS).

Can this be done?

A.No, OES Linux doesn't support DFS.

B.No, OES Linux doesn't support NSS volumes.

C.No, OES Linux doesn't provide DNS services.

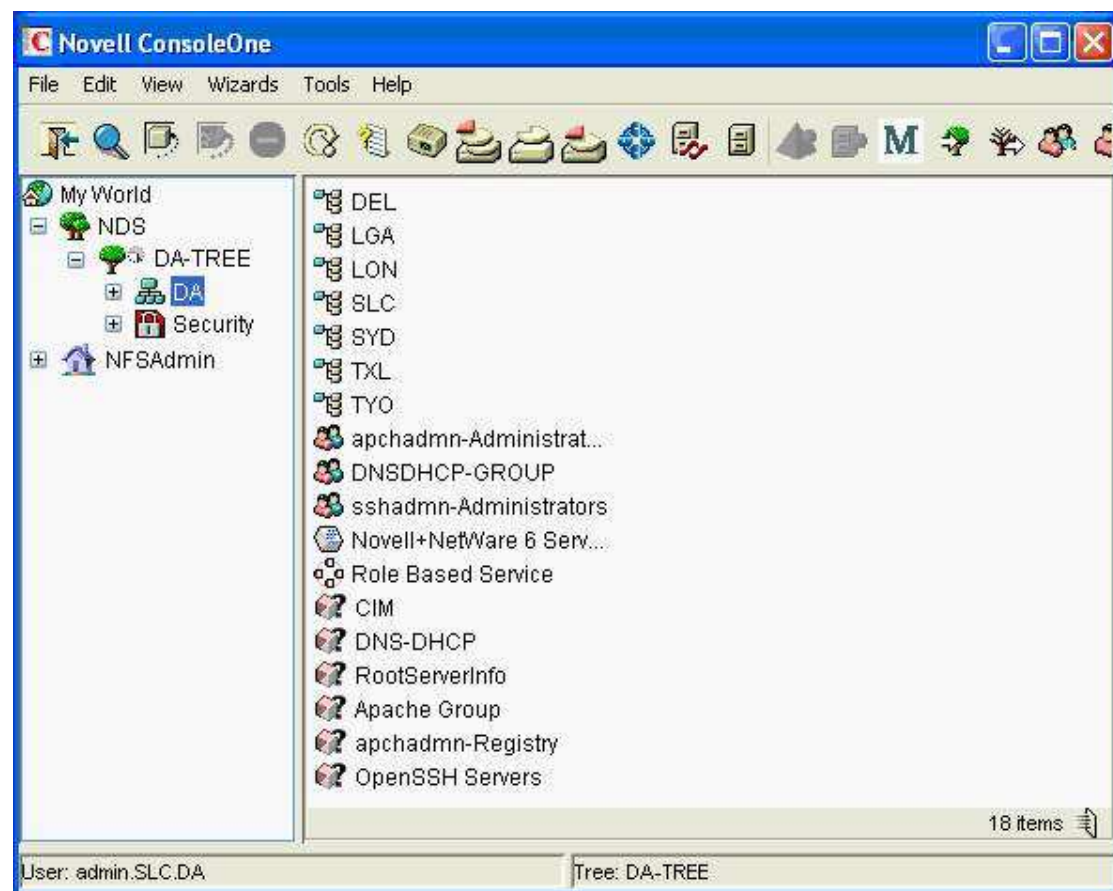
D.No, OES Linux doesn't provide DHCP services.

E.Yes, these services can be configured on OES Linux.

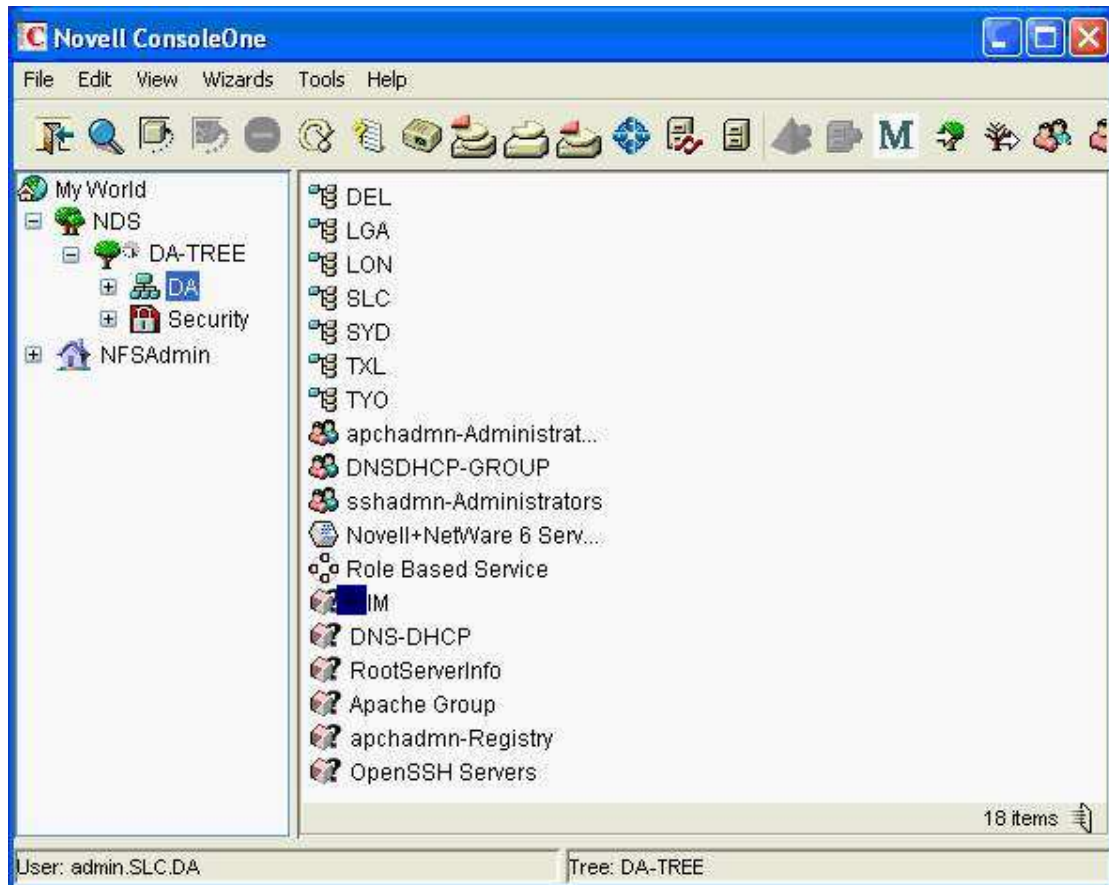
F.No, OES Linux doesn't support Windows workstations using the Client for Microsoft Networks.

Correct Answers: A

22: Click the Point & Click button to begin. Click the object in the eDirectory tree that is used to store Health Monitoring Services information.



Correct Answers:



23: You need to access iMonitor running on an OES NetWare server to check the health of the eDirectory tree running on that server. The server has a DNS name of da1.da.com. Assuming your iMonitor service uses default parameters, which URLs will allow you to access iMonitor on this server? (Choose 2.)

- A. <http://da1.da.com/nds>
- B. <http://da1.da.com:8008/nds>
- C. <http://da1.da.com:8028/nds>
- D. <https://da1.da.com:8009/nds>
- E. <https://da1.da.com:8030/nds>
- F. <http://da1.da.com:8008/iMonitor.html>
- G. <http://da1.da.com:2000/iMonitor.html>
- H. <https://da1.da.com:2200/iMonitor.html>
- I. <https://da1.da.com:8009/iMonitor.html>

Correct Answers: B D

24: Where is the iprint.ini file located on an OES Linux server?

- A. /etc
- B. /etc/iprint
- C. /etc/ippdocs
- D. /var/opt/novell/ippdocs
- E. /var/opt/novell/iprint/htdocs
- F. /var/opt/novell/htdocs/ippdocs

Correct Answers: E

25: Click the Point & Click button to begin. Click on the iManager task you would use to configure NetStorage to allow email addresses as usernames.



Correct Answers:



26: You're managing an OES Linux server using a terminal window. You want to switch from the

Bourne Again Shell to the TC Shell. What command would you enter at the shell prompt to do this?

_____ Answer:

TCSH,/BIN/TCSH

Correct Answers:

27: Which NLM enables an OES NetWare server to provide file and printer sharing using the Server Message Block protocol on TCP/IP?

A.SBM.NLM

B.CIFS.NLM

C.SAMBA.NLM

D.SMBTCP.NLM

E.CIFSTCP.NLM

F.CIFSINIT.NLM

Correct Answers: B

28: Which port does the NTP protocol use to synchronize time between systems?

A.TCP port 26

B.UDP port 123

C.TCP port 202

D.UDP port 389

E.UDP port 119

F.TCP port 2200

Correct Answers: B

29: You manage an OES NetWare server named CORP1. You are implementing CIFS on this server. By default, what name will be assigned to the CIFS server?

A.CORP1-W

B.CORP1-SMB

C.CORP1-CIFS

D.CORP1-Samba

E.No name is assigned by default. The name must be manually configured.

Correct Answers: A

30: Which shell is the default shell used on an OES Linux server?

A.C Shell

B.TC Shell

C.Korn Shell

D.Bourne Shell

E.Bourne Again Shell

Correct Answers: E

31: Where is the iprint.ini file located on an OES NetWare server?

A.Sys:\Etc

B.Sys:\Etc\Iprint

C.Sys:\Etc\Ippdocs

D.Sys:\Apache2\Htdocs\lprint
E.Sys:\Apache2\Htdocs\lppdocs\

Correct Answers: E

32: Which file systems types are supported by OES NetWare server volumes? (Choose 2.)

- A.NSS
- B.Ext3
- C.Ext2
- D.NTFS
- E.Reiser
- F.Traditional NetWare File System

Correct Answers: A F

33: You're configuring iFolder policies. You've created a system-wide policy that specifies a User Disk Space Limit of 150 MB. You've also configured an iFolder user named MHoffmann with a disk space limit of 250 MB. How much disk space can MHoffmann use?

- A.250 MB. If iFolder detects a policy conflict, the user limit overrides the system limit.
- B.150 MB. If iFolder detects a policy conflict, the system limit overrides the user limit.
- C.0 MB. If iFolder detects a policy conflict, both are ignored and the limit is reset to 0 MB.
- D.100 MB. If iFolder detects a policy conflict, both are ignored and the default user disk space limit of 100 MB is applied.

Correct Answers: A

34: You are responsible for managing an OES NetWare server. Your server currently uses a 350 GB SCSI hard disk drive that contains two NSS volumes: SYS and DATA. The SYS volume resides in the SYS NSS pool and the DATA volume in the DATA_POOL NSS pool.

Your DATA volume is quickly running out of free space. You've purchased an additional 500 GB SCSI hard disk drive for the server. You plan to add this device to the DATA_POOL pool to increase the amount of space available on the DATA volume. Will this work?

- A.No, you must create a new pool and volume using the new drive.
- B.Yes, you can add additional space from different storage devices to an existing NSS pool.
- C.No, you must first delete the DATA volume, recreate the pool using the new drive, recreate the volume, and restore data from a backup.
- D.No, you must delete the DATA volume, create a RAID 0 array with the two drives, recreate the volume, and restore data from a backup.
- E.No, you can add the space on the new drive to the existing pool, but the DATA volume won't be able to use it. You must create a new volume to use the additional space.

Correct Answers: B

35: During an upgrade to OES NetWare from a prior version of NetWare, which of the following Novell Modular Authentication Service (NMAS) methods are installed by default? (Choose 2.)

- A.Entrust

- B.Blowfish
- C.NDS Login
- D.CertMutual
- E.DIGEST-MD5
- F.Enhanced Password
- G.NDS Change Password
- H.Challenge - Response
- I.X509 Advanced Certificate

Correct Answers: C H

36: Which utility is used to prepare an existing network for an upgrade to OES NetWare?

- A.iManager
- B.Remote Manager
- C.Deployment Manager
- D.Novell Server Upgrade Utility
- E.Novell Server Consolidation Utility

Correct Answers: C

37: Which file system is used by default for the disk partitions on an OES Linux server?

- A.Ext2
- B.Ext3
- C.NTFS
- D.FAT32
- E.Reiser

Correct Answers: E

38: Where are the iFolder 3.1 Client installation files stored on an iFolder 3.x server?

- A./var/opt/novell/ifolder-client
- B./var/opt/novell/ifolder/ifolder3-client
- C./var/opt/novell/webapps/ifolder-client/
- D./var/opt/novell/tomcat4/webapps/ifolder3-client/
- E./var/opt/novell/ifolder/webapps/ifolder3-client/

Correct Answers: D

39: When installing the iPrint Client on a Windows workstation, which installation file will display installation wizard dialog boxes and require the user to respond to the wizard prompts?

- A.nipp.exe
- B.nipp.zip
- C.nipp-s.exe
- D.nipp-u.exe
- E.nipp-sr.exe
- F.nipp-su.exe

Correct Answers: A

40: If you're using the Hosts file or DNS to provide host name resolution for your ZENworks

Automatic Workstation Import service, what host name must you configure to resolve to your Import server's IP address?

A.ZWSREG

B.ZIMPORT

C.ZENWSREG

D.ZWSIMPORT

E.ZENWSIMPORT

F.You use your Import server's host name, such as DA1 or NTI-PROVO.

Correct Answers: E

41: You are working with a customer who wants to implement OES Linux in his network. He needs the OES Linux server to support Windows workstations using the Novell Client. In addition, the server must host an internal web site that serves web pages dynamically generated from a database that will also run on the server. Which services should be installed on the server? (Choose 3.)

A.DNS

B.NFS

C.DFS

D.MySQL

E.Samba

F.iSCSI

G.MS SQL

H.NCP Server

I.Apache Web Server

J.Archive and Version Services

Correct Answers: D H I

42: In preparation for migrating workstation personalities using ZENworks, you've created a Personality Store on your NetWare server's VOL1 volume. Personalities will be stored in VOL1:\Ddna\Data. Your users reside within several different containers within the O=DA container, so you've granted O=DA Read, Write, and File Scan rights to VOL1:\Ddna\Data. You've created an application object to collect workstation personalities when users login to the tree. However, when your users do this, the DNA Engine generates an error and the workstation personalities aren't saved in the Personality store. Your users use a mixture of Windows XP Professional and Windows 2000 Professional systems. What's causing the problem?

A.The Personality Store must reside on the server's SYS volume.

B.The Personality Store must reside at the root of a server volume.

C.Personality Migration isn't compatible with Windows 2000 systems.

D.Personality Migration isn't compatible with mixed Windows operating systems.

E.Personality Migration doesn't support trees where users reside in dispersed contexts.

F.Users need the Create right to the Personality Store in addition to the rights already granted.

Correct Answers: F

43: You've used the vi text editor on an OES Linux server to modify a configuration file in

/etc/sysconfig. You've restarted the service, but the changes you made have not been applied. What is causing this to happen?

- A.You need to reboot the server.
- B.You need to run SuSEconfig to apply the changes.
- C.You shouldn't use a text editor to modify files in /etc/sysconfig.
- D.You need to wait a few minutes while the service reads the new configuration from the file.
- E.You need to force the service to re-read the configuration file by running it with the /force option.

Correct Answers: B

44: Which directory attributes are used to create an organizational chart in eGuide? (Choose 2.)

- A.Report
- B.Manager
- C.isReport
- D.Director
- E.isManager
- F.Supervisor
- G.isSubordinate

Correct Answers: B E

45: You're managing an Novell Open Enterprise Server-Linux (OES Linux) server and have switched to an alternate console screen to access a shell prompt. What keystroke can you use to return back to the GUI desktop on your server?

- A.Alt+1
- B.Alt+Tab
- C.Ctrl+Esc+7
- D.Ctrl+Alt+F7
- E.Ctrl+Alt+F1
- F.Ctrl+Shift+F1

Correct Answers: D

46: You are implementing an OES Linux server that will be used to store user files.You plan to implement Novell iFolder and NetStorage services to enhance user access to those files. What type of file system can you use on your server's hard drive partitions? (Choose 2.)

- A.NSS
- B.NTFS
- C.FAT32
- D.Reiser
- E.Traditional NetWare File System

Correct Answers: A D

47: You are ready to start an in-place upgrade of a NetWare 5.1 server to OES NetWare. You've inserted the OES NetWare Operating System CD in the DVD drive of your server. What command do you need to enter at the server console to mount the disc?

_____ Answer:

LOADCDROM,LOADCDROM.NLM,CDROM,CDROM.NLM

Correct Answers:

48: You're configuring an iPrint system on an OES Linux server. To balance the load and relieve printing bottlenecks on your system, you've decided to implement two Print Managers on the server that will run concurrently. The first is named iPrint1.SLC.DA; the second iPrint2.SLC.DA. You've decided that each Print Manager will support two Printer Agents. Each Printer Agent represents a Minolta high-volume printer that has its own-built in network interface and print server firmware. Can you implement iPrint in this manner?

- A. Yes, this implementation can work correctly.
- B. No, you can't use printers with built-in print servers with iPrint.
- C. No, you can't implement more than one Printer Agent on a single Print Manager.
- D. No, you can't run multiple Print Managers on the same system at the same time.

Correct Answers: D

49: You are preparing to use the Server Consolidation Utility to migrate volumes from an existing NetWare 6.5 server to an OES Linux server. You need to enable SMS on the destination Linux server. Which commands do you need to enter at the shell prompt to do this? (Choose 2.)

- A. /etc/init.d/smsd start
- B. /etc/init.d/tsafsd start
- C. /opt/novell/sms/bin/smsd
- D. /opt/novell/sms/bin/smdr
- E. /opt/novell/sms/bin/tsafs
- F. /etc/init.d/smsconfigd start
- G. /etc/init.d/novell-smdrd start
- H. /opt/novell/sms/bin/smsconfig -l tsafs

Correct Answers: G H

50: You are working with a customer who wants to implement Novell Open Enterprise Server-Linux (OES Linux) in her network. The OES Linux servers must support log-ins from Windows XP workstations running the Novell Client via the NCP Server service. The servers must provide users with extensive file storage using Novell Storage Services (NSS). This storage must be distributed among the various OES Linux servers using Distributed File Services (DFS) junctioning. Can this be done?

- A. Yes, OES Linux supports all of the required services.
- B. No, OES Linux doesn't support distributed storage with DFS junctions.
- C. No OES Linux can't be configured to provide user file storage services.
- D. No, OES Linux doesn't support NSS. You must use the native Reiser file system instead.
- E. No, OES Linux can't support Windows XP workstations running the Novell Client. Samba must be implemented on the server and the Client for Microsoft Networks on the workstations.

Correct Answers: B

51: You are responsible for managing an OES Linux server that uses NSS. You've created an NSS

volume named DATA that is mounted at /var/nss/data on an external SCSI RAID 5 array. You want to add a user named bjohnson as a trustee of the root directory of the DATA volume. The bjohnson user resides in the .LGA.DA container in your eDirectory tree (DA-TREE). This user needs to be granted the following rights to the root directory of DATA: ?

- Read
- Write
- Create
- File Scan

Which command will accomplish this?

- A.rights -f /var/nss/data -r rwcf -t bjohnson.LGA.DA
- B.rights -f /var/nss/data -r rwcf -t bjohnson.LGA.DA.DA-TREE
- C.rights modify /var/nss/data -r rwcf trustee bjohnson.LGA.DA
- D.rights add -f /var/nss/data -r rwcf -t bjohnson.LGA.DA.DA-TREE
- E.rights -f /var/nss/data -r rwcf trustee bjohnson.LGA.DA.DA-TREE
- F.rights -nss /var/nss/data -r rwcf trustee bjohnson.LGA.DA.DA-TREE

Correct Answers: E

52: Which directory in the file system of an OES Linux server contains link files that reference hardware devices in the system?

- A./hw
- B./lnk
- C./dev
- D./usr
- E./opt
- F./etc/rc.d
- G./var/hardware

Correct Answers: C

53: You're implementing iPrint on an OES NetWare server. Your Printer Manager is represented by the iPrintMgr.SLC.DA object in your eDirectory tree. You've just added an A record to your DNS server for your iPrint service that maps iprint.da.com to your server's IP address. You've unloaded your Print Manager NLM and now need to reload it and configure it to use DNS instead of IP addresses. Which server console command will do this?

- A.ndpsm .iPrintMgr.SLC.DA /dns=on
- B.iprintm .iPrintMgr.SLC.DA /dns=on
- C.ndpsm .iPrintMgr.SLC.DA iprint.da.com
- D.iprintm .iPrintMgr.SLC.DA iprint.da.com
- E.ndpsm .iPrintMgr.SLC.DA /dnsname=iprint.da.com
- F.iprintm .iPrintMgr.SLC.DA /dnsname=iprint.da.com

Correct Answers: E

54: To configure user-defined policies using the ADM files for workstation objects, which policy do you configure?

- A.iPrint

- B.Remote control
- C.Computer extensible
- D.Workstation imaging
- E.ZENworks Desktop Management agent

Correct Answers: C

55: You are planning an implementation of iPrint on an OES NetWare server. If you use the Novell iPrint Server deployment pattern, which products will be installed in addition to iPrint? (Choose 2.)

- A.MySQL
- B.eGuide
- C.iFolder
- D.Quick Finder
- E.Apache2 Web Server
- F.Nsure Audit Starter Pack
- G.Tomcat 4 Servlet Container
- H.exteNd J2EE Web Application Server

Correct Answers: E G

56: You're preparing to migrate an NSS volume named DATA on a NetWare 6.5 server to an NSS volume on an OES Linux server. You know that open files on the source volume won't be migrated by default. What command can you enter at the server console of your NetWare server to allow open files to be migrated?

- A.nss /copyopenfiles=ON
- B.nss /copyopenfiles=DATA
- C.nss /closeopenfiles=DATA
- D.nss /filecopyonwrite=DATA
- E.nss /migrateopenfiles=DATA
- F.nss /allowopenfilemigration=ON

Correct Answers: D

57: If Universal Password is not implemented, which password is used by clients to authenticate to the CIFS service on a NetWare server?

- A.SMB Password
- B.NDS Password
- C.CIFS Password
- D.Simple Password
- E.Enhanced Password
- F.Directory Password

Correct Answers: D

58: Which protocol does the OES Linux Samba service use to provide file and printer sharing?

- A.Network File System
- B.Line Printer Daemon

- C.Server Message Block
- D.NetWare Core Protocol
- E.File Transfer Protocol
- F.Internetwork Packet Exchange

Correct Answers: C

59: You plan to implement NetStorage on an OES Linux server. You plan to install NCP Server and NSS on the server as well to provide backend storage. This server currently resides in an existing eDirectory tree with other OES NetWare servers. It contains a Read-Only replica of the eDirectory partition where your organization's user objects reside. Can you implement NetStorage on this server?

- A.Yes, this system meets all of the recommended guidelines.
- B.No, you can't install NCP Server and NSS on the same system.
- C.No, NetStorage doesn't support NCP volumes for backend storage.
- D.No, NetStorage doesn't support NSS volumes for backend storage.
- E.No, NetStorage requires a fully-writable replica (such as a Master or Read/Write replica) of the partition where user objects reside.

Correct Answers: A

60: You need to deliver applications to your users and workstations that reside in remote locations outside your organization's firewall. What is required to accomplish this using ZENworks Desktop Management?

- A.Load Nal.nlm with the -N switch.
- B.Implement the ZENworks Middle-Tier server.
- C.Load Appman.nlm with the -PASSTHROUGH switch.
- D.Enable dynamic NAT passthrough on the server where ZENworks is installed.

Correct Answers: B

61: A customer wants to use their OES NetWare 100-user license to install 10 OES NetWare servers into their eDirectory tree. Can he do this?

- A.Yes, but the maximum number of servers he can install is 10.
- B.Yes, he can install as many OES NetWare servers as they want in the tree using the same license.
- C.No, he can only install a single OES NetWare server no matter how many user licenses are purchased.
- D.No, he is only allowed to install two OES NetWare servers (one production server; one hot-spare backup server) with a 100-user license.
- E.No, he may install up to 5 OES NetWare servers with a 100-user license, but each one must reside in a different eDirectory tree.

Correct Answers: B

62: Click the Point & Click button to begin. You need to create a Driver Store on your OES Linux server. Click on the category in iManager that you would use to do this.



Correct Answers:



63: Which file is used to configure the DHCP service running on an OES Linux server?

- A./etc/dhcp_conf
- B./etc/dhcpd.conf
- C./etc/dhcp/dhcp_conf
- D./etc/dhcp/dhcpd.conf

E./var/dhcpd/lib/dhcpd.conf

Correct Answers: B

64: Which ZENworks Application Management feature allows administrators to install applications after normal working hours?

- A.Application caching
- B.Lights-out distribution
- C.Application load balancing
- D.Location-independent access
- E.Application fault-tolerance
- F.Push-pull application distribution

Correct Answers: B

65: You've recently implemented a new eDirectory tree in your network using Open Enterprise Server. You installed server DA2 first in the tree. You then installed OES servers DA5, DA4, DA3, DA1, DA6, and DA7 in that order. Which servers automatically received a Read/Write replica of your eDirectory tree's root partition? (Choose 2.)

- A.DA1
- B.DA2
- C.DA3
- D.DA4
- E.DA5
- F.DA6
- G.DA7

Correct Answers: D E

66: You're using a Novell Linux Desktop workstation and need to access your iFolder server. What command would you enter at a shell prompt to start iFolder on your workstation? Answer:

IFOLDER,/OPT/NOVELL/IFOLDER3/BIN/IFOLDER

Correct Answers:

67: You're planning the deployment of a new Open Enterprise Server network. You will create a new eDirectory tree with the first OES server you install. Each server in the tree will function in a specified role. You plan to install the following servers:

DA1. DA1 will be an OES Linux server that will function as an iFolder server and as the NTP time provider for the network.

DA2. DA2 will be an OES NetWare server that will be used to create an iSCSI SAN using the other servers in the network.

DA3: DA3 will be an OES Linux server that will run a MySQL database for a network application.

DA4: DA4 will be an OES Linux server that will run Samba.

DA5: DA5 will be an OES Linux server that will run iManager to provide remote management services for the entire network.

Which server should be the first server installed in the eDirectory tree?

- A.DA1

- B.DA2
- C.DA3
- D.DA4
- E.DA5

F.It doesn't matter which OES server is installed first in the eDirectory tree.

Correct Answers: B

68: Which daemon provides the Novell Remote Manager service on an OES Linux server?

- A.rmgrd
- B.nrmd
- C.httpd
- D.novell-nrmd
- E.novell-httpd
- F.novell-httpstk

Correct Answers: F

69: You are planning an implementation of iPrint on an OES Linux server and you are concerned about spooled print jobs consuming excessive amounts of disk space on your server's root (/) disk partition. To keep this from happening, you decide to create a separate disk partition for the directory that will contain spooled print jobs. Which directory should be used for the mount point of this disk partition?

- A./etc
- B./opt
- C./usr
- D./var
- E./home
- F./iprint
- G./bin
- H./sbin

Correct Answers: D

70: You need to allow a file named update.sh executable by its owner (and no other users). Which command will do this?

- A.exec update.sh
- B.chmod +x update.sh
- C.chmod u+x update.sh
- D.chmod g+x update.sh
- E.chuser +x update.sh
- F.chmod u=rw update.sh
- G.execute update.sh -user

Correct Answers: C

71: Which eDirectory object is LUM-enabled by default when LUM is installed on an OES Linux server?

- A.Admin
- B.[Public]
- C.The OES Linux server object.
- D.NSS volume objects on the OES Linux server.
- E.The server object that contains the master replica of the root partition of the tree.

Correct Answers: A

72: Which objects can you associate with a workstation package? (Choose 3.)

- A.User
- B.Group
- C.Alias
- D.Server
- E.Printer
- F.Profile
- G.Container
- H.Workstation
- I.Workstation Group

Correct Answers: G H I

73: When the User search category is created in eGuide, which of the following LDAP classes are included by default (assuming eGuide uses an eDirectory tree for the directory service)? (Choose 3.)

- A.Person
- B.ldapUser
- C.GroupOfNames
- D.otherMailbox
- E.organization
- F.InetOrgPerson
- G.organizationalUnit
- H.OrganizationalPerson
- I.strongAuthenticationPerson

Correct Answers: A F H

74: You need to manage file system rights for files on an NSS volume on an OES Linux server. What utility can you use to do this?

- A.nssmu
- B.nflag
- C.filer
- D.rights
- E.fileman
- F.Konqueror

Correct Answers: D

75: You are preparing to deploy Universal Password on an OES NetWare server. You've loaded

SDIDIAG.NLM to check the container where your users reside for SDI Key consistency. If the container you want to check is LGA.DA in the DA-TREE eDirectory tree, which command would you enter at the SDIDIAG prompt?

- A.CHECK -v >> sys:system\sdinotes.txt -n LGA
- B.CHECK -v >> sys:system\sdicheck.txt -n LGA.DA.
- C.SDICHECK -v >> sys:system\sdicheck.txt -n LGA.DA.
- D.SDICHECK -v >> sys:system\sdicheck.txt -n *.LGA.DA.
- E.CHECK -v >> sys:system\sdinotes.txt -n LGA.DA.DA-TREE.
- F.CHECK -v >> sys:system\sdinotes.txt -n *.LGA.DA.DA-TREE.
- G.SDICHECK -v >> sys:system\sdinotes.txt -n LGA.DA.DA-TREE.

Correct Answers: E