

**Exam Code:** 000-787

**Exam Name:** ibm tivoli business sys mgr v3.1 distributed  
implementation

**Vendor:** IBM

**Version:** DEMO

## Part: A

1: Which method starts an upload of all the Tivoli NetView resources to IBM Tivoli Business Systems Manager (ITBSM)?

- A. from the ITBSM GUI, select Tools then ITBSM Adapter Manager: Bulk Upload
- B. from the ITBSM Database Server, execute the ovbulkdiscovery command
- C. from the IBM Tivoli NetView server, execute the ovbulkdiscovery command
- D. from the IBM Tivoli NetView menu, select Tools then ITBSM Adapter Manager: Bulk Upload

**Correct Answers: D**

2: In which database are Microsoft SQL jobs stored?

- A. msdb
- B. Object
- C. master
- D. northwind

**Correct Answers: A**

3: What is the function of the Resource Priority property on any resource?

- A. It determines the Alert Level of the Resource.
- B. It determines the priority of an event received by this Resource.
- C. It determines the priority of any Child Event sent from this Resource.
- D. It determines the color of the alert when an Alert Threshold is crossed.

**Correct Answers: C**

4: What does the tgmtaskconfig command do?

- A. It configures Task Server code on the server where Task Server is installed.
- B. It defines IBM Tivoli Business Systems Manager (ITBSM) tasks to Task Server.
- C. It configures Task Server to recognize tasks defined in IBM Tivoli Enterprise Console (ITEC).
- D. It configures the list of Task Servers to be connected to by the task process running on the ITBSM servers.

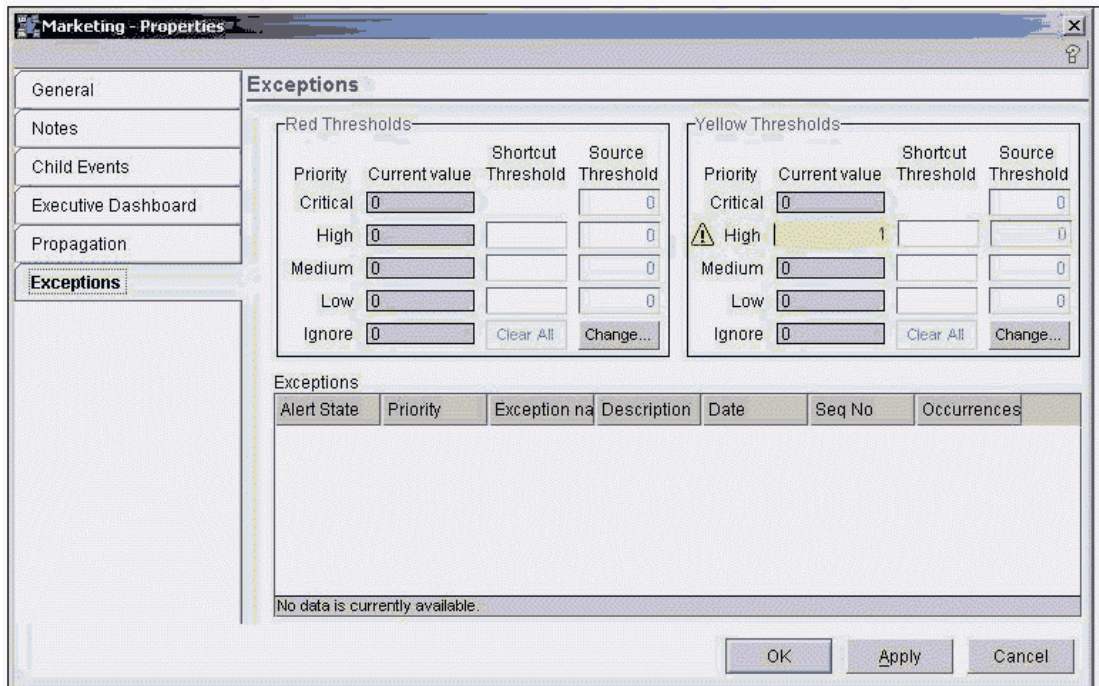
**Correct Answers: D**

5: Which two statements are true about distributed object placement in the IBM Tivoli Business Systems Manager (ITBSM) All Resources view? (Choose two.)

- A. The placedistributedobject command is used.
- B. The distributed resources are inserted via the ITBSM GUI.
- C. Resources are dragged and dropped into the All Resources view.
- D. SQL tables are used to place the Resource based on the Discovery Event.
- E. The rule-based technique is used to place the Resource based on the Discovery Event.

**Correct Answers: D E**

6: Click the Exhibit button. The diagram shows the Exceptions tab for a Business System shortcut. How are the Current values set?



- A. by typing the value to be set in the Current value column
- B. by Resources in the Business System receiving Exception Type events
- C. by clicking on the Change button on the Exception Type that is to be changed
- D. by navigating to the Non-Shortcut Business System and clicking on the Change button

**Correct Answers: B**

7: How is a service created for the IBM Tivoli Business Systems Manager (ITBSM) Executive Dashboard?

- A. right-click on the Tree View and insert a New Service
- B. drag the Resource into the Executive Dashboard view
- C. modify the General tab on the Properties page of the Resource
- D. modify the Executive Dashboard tab on the Properties page of the Resource

**Correct Answers: D**

8: Which group enables an IBM Tivoli Business Systems Manager (ITBSM) Web Console to create Shared Filters?

- A. TBSM\_Administrators
- B. TBSM\_WebConsoleUsers
- C. TBSM\_Web\_Console\_Users
- D. TBSM\_Web\_Console\_Administrators

**Correct Answers: A**

9: Which SQL table in the Object Database is used to turn on event logging for IBM Tivoli Business Systems Manager (ITBSM) distributed events?

- A. GEM\_Options
- B. TBSMD\_Tracing
- C. GEM\_Trace\_Settings

D.TBSMD\_Trace\_Options

**Correct Answers: A**

10: A Tivoli task defined on the IBM Tivoli Business Systems Manager (ITBSM) GUI will NOT execute unless the task is run on which type of host?

A.a Tivoli Task Server

B.a management application server

C.a host associated with the resource displayed in ITBSM

D.a Tivoli endpoint or managed node known to the Task Server

**Correct Answers: D**

11: Events from IBM Tivoli Enterprise Console (ITEC) are not appearing in IBM Tivoli Business Systems Manager (ITBSM.) Which two log files should be checked to obtain the information needed to address this problem? (Choose two.)

A.msgGTM\_AL.log

B.traceGTM\_AL.log

C.AL200408131845.log

D.EPS200408170903.log

E.ASICommonlistenerMsg.1.log

**Correct Answers: A B**

12: A customer needs to create an IBM Tivoli Business Systems Manager (ITBSM) Console Server. Which two software products are installed on the Console Server? (Choose two.)

A.MKS Toolkit V8.7

B.IBM WebSphere V5.0.2.6

C.IBM Tivoli Framework V3.9

D.Microsoft SQL Server 2000

E.Microsoft Host Integration Server Administrator Client 2000

**Correct Answers: A B**

13: How is the log level for the ASIStagedEventLoader set?

A.execute sh setLoggingLevel.ksh ASIStagedEventLoader

B.modify the ASIStagedEventLoader.properties file and edit MessageLoggingLevel=

C.use Regedit and modify the Components\ASIStagedEventLoader\Settings\Log\LogLevel Key

D.modify the Server.properties file and edit com.Tivoli.tbsm.server.Servers.

ASIStagedEventLoader.traceLevel=

**Correct Answers: C**

14: What is used for pattern matching in distributed resource placement in the All Resources view?

A.Pperl patterns

B.Korn shell scripts

C.regular expressions

D.SQL patterns and functions

**Correct Answers: D**

15: Which three actions are required to uninstall IBM Tivoli Business Systems Manager (ITBSM) base services? (Choose three.)

- A.stop the ITBSM base services
- B.use standard Windows Uninstall
- C.remove the WebSphere Application Server
- D.use the \_itbsmUninst/uninstall.sh script on UNIX
- E.stop the SQLSERVERAGENT Service on the Database Server
- F.remove the database prior to removing the ITBSM base services

**Correct Answers: A B E**

16: Where would a customer obtain the IBM Tivoli Business Systems Manager (ITBSM) component software?

- A.Passport Advantage
- B.only available on CD
- C.Tivoli Support web site
- D.IBM Manufacturing Division

**Correct Answers: A**

17: When installing an IBM Tivoli Business Systems Manager (ITBSM) History Server to provide reporting, which three components must be installed? (Choose three.)

- A.MKS Toolkit
- B.IBM WebSphere
- C.Merrant JDBC Drivers
- D.Microsoft Host Integration Server
- E.Internet Information Services(IIS)
- F.Microsoft SQL Server 2000 or 2003

**Correct Answers: A E F**

18: How are Tivoli tasks associated with IBM Tivoli Business Systems Manager (ITBSM) resource classes?

- A.Tivoli tasks are associated with resource instances, not resource classes.
- B.copy the Tivoli Task Library from the Tivoli Desktop and paste it in the ITBSM GUI
- C.extract the Tivoli Task Library code, parse the code, and associate the Tivoli Task Library with the resource class
- D.provide the Tivoli Task Library as a parameter when creating the distributed resource class using the gemgenprod command

**Correct Answers: C**

19: Which command(s) start and stop the IBM Tivoli Business Systems Manager (ITBSM) services?

- A.sc tbsm\_start.ksh and sc tbsm\_stop.ksh
- B.sh start\_tbsm.ksh and sh stop\_tbsm.ksh

C.sh tbsm\_shutdown.ksh and sh tbsm\_start.ksh

D.sh svc\_control.ksh and sh svc\_control.ksh

**Correct Answers: D**

20: The IBM Tivoli Business Systems Manager (ITBSM) servers receive an event via the Agent Listener. What is required to add an icon to the All Resources view for a distributed resource?

A.The ITBSM Console must be closed and re-opened.

B.The event must be validated by ITBSM and must have a green alert state.

C.The ITBSM Discover Resource service must be activated prior to receiving the event.

D.The event must post against a defined resource class and resource placement criteria must be met.

**Correct Answers: D**