

**Exam Code:** 000-633

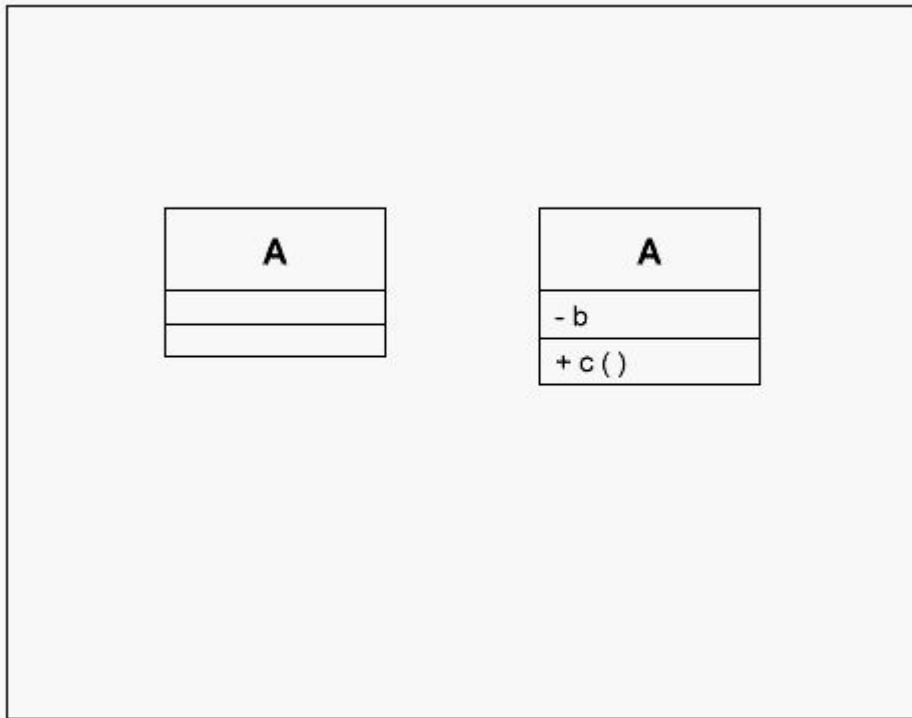
**Exam Name:** Rational-object oriented analysis and  
design-part1

**Vendor:** IBM

**Version:** DEMO

## Part: A

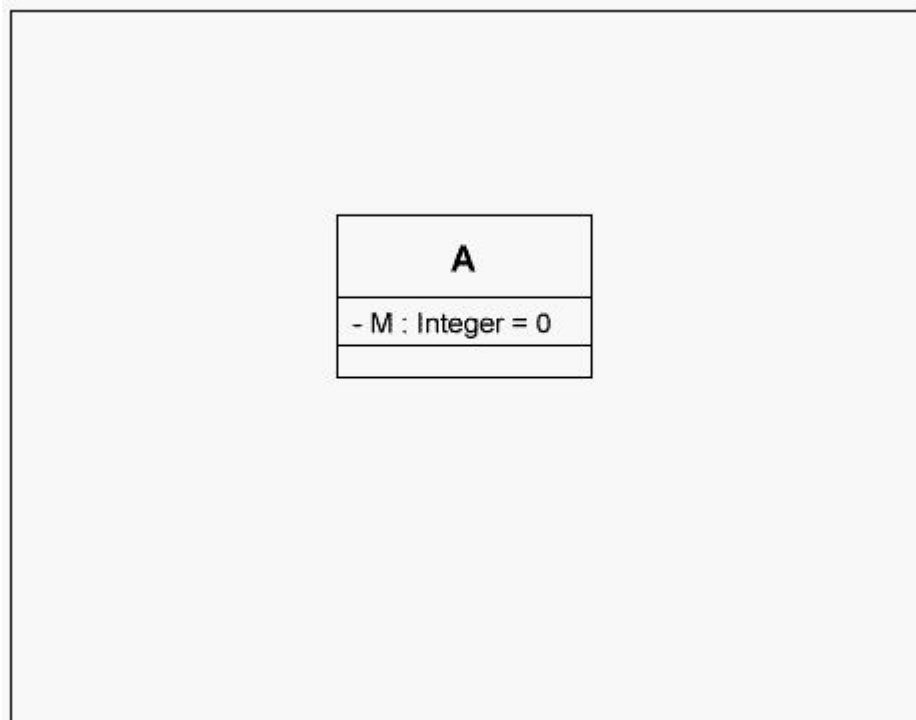
1: Click the Exhibit button below. What do the icons on the illustration represent?



- A. Two distinct objects
- B. Two distinct classes
- C. Same class
- D. Same object

**Correct Answers: C**

2: Click the Exhibit button below. What kind of attribute value does M represent in the diagram?



- A.Static value of 0
- B.Default value of 0
- C.Current value of 0
- D.Constant value of 0

**Correct Answers: B**

3: Which of the following are characteristics of a package? (Select all that apply.)

- A.Helpful in organizing classes in large models
- B.May include nested packages
- C.A logical collection of classes
- D.Always realizes an interface

**Correct Answers: A B C D**

4: What relationships are allowed between actors?

- A.Extend
- B.Include
- C.Realization
- D.Generalization

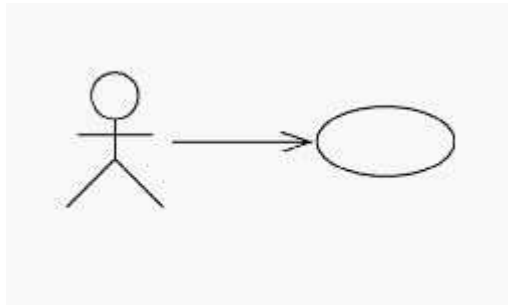
**Correct Answers: D**

5: What does a sequence diagram represent?

- A.Classes and their relationships
- B.The life history of a given class
- C.Relationships among use cases and scenarios
- D.All system-level interfaces
- E.Objects and the messages involved in a single scenario

**Correct Answers: E**

6: Click the Exhibit button below. What does this diagram show about the relationship between the actor and use case?



- A. The actor inherits behavior from the use case.
- B. The actor depends on the use case.
- C. The actor initiates the use case.
- D. The actor realizes the use case.

**Correct Answers: C**

7: What principle enables you to modify the implementation of a class without impacting client code?

- A. Polymorphism
- B. Encapsulation
- C. Inheritance
- D. Multiplicity
- E. Abstraction

**Correct Answers: B**

9: Which relationships apply between use cases? (Select all that apply.)

- A. Extend
- B. Inheritance
- C. Generalization
- D. Include

**Correct Answers: A C D**

10: An interface is

- A. A stereotype of a package representing the methods which exported classes in the package support.
- B. A description for the externally visible operations of a class, component, subsystem, or other entity.
- C. The public and private parts of a class.
- D. A description of the externally visible operations of a package.

**Correct Answers: B**

12: What statement best describes an association?

- A.A general relationship among classes indicating that the classes are connected in some way.
- B.Represented on a class diagram using a diamond symbol.
- C.Always represented on a class diagram using an arrow.
- D.A relationship from a whole to its parts.
- E.Always one-way.

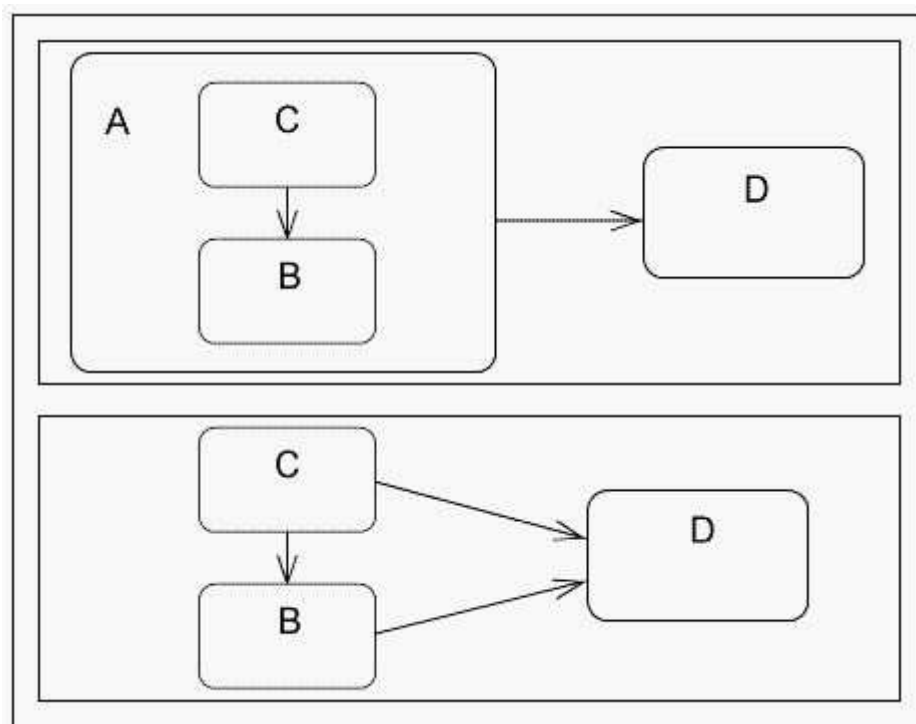
**Correct Answers: A**

13: What statement defines abstraction?

- A.An approach that helps us deal with complexity by emphasizing relevant characteristics and suppressing other details.
- B.The practice of separating the interface of a class from its implementation and hiding the implementation.
- C.A specialized form of association in which a whole is related to its parts.
- D.A logical collection of classes.
- E.A number of time-ordered steps or statements expressed in natural language.

**Correct Answers: A**

14: Click the Exhibit button below. The two statechart diagrams shown here represent the same information.



- A.True
- B.False

**Correct Answers: A**

16: What relationships can exist between packages? (Select all that apply.)

- A.Generalization
- B.Associations

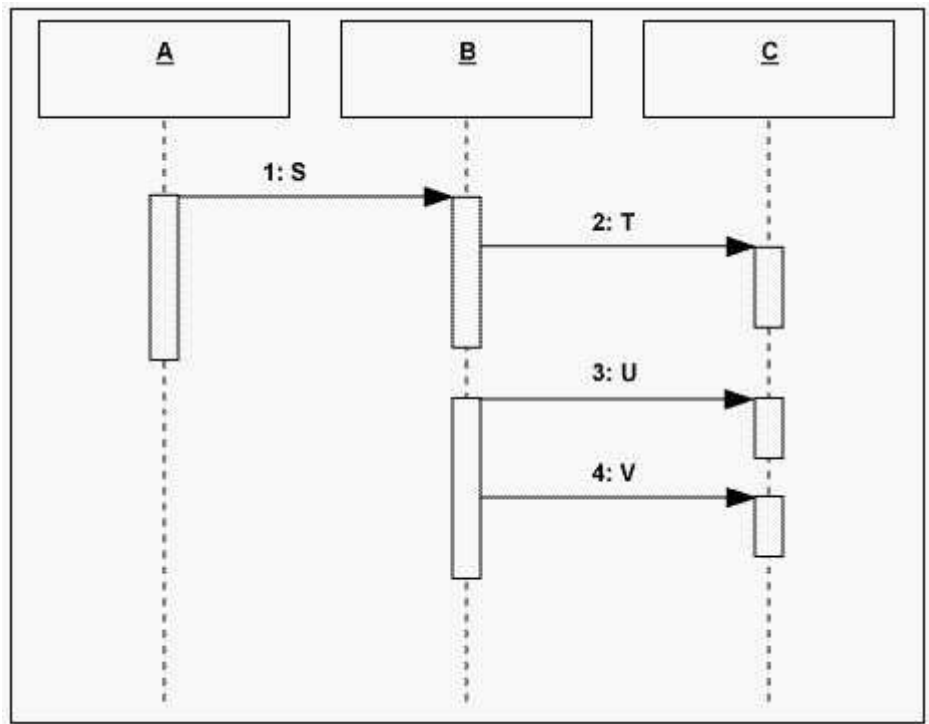
C.Aggregation

D.Dependency

**Correct Answers: A B D**

17: Click the Exhibit button below.

How long does A maintain control?



A.Until step 4 is completed

B.Until step 2 is complete

C.Until all steps are completed

D.Until step 3 starts

**Correct Answers: B**

18: What can a subclass inherit from its superclass?

A.Attributes and operations only

B.Operations only

C.Relationships only

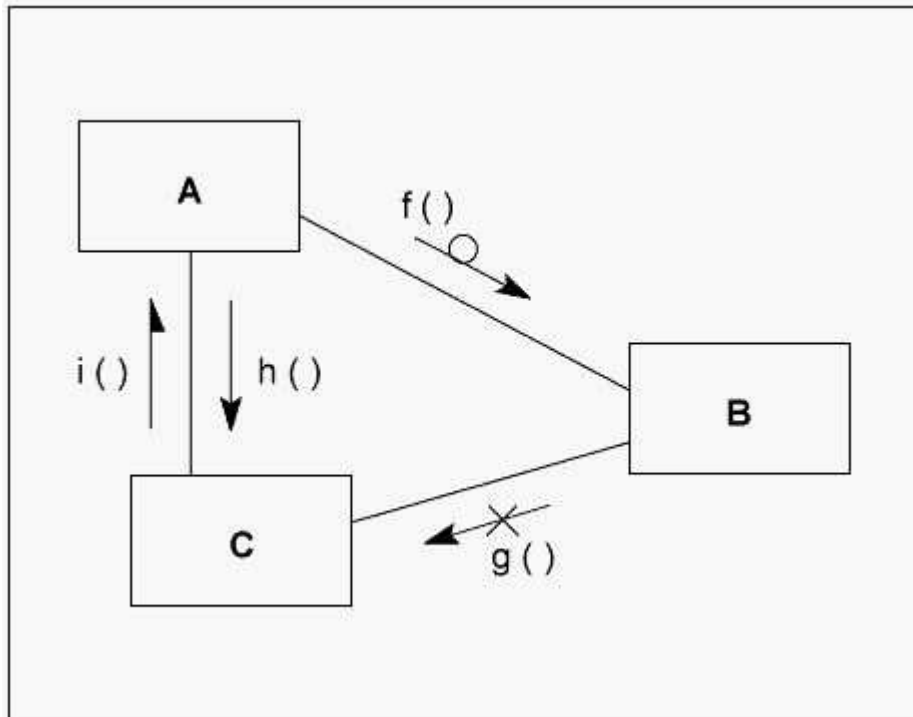
D.Attributes, operations, and relationships

E.Use cases

**Correct Answers: D**

19: Click the Exhibit button below.

What adornment in this figure represents simple messaging?



A.f()

B.g()

C.h()

D.i()

**Correct Answers: C**

20: You can specify the multiplicity of an attribute by inserting a suitable expression just after the attribute name.

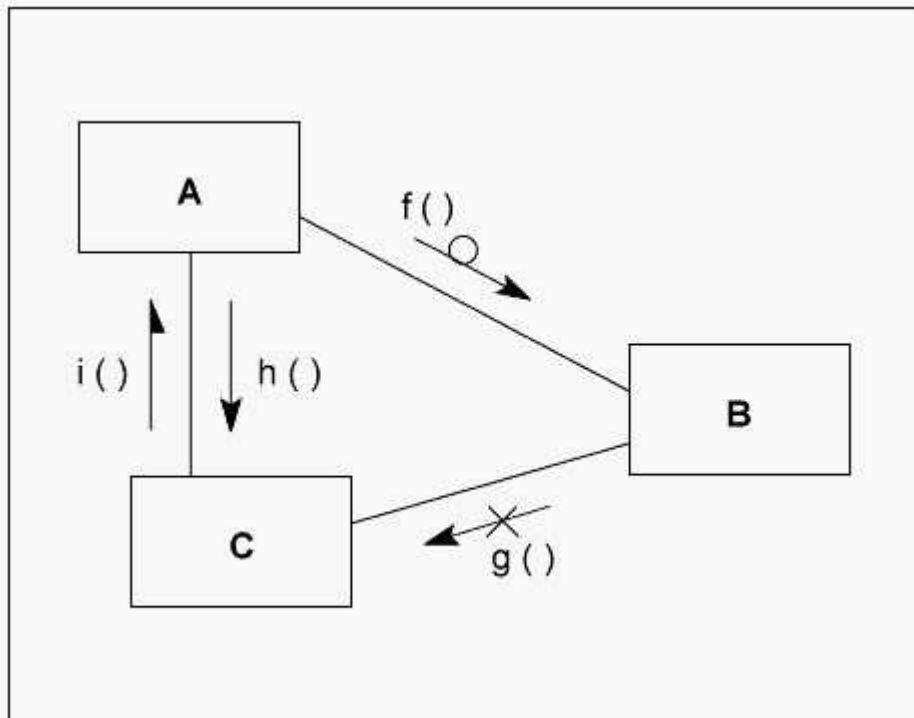
A.True

B.False

**Correct Answers: A**

21: Click the Exhibit button below.

What adornment in this figure represents time-out messaging?



A.f()

B.g()

C.h()

D.i()

**Correct Answers: A**

22: Semantically, collaboration diagrams can contain\_\_\_\_\_compared to sequence diagrams?

A.More information

B.Less information

C.The same information

**Correct Answers: C**