



**Vendor:** Juniper

**Exam Code:** JN0-360

**Exam Name:** Service Provider, Specialist (JNCIS-SP)

**Version:** DEMO

### QUESTION 1

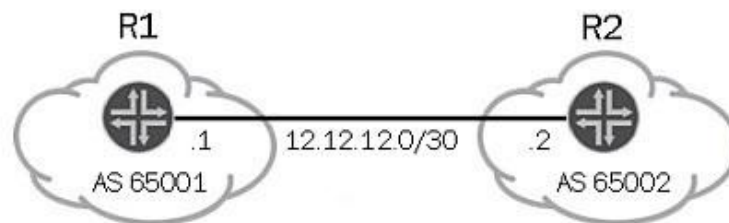
Which OSPF LSA type is sent from the ABR to describe an ASBR that is in an area to which it is connected?

- A. Type 7
- B. Type 5
- C. Type 4
- D. Type 3

Answer: C

### QUESTION 2

Click the Exhibit button. You are asked to configure a new external BGP peering. You have configured BGP on R1 as shown in the exhibit, however the BGP peering remains in Active state. Which additional configuration is required on R1 to establish the BGP peering?



```
routing-options {
  autonomous-system 65001;
}
protocols {
  bgp {
    local-as 65021;
    group external {
      peer-as 65002;
      neighbor 12.12.12.2;
    }
  }
}
```

```
routing-options {
  autonomous-system 65002;
}
protocols {
  bgp {
    group external {
      type external;
      local-address 12.12.12.2;
      peer-as 65001;
      neighbor 12.12.12.1;
    }
  }
}
```

- A. Configure the local-address.
- B. Configure the BGP type as external.
- C. Remove the local-as statement.
- D. Remove the autonomous-system statement.

Answer: C

### QUESTION 3

Which OSPF adjacency state is reached when a hello packet has been sent, but bidirectional communication has not been established?

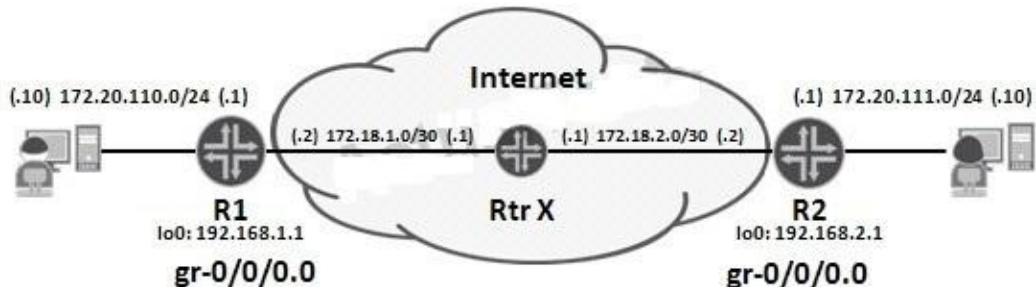
- A. Down
- B. Init

- C. 2-way
- D. ExStart

**Answer: B**

**QUESTION 4**

Based on the exhibit, which configuration will permit end-to-end routing through the GRE tunnel for R1?



- A. [edit]  
user@R1# show routing-options static  
route 12.168.2.1/32 next-hop gr-0/0/0.0;  
route 172.20.111.0/24 next-hop 12.168.1.1;
- B. [edit]  
user@R1# show routing-options static  
route 12.168.2.1/32 next-hop gr-0/0/0.0;  
route 172.20.111.0/24 next-hop 172..1.1;
- C. [edit]  
user@R1# show routing-options static  
route 12.168.2.1/32 next-hop 172..1.1;  
route 172.20.111.0/24 next-hop gr-0/0/0.0;
- D. [edit]  
user@R1# show routing-options static  
route 12.168.2.1/32 next-hop 172..2.2;  
route 172.20.111.0/24 next-hop 172..1.1;

**Answer: C**

**QUESTION 5**

Which two OSPF areas allow external routes? (Choose two.)

- A. backbone area
- B. not-so-stubby area
- C. stub area
- D. totally stubby area

**Answer: AB**

**QUESTION 6**

Which LSA packet types are originated only by an OSPF ABR router?

- A. Type 2 and Type 3
- B. Type 3 and Type 4
- C. Type 5 and Type 6
- D. Type 6 and Type 7

**Answer: B**

**QUESTION 7**

In an OSPF environment, which two configuration parameters are used to determine which router is the DR? (Choose two.)

- A. the router with the highest priority
- B. the router with the lowest priority
- C. the router with the highest RID
- D. the router with the lowest RID

**Answer: AC**

**QUESTION 8**

You have entered the show ospf route command and see routes with a metric type of EXT2. What does this indicate?

- A. These routes are OSPF interarea routes.
- B. These routes have been redistributed into OSPF and are using a Type 2 metric.
- C. These routes are preferred over the same routes with an EXT1 metric.
- D. These routes are OSPF intra-area routes.

**Answer: B**

**QUESTION 9**

You want to verify the frequency and type of SPF calculations on your Junos device. Which command displays this information?

- A. show ospf database | match log
- B. show spf log
- C. show ospf log
- D. show ospf statistics

**Answer: C**

**QUESTION 10**

You are troubleshooting an OSPF adjacency that is stuck in the ExStart state. What would be the correct step to resolve the problem?

- A. Look for a mismatched IP subnet or mask.
- B. Determine whether the neighbor is a DR-Other.

- C. Determine whether the hello and dead intervals are the same on both sides.
- D. Review the MTU settings to ensure that they match.

**Answer: D**

#### **QUESTION 11**

You are asked to redistribute routes into OSPF.  
Which action accomplishes this task?

- A. Create a redistribution policy and apply it as an export policy under the [edit protocols ospf area] hierarchy.
- B. Create a redistribution policy and apply it as an import policy in the [edit protocols ospf] hierarchy.
- C. Create a redistribution policy and apply it as an import or an export policy in the [edit protocols ospf] hierarchy.
- D. Create a redistribution policy and apply it as an export policy in the [edit protocols ospf] hierarchy.

**Answer: D**

#### **QUESTION 12**

You are configuring OSPF on a Junos device; however, you have not configured a router ID.  
What is the default behavior in this situation?

- A. If the loopback is configured with a 127/8 address, it will be used.
- B. If the loopback is not configured, it will use the interface with the highest IP address.
- C. If the loopback is configured and does not have a usable address, the IP address associated with the first hardware interface is used.
- D. If you configure a dedicated management address and include that interface in OSPF, it will be used as the router ID.

**Answer: C**

#### **QUESTION 13**

Which two statements correctly describe IS-IS adjacencies? (Choose two.)

- A. Level 1 adjacencies can form in the same (intra) area only.
- B. Level 2 adjacencies are formed between (inter) areas only.
- C. Level 2 adjacencies can be established either interarea or intra-area.
- D. Level 2 adjacencies can form within the same (intra) area only.

**Answer: AC**

#### **QUESTION 14**

Which IS-IS PDU is used to request a retransmission of a missing link-state packet?

- A. the complete sequence number PDU
- B. the partial sequence number PDU
- C. a hello PDU with a request PDU TLV specifying the missing LSP
- D. a hello PDU with a refresh PDU TLV requesting all LSPs

**Answer: B**



## Thank You for Trying Our Product

### PassLeader Certification Exam Features:

- ★ More than **99,900** Satisfied Customers Worldwide.
- ★ Average **99.9%** Success Rate.
- ★ **Free Update** to match latest and real exam scenarios.
- ★ **Instant Download** Access! No Setup required.
- ★ Questions & Answers are downloadable in **PDF** format and **VCE** test engine format.
- ★ Multi-Platform capabilities - **Windows, Laptop, Mac, Android, iPhone, iPod, iPad.**
- ★ **100%** Guaranteed Success or **100%** Money Back Guarantee.
- ★ **Fast**, helpful support **24x7**.



View list of all certification exams: <http://www.passleader.com/all-products.html>



Microsoft



ORACLE



CITRIX



JUNIPER  
NETWORKS



EMC<sup>2</sup>  
where information lives<sup>®</sup>

**10% Discount Coupon Code: STNAR2014**