



**Vendor:** Microsoft

**Exam Code:** 70-620

**Exam Name:** TS: Configuring Microsoft Windows Vista  
Client

**Version:** DEMO

### QUESTION 1

You need to configure Microsoft Windows Fax and Scan to send and receive faxes. What should you do?

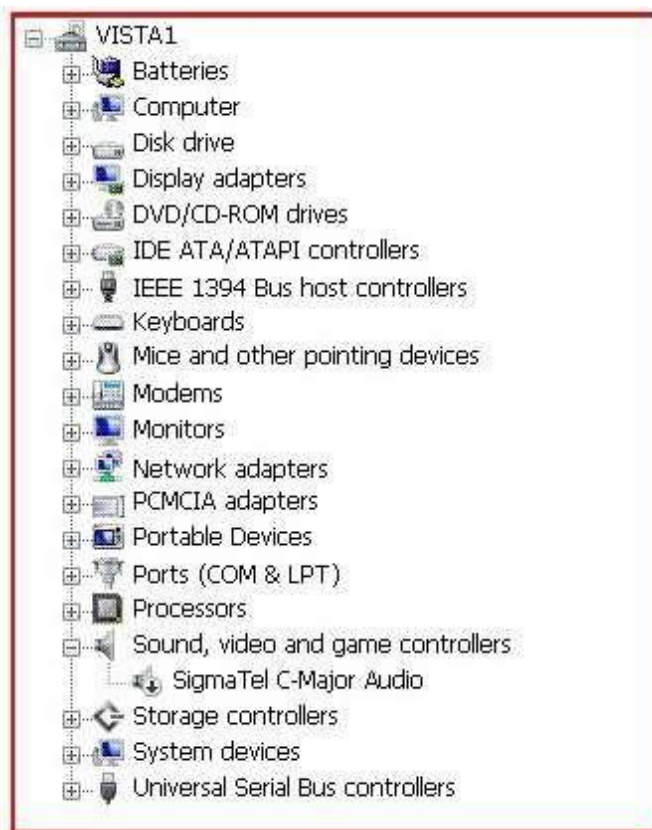
- A. Create a new fax account.
- B. Configure the fax settings to require manual receipt of faxes.
- C. Configure the fax security settings to permit Send and Receive.
- D. Configure the Transmitting Subscriber ID (TSID) of the fax with the correct phone number.

**Answer: A**

### QUESTION 2

Your computer fails to produce any audio output. The Device Manager management console is as shown in the following exhibit. (Click the Exhibit button.)

You need to receive audio output from your computer. What should you do?



- A. Enable the audio hardware.
- B. Initiate a Microsoft Windows Update scan.
- C. Update the driver for the audio hardware.
- D. Download and run the latest installation program for the audio hardware from the manufacturer.

**Answer: A**

### QUESTION 3

You install Windows Vista on a computer for a user who is visually impaired.  
You need to configure a High Contrast color scheme on the computer.  
What should you do?

- A. Open the Control Panel and start Color Management.
- B. Open the Control Panel and start Ease of Access Center.
- C. Right-click the desktop, click Personalize, and click Theme.
- D. Right-click the desktop, click Personalize, and click Display Settings.

**Answer: B**

### QUESTION 4

You need to verify whether your computer can obtain all of the latest operating system updates. What should you do?

- A. Confirm that your computer has a Microsoft Windows Experience Index base score above 3.0.
- B. Run Microsoft Windows Vista Upgrade Advisor.
- C. Configure Windows Defender to detect updates before scanning.
- D. Validate your Windows installation from the Microsoft Windows Genuine Advantage Web page.

**Answer: D**

### QUESTION 5

Your computer runs Microsoft Windows 2000 with Service Pack 3.  
You need to upgrade your computer to Microsoft Windows Vista.  
You must achieve this goal without reinstalling the applications.  
What should you do?

- A. First upgrade the computer to Microsoft Windows XP Professional, and then upgrade to Windows Vista.
- B. Install Microsoft Windows 2000 Professional Service Pack 4 on the computer.  
Start a Windows Vista upgrade from an installation DVD.
- C. Install Windows Vista into a separate partition. Use the Windows Easy Transfer wizard to upgrade your settings to the Windows Vista operating system.
- D. Copy your user profile to a removable media.  
Perform a clean installation of Windows Vista.  
Copy your user profile to the C:\Users directory.

**Answer: A**

### QUESTION 6

You have an application that is incompatible with Windows Aero.  
You need to ensure that Windows Aero is automatically disabled when you run the application.  
What should you do?

- A. Run the application as a standard user.
- B. Configure the appearance settings to enable transparency.
- C. From the applications compatibility settings, disable desktop composition.
- D. Assign your user account the read and execute permission on the applications executable file.

**Answer: C**

**QUESTION 7**

You install Microsoft Windows Vista on a new computer that is not connected to the Internet. After you log on, you receive a warning message about an unknown device.

You need to prevent the display of the warning message until you download an available hardware driver.

What are the two possible ways to achieve this goal? (Each correct answer presents a complete solution. Choose two.)

- A. Disable the device.
- B. Uninstall the device.
- C. Select the Ask me again later option from the warning message details.
- D. Select the Dont show this message again for this device option from the warning message details.

**Answer: AD**

**QUESTION 8**

You configure a subscription to a Really Simple Syndication (RSS) feed that often includes large videos.

You need to minimize delay while watching the videos.

What should you do?

- A. Configure the RSS feed to download attached files.
- B. Configure the RSS feed to retain the most recent items.
- C. Enable the Turn on feed reading view option of the RSS feed.
- D. Enable the Automatically mark feed as read when reading a feed option of the RSS feed.

**Answer: A**

**QUESTION 9**

Your mobile device runs the latest version of the Microsoft Windows Mobile operating system.

Your mobile device supports the use of Bluetooth and Infrared (IR) for data synchronization.

You need to configure data synchronization on your computer to only use Bluetooth.

Which three actions should you perform? (Each correct answer presents a part of the solution. Choose three.)

- A. Clear the Allow USB connections check box.
- B. Select the Allow USB connections check box.
- C. Select the Bluetooth option from the drop down list.
- D. Clear the Allow connections to one of the following check box.
- E. Select the Allow connections to one of the following check box.
- F. Install the latest version of Microsoft ActiveSync on the computer and perform an initial sync.

**Answer: ACE**

**QUESTION 10**

You need to ensure that when you tap specific areas on your Microsoft Windows Tablet PC, only those areas respond.

What should you do?

- A. Calibrate the Windows Tablet PC.
- B. Change the Handedness settings of your Windows Tablet PC.
- C. Choose the order in which your screen rotates in the Orientation Sequence Settings dialog box.
- D. Select the Use the personalized recognizer (recommended) check box in the Windows Tablet PC settings.

**Answer: A**

#### **QUESTION 11**

When you connect an external monitor to your portable computer, the same image appears on both monitors.

You need to drag a window from one monitor to the other.

What should you do?

- A. Change the display setting to extend the desktop.
- B. In the Microsoft Windows Mobility Center window, turn on the Presentation Settings feature.
- C. Configure the external monitor as the primary display and the built-in monitor as the secondary display.
- D. Change the secondary display resolution settings to make them equal to or less than the primary display resolution settings.

**Answer: A**

#### **QUESTION 12**

You need to configure the power settings of your portable computer so that the display turns off when it is inactive and running on battery power.

You also need to ensure that the power settings of the hard disk remain unaffected.

What should you do?

- A. Change the advanced power settings of the Balanced power plan.
- B. Configure the portable computer to use the Power saver power plan.
- C. Configure the portable computer to use the High performance power plan.
- D. Restore the Power Saver power plan to the default settings.

**Answer: A**

#### **QUESTION 13**

You need to back up the existing data on a computer before you install a new application.

You also need to ensure that you are able to recover individual user files that are replaced or deleted during the installation.

What should you do?

- A. Create a System Restore point.
- B. Perform an Automated System Recovery (ASR) backup and restore.
- C. In the Backup and Restore Center window, click the Back up files button.
- D. In the Backup and Restore Center window, click the Back up computer button.

**Answer: C**

#### QUESTION 14

You perform a clean installation of Microsoft Windows Vista on the first partition. Then, you install Microsoft Windows XP Professional on the second partition of the same machine.

You are able to log on to Windows XP Professional but do not have the option to boot to Windows Vista.

You need to be able to dual boot the computer.

What should you do?

- A. Run the bootcfg.exe application with the /fastdetect option.
- B. Perform a clean installation of Windows Vista on the first partition.
- C. Run the msconfig.exe application and change the order of the operating systems in the boot.ini file.
- D. Edit the boot.ini file. Add the following line:Multi(0)Disk(0)Rdisk(0)Partition(1)\Microsoft Windows

**Answer: B**

#### QUESTION 15

Your computer is unable to access external names or IP addresses.

You need to connect to external Internet resources.

What should you do first?

- A. In a command window, type the ipconfig /displaydns command.
- B. In the Network and Sharing Center window, click the View Full Map link.
- C. In the Network and Sharing Center window, click the Diagnose and repair link.
- D. Configure the DNS server by using an IP address provided by your Internet Service Provider (ISP).

**Answer: C**

#### QUESTION 16

You need to use the Event Viewer window to review the event logs for only critical and error events.

You also need the maximum amount of detail for each of these events.

What should you do?

- A. Edit the filter for the Administrative Events view.
- B. Create a custom view.  
Enable the Critical, Error, and Information level events. Select all logs.
- C. Create a custom view.  
Select the Critical checkbox, Error checkbox, and Verbose checkbox.  
Select all logs.
- D. Search for the Critical or Error string by using the Find option of the Administrative Events view.

**Answer: C**

#### QUESTION 17

You have a computer that runs Windows Vista.

You connect to your companys network by using a virtual private network (VPN) connection.

You notice that when you establish the VPN connection, you are unable to access Internet Web sites. When you disconnect the VPN connection, you can access Internet Web sites.

You need to access Internet Web sites while you are connected to the VPN connection.

What should you do?

- A. Configure the VPN connection to use PPTP only.
- B. Configure the VPN connection to use L2TP IPsec only.
- C. From the Internet Protocol Version 4 (TCP/IPv4) properties of the local area connection, disable the Automatic metric setting.
- D. From the Internet Protocol Version 4 (TCP/IPv4) properties of the VPN connection, disable the Use default gateway on remote network setting.

**Answer: D**

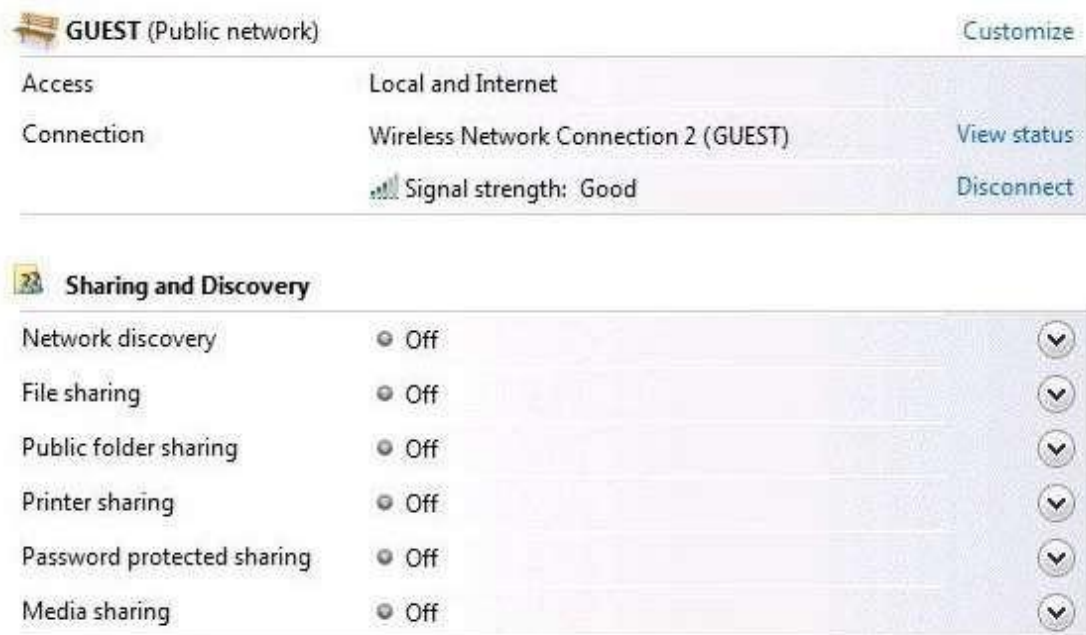
#### QUESTION 18

You have a computer that runs Windows Vista Ultimate.

You view the Network and Sharing Center settings as shown in the exhibit. (Click the Exhibit button.)

You need to enable media sharing on your computer.

What should you do first?



- A. Enable Network Discovery.
- B. Create a new connection.
- C. Enable Public folder sharing.
- D. Change your network location to Private.

**Answer: D**

#### QUESTION 19

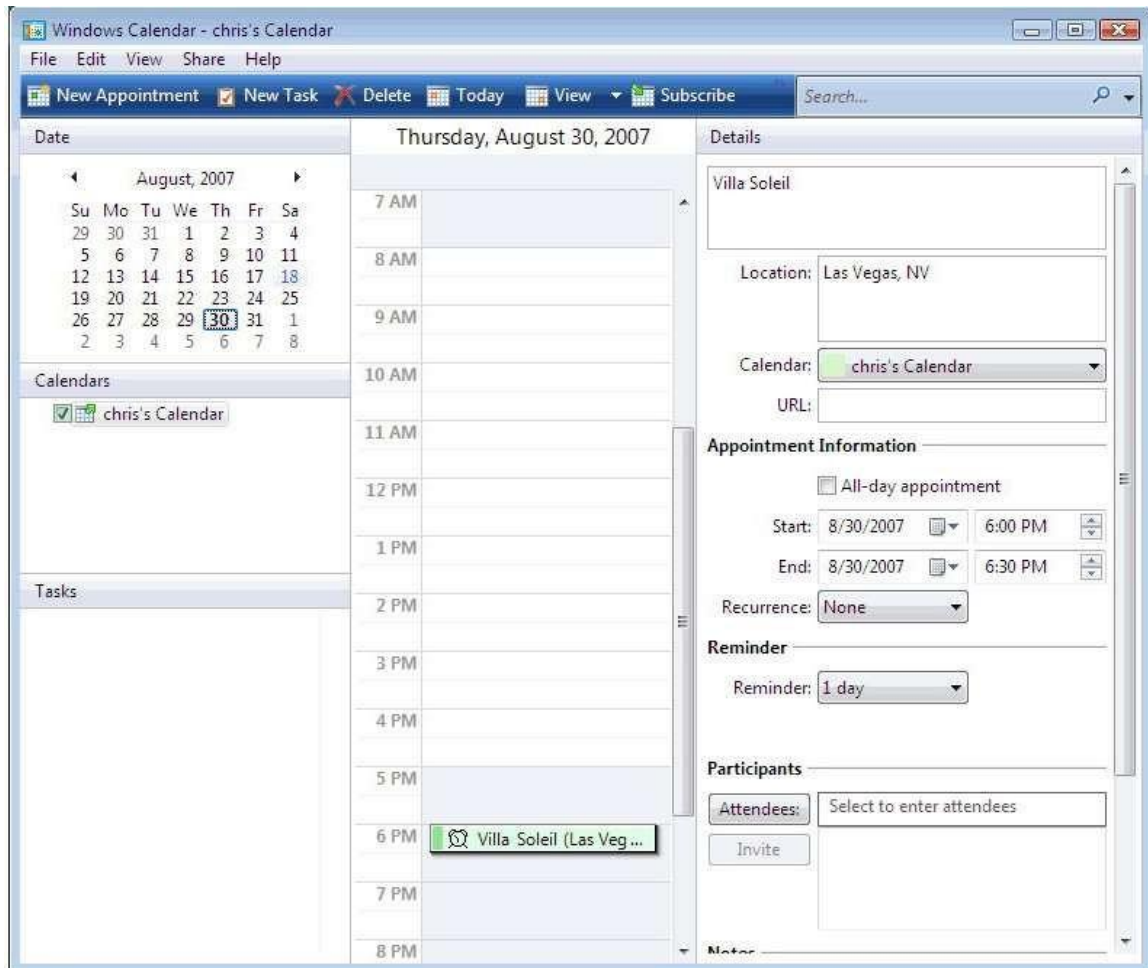
You have a computer that runs Windows Vista.

You publish your Windows Calendar to C:\Calendars\mycalendar.ics.

A user subscribes to your published calendar.

You create a new appointment.

The user reports that the appointment only appears on his calendar 24 hours later.  
You need to reduce the amount of time it takes for the appointment to appear in the users view of the published calendar.  
What should you do?



- A. Modify the Attendees list.
- B. Modify the appointment details.
- C. Publish your calendar to a URL.
- D. Modify the users subscription options.

**Answer: D**

#### QUESTION 20

A co-worker uses a gadget from the Windows Sidebar feature on their computer.  
You examine your computer and find that the gadget is not on the list of available gadgets.  
You need to add this gadget to the Windows Sidebar feature on your computer.  
What should you do?

- A. Download and install the gadget file.
- B. Download the gadget file and copy the file to C:\Windows\System32.
- C. Instruct the co-worker to send the gadget file via e-mail and copy the file to C:\Program Files.



- D. Instruct the co-worker to send the gadget file via e-mail.  
Drag and drop the gadget file to the Windows Sidebar feature.

**Answer:** A

## Thank You for Trying Our Product

### PassLeader Certification Exam Features:

- ★ More than **99,900** Satisfied Customers Worldwide.
- ★ Average **99.9%** Success Rate.
- ★ **Free Update** to match latest and real exam scenarios.
- ★ **Instant Download** Access! No Setup required.
- ★ Questions & Answers are downloadable in **PDF** format and **VCE** test engine format.
- ★ Multi-Platform capabilities - **Windows, Laptop, Mac, Android, iPhone, iPod, iPad**.
- ★ **100%** Guaranteed Success or **100%** Money Back Guarantee.
- ★ **Fast**, helpful support **24x7**.



View list of all certification exams: <http://www.passleader.com/all-products.html>



Microsoft



ORACLE



CITRIX



JUNIPER  
NETWORKS



EMC<sup>2</sup>  
where information lives<sup>®</sup>

**10% Discount Coupon Code: STNAR2014**