



Vendor: Microsoft

Exam Code: 70-158

Exam Name: Forefront Identity Manager 2010, Configuring

Version: DEMO

QUESTION 1

You administer a Forefront Identity Management (FIM) 2010 server in your company network. You install the FIM Service and Portal Language Pack. A new office is opened in Japan. Employees in the Japan office report that regional settings in only English, Chinese (Simplified), and Chinese (Traditional) are available in the FIM Portal.

You need to ensure that regional settings in only English and Japanese are available for the Japan office in the FIM Portal.

What should you do?

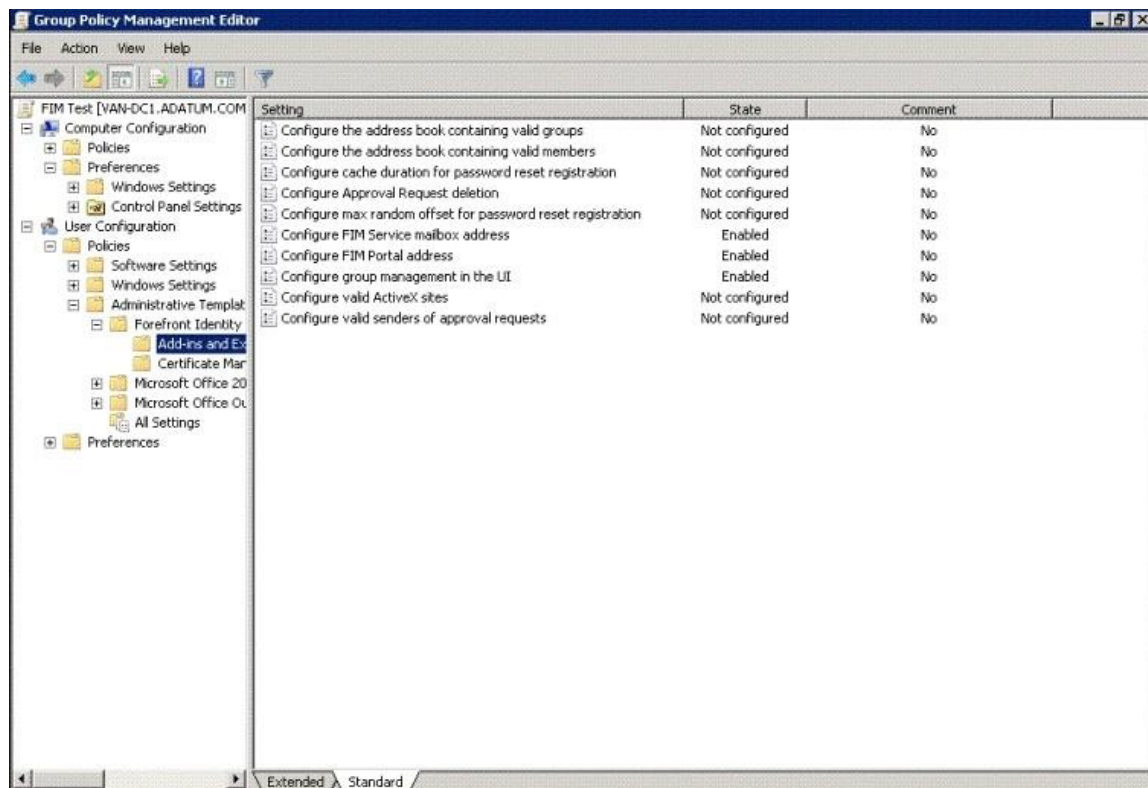
- A. Load a backup of the FIM Service database made prior to the installation of the FIM Service and Portal Language Pack.
Rerun the setup for the FIM Service and Portal Language Pack.
- B. Load a backup of the FIM Synchronization Service database made prior to the installation of the FIM Service and Portal Language Pack.
Rerun the setup for the FIM Service and Portal Language Pack.
- C. From the FIM Splash Screen, download and run Setup.exe for the FIM Service and Portal Language Pack.
- D. On the Custom Setup page, select the appropriate languages that must be installed.

Answer: A

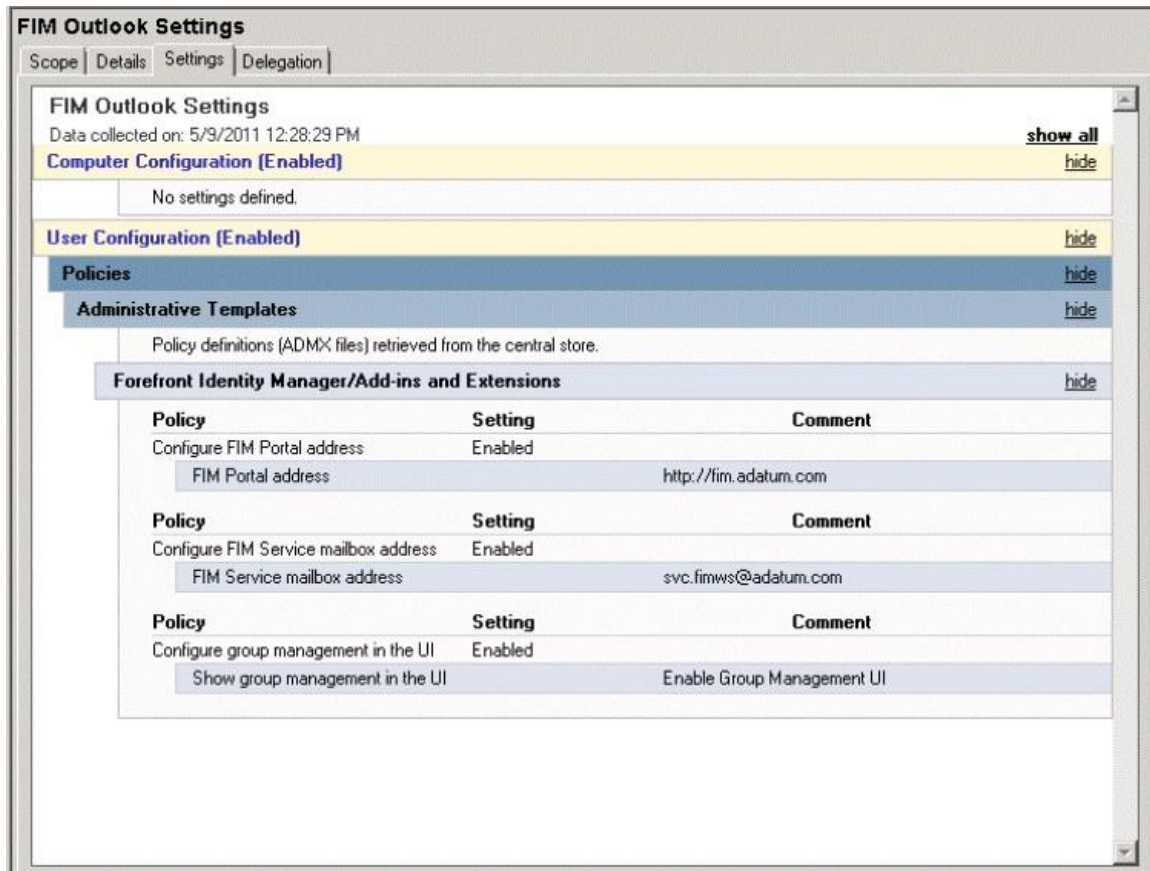
QUESTION 2

Your company network includes Forefront Identity Manager (FIM) 2010.

You manage the FIM 2010 Add-ins and Extensions through a Group Policy Object (GPO) configured according to the two exhibits. (Click the Exhibit button.)



(Click the Exhibit button.)



You need to configure the GPO policy settings to meet the following requirements:

- Users must be able to register for Password Reset and Registration.
- The Approve and Reject buttons must appear in the Microsoft Outlook client and approvals must be performed by using the button.

What should you do? (Choose all that apply.)

- Add fim.adatum.com to the Configure valid ActiveX sites policy setting.
- Add the group address book to the Configure the address book containing valid groups policy setting.
- Add the member address book to the Configure the address book containing valid members policy setting.
- Add the address or addresses of FIM administrators to the Configure valid senders of approval requests policy setting.
- Add the address or addresses of mailboxes that host the FIM web service to the Configure valid senders of approval requests policy setting.

Answer: AE

QUESTION 3

Your company network includes Forefront Identity Manager (FIM) 2010.

You configure the FIM Portal to use detailed error pages.

A backup of FIM is performed daily. After a restore of the FIM Service, you discover that the detailed error pages are not displayed for the FIM Portal.

You need to ensure that when you perform a restore of the FIM Service, the detailed error pages are displayed.

What should you do?

- A. Include the web.config file in the daily backup of FIM.
- B. From an elevated command prompt, run iisreset.exe.
- C. From the FIM Portal, edit the Portal Configuration Extended Attributes page.
- D. Edit the web.config file and include <customErrors mode="On"/> in the file.

Answer: A

QUESTION 4

Drag and Drop Question

Your company network includes Forefront Identity Manager (FIM) 2010 and Microsoft SQL Server 2008. A backup of FIM Synchronization Service is performed daily.

The FIM Synchronization Service fails.

You restore the FIM 2010 database to the SQL server.

You need to restore the FIM Synchronization Service.

What should you do? (To answer, move the appropriate actions from the list of actions to the answer area and arrange them in the correct order.)

Stop the FIM Service.

Stop the FIM Synchronization Service.

Start the FIM Synchronization Service.

Provide the encryption keys that were exported during the backup process.

Install the FIM 2010 Synchronization Service on a new computer in the same Active Directory domain.

Answer:

Stop the FIM Service.

Stop the FIM Synchronization Service.

Start the FIM Synchronization Service.

Provide the encryption keys that were exported during the backup process.

Install the FIM 2010 Synchronization Service on a new computer in the same Active Directory domain.

Install the FIM 2010 Synchronization Service on a new computer in the same Active Directory domain.

Provide the encryption keys that were exported during the backup process.

Start the FIM Synchronization Service.

QUESTION 5

You administer a Forefront Identity Management (FIM) 2010 server in your company network. The server that runs the FIM Portal fails. You begin the restore process. However, you receive an error when you stop the SQL Server Agent service. You need to be able to continue the restore process. What should you do?

- A. Run iisreset.exe.
- B. Close the FIM Portal.
- C. Stop the FIM Synchronization service.
- D. Ensure that no stored procedure runs in FIM.

Answer: D

QUESTION 6

You install a Forefront Identity Management (FIM) 2010 server on a member server of an Active Directory Domain Services (AD DS) domain. You configure synchronization between the domain and FIM server. A user named User1 must modify other users' attributes and Management Policy Rules (MPRs) settings through the FIM Portal. You need to delegate the required permissions to User1. What should you do?

- A. Create and configure a new authorization workflow.
- B. Add the user account of User1 to the Administrators set.
- C. Add the user account of User1 to the FIMSyncAdmins group in the domain.
- D. Add the user account of User1 to the local Administrators group on the FIM server.

Answer: B

QUESTION 7

You administer a Forefront Identity Management (FIM) 2010 server in your company network. All user accounts are members of an Active Directory Domain Services (AD DS) domain. You configure user accounts synchronization between the FIM server and domain. You provide read access to the domain users to the FIM Portal. You need to ensure that users can update only their own personal profile through the FIM Portal. What should you do?

- A. Add All People to the Specific Set of Requestors list of the User management: User can read selected attributes of their own Management Policy Rule.
- B. Create a new Request Management Policy Rule (MPR).
Select the Modify a single-valued attribute operation in the MPR.
Add All People to the Specific Set of Requestors list.
Add All Requests to both Target Resource Definition lists.
- C. Create a new Request Management Policy Rule (MPR).
Select the Modify a single-valued attribute operation in the MPR.
Add Resource ID to the Requestors Relative to Resource list.
Add All People to both Target Resource Definition lists.
- D. Copy settings of the User management:
User can read selected attributes of their own Management Policy Rule (MPR) as a new MPR.
Select the Modify a single-valued attribute operation in the MPR.
Add All People to both Target Resource Definition lists.

Answer: C

QUESTION 8

You administer a Forefront Identity Management (FIM) 2010 server in your company network. All users in the network are members of an Active Directory domain. You configure user accounts synchronization between the FIM server and domain. You need to ensure that service desk personnel can modify properties of domain user accounts by using the FIM Portal. What should you do? (Each correct answer presents part of the solution. Choose all that apply.)

- A. Create a new set for the user accounts of service desk personnel.
- B. Create and configure a new Management Policy Rule.
- C. Add a set to a Management Policy Rule.
- D. Add a workflow to a Management Policy Rule.
- E. Create a new authorization workflow.
- F. Create a new authentication workflow.

Answer: ABC

QUESTION 9

Your company network uses Forefront Identity Manager (FIM) 2010 to synchronize user accounts in an Active Directory Domain Services (AD DS) domain. You are implementing Password Change Notification Service (PCNS). You need to configure the AD Management Agent (AD MA) for password synchronization with PCNS. You also need to ensure that the HR Data MA receives password change notifications. What should you do? (Choose all that apply.)

- A. Select the .dll file of the HR MA extension as the extension name.
- B. Select the .dll file of the metaverse extension as the extension name.
- C. Enable Password Management in the extensions of the HR Data MA.
- D. Set the Password Synchronization target MA to HR Data in the AD MA.
- E. Enable password synchronization in Synchronization Service Manager.
- F. Create the HR Data MA import attribute flow for the resetPassword metaverse attribute.
- G. Configure the Directory Partition of the AD MA to Enable this partition as a password synchronization source.

Answer: ACDEG

QUESTION 10

You use Forefront Identity Manager (FIM) 2010 in your company network. After you perform the migration of FIM from the test environment to the production environment, you discover that requests for custom workflows fail. You need to ensure that custom workflows perform properly in the production environment. What should you do?

- A. Enable firewall access for Port 5725.
- B. Delete custom DLLs in the production environment.
- C. Implement the IActivitySettingsPart interface in Microsoft Visual Studio.

- D. Move custom DLLs from the test environment to the production environment.
- E. Run the CommitChanges.ps1 PowerShell script in the production environment.

Answer: D

QUESTION 11

You administer a Forefront Identity Management (FIM) 2010 server in your company network. Resource Control Display Configuration (RCDC) XML files are used to control end-user UI elements. End users report that incorrect integer values appear in read-only Numeric Box elements. Some users can edit this field.

You need to ensure that users can submit valid form data by using the Numeric Box element. What should you do?

- A. Include the <xsd:attribute ref="my:AutoValidate"/> line within the RCDC Panel element.
- B. Set the MinValue property on the UocNumericBox element.
- C. Set the DefaultValue property to the correct integer value on the UocNumericBox element.
- D. Set the Value property to the correct integer value on the UocNumericBox element.

Answer: C

QUESTION 12

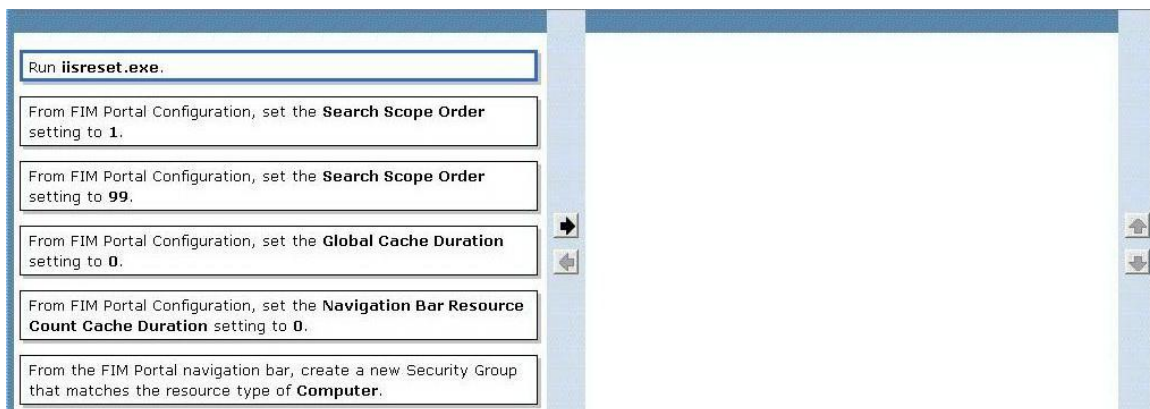
Drag and Drop Question

Your company network contains Forefront Identity Manager (FIM) 2010.

You need to create a new search scope for All computers in the FIM Portal Administrator.

You also need to ensure that the search scope appears at the top of the list of search scopes.

What should you do? (To answer, move the appropriate action from the list of actions to the answer area and arrange them in the correct order.)



Answer:



QUESTION 13

You deploy Forefront Identity Manager (FIM) 2010 in your company network. You need to allow non-administrators to view Security Groups in the FIM Portal navigation bar. What should you do?

- A. From Navigation Bar Resources, click Security Groups and set Order to 0.
- B. From Navigation Bar Resources, click Security Groups and set Parent Order to 0.
- C. From Navigation Bar Resources, click Security Groups and set Usage Keyword to BasicUI.
- D. Create a new Management Policy Rule that provides the read permission to non-administrators to the All Security Groups resource.

Answer: C

QUESTION 14

You administer a Forefront Identity Manager (FIM) 2010 server in your company network. You need to add the company logo to the top of the FIM Password Reset Portal page. What should you do?

- A. From FIM Portal Configuration, on the Extended Attributes tab, set the Branding Left Image attribute to the logo file path.
- B. From FIM Portal Configuration, on the Extended Attributes tab, set the Branding Center Text attribute to the logo file path.
- C. In the web.config file, modify the <add key="PasswordPortalBrandingBarCenterText" value=""/>line.
- D. In the web.config file, modify the <add key="PasswordPortalBrandingBarRightImageUrl" value="~/_layouts/images/MSILM2/banner.png"/>line.

Answer: D

Thank You for Trying Our Product

PassLeader Certification Exam Features:

- ★ More than **99,900** Satisfied Customers Worldwide.
- ★ Average **99.9%** Success Rate.
- ★ **Free Update** to match latest and real exam scenarios.
- ★ **Instant Download** Access! No Setup required.
- ★ Questions & Answers are downloadable in **PDF** format and **VCE** test engine format.
- ★ Multi-Platform capabilities - **Windows, Laptop, Mac, Android, iPhone, iPod, iPad**.
- ★ **100%** Guaranteed Success or **100%** Money Back Guarantee.
- ★ **Fast**, helpful support **24x7**.



View list of all certification exams: <http://www.passleader.com/all-products.html>



10% Discount Coupon Code: STNAR2014