



**Vendor:** Microsoft

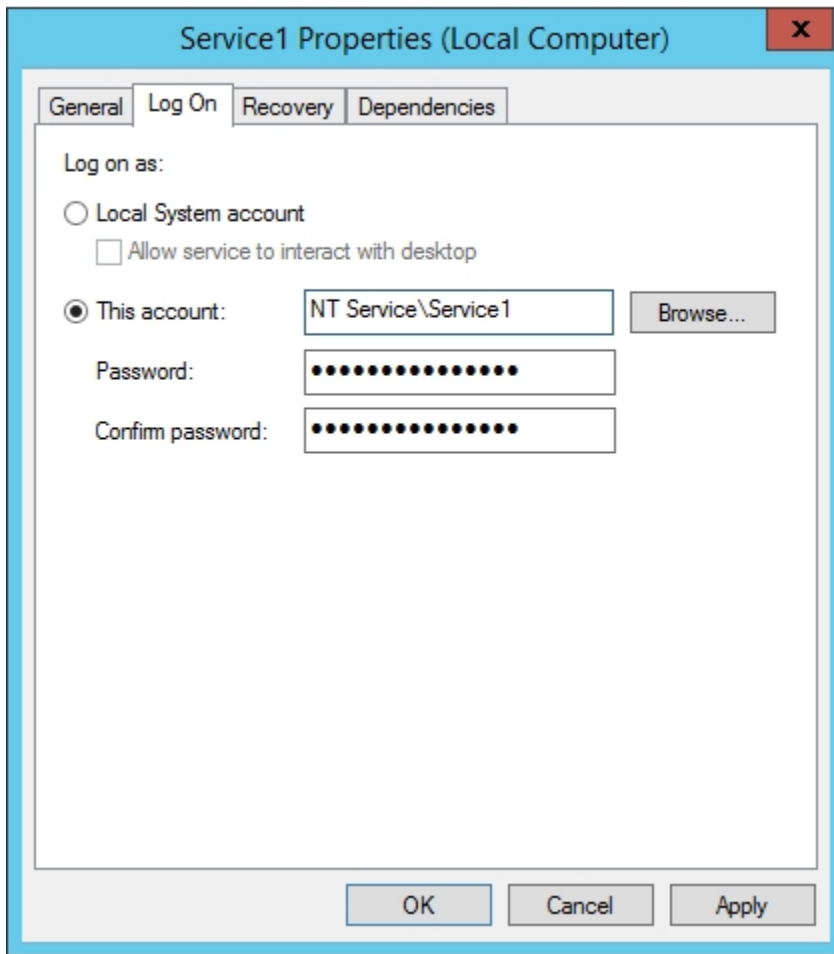
**Exam Code:** 70-411

**Exam Name:** Administering Windows Server 2012 R2 Exam

**Version:** DEMO

**QUESTION 1**

You have a server named Server1 that is a member of a domain named contoso.com. You view the properties of a service on Server1 as shown in the graphic.



Use the drop-down menus to select the answer choice that completes each statement.  
NOTE: Each correct selection is worth one point.

Service1 is configured to use [answer choice].

▼  
a local user account  
a managed service account  
a virtual account

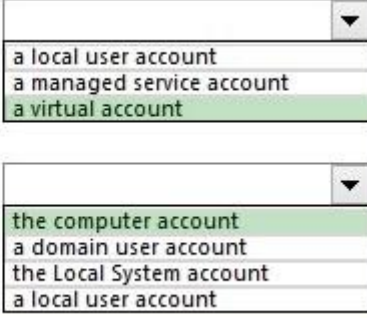
When accessing network resources, Service1 will use the identity of [answer choice].

▼  
the computer account  
a domain user account  
the Local System account  
a local user account

**Answer:**

Service1 is configured to use [answer choice].

When accessing network resources, Service1 will use the identity of [answer choice].



The image shows two screenshots of a Windows service configuration dialog. The first screenshot shows a dropdown menu with three options: 'a local user account', 'a managed service account', and 'a virtual account'. The 'a virtual account' option is highlighted in green. The second screenshot shows a dropdown menu with four options: 'the computer account', 'a domain user account', 'the Local System account', and 'a local user account'. The 'the computer account' option is highlighted in green.

**Explanation:**

Virtual accounts are "managed local accounts" that provide the following features to simplify service administration:

- No password management is required.
  - The ability to access the network with a computer identity in a domain environment.
- Virtual accounts require very little management. They cannot be created or deleted, nor do they require any password management.

You must be a member of the Administrators group on the local computer to perform the following procedures. To configure a service to use a virtual account:

- Click Start, point to Administrative Tools, and then click Services.
- In the details pane, right-click the service that you want to configure, and then click Properties.
- Click the Log On tab, click This account, and then type NT SERVICE\ServiceName. When you are finished, click OK.
- Restart the service for the change to take effect.

[https://technet.microsoft.com/en-us/library/dd548356%20\(v=WS.10\).aspx](https://technet.microsoft.com/en-us/library/dd548356%20(v=WS.10).aspx)

**QUESTION 2**

You have a Windows Server Update Services (WSUS) server named Server1. Server1 synchronizes from Microsoft Update.

You plan to deploy a new WSUS server named Server2. Server2 will synchronize updates

Server2 will be separated from Server1 by a firewall from Server1.

You need to identify which port must be open on the firewall so that Server2 can synchronize the updates.

Which port should you identify?

- A. 8530
- B. 3389
- C. 443
- D. 80

**Answer: A**

**Explanation:**

WSUS upstream and downstream servers will synchronize on the port configured by the WSUS Administrator. By default, these ports are configured as follows:

On WSUS 3.2 and earlier, port 80 for HTTP and 443 for HTTPS

On WSUS 6.2 and later (at least Windows Server 2012), port 8530 for HTTP and 8531 for HTTPS The firewall on the WSUS server must be configured to allow inbound traffic on these ports.

<https://technet.microsoft.com/en-us/library/hh852346.aspx>

**QUESTION 3**

A technician installs a new server that runs Windows Server 2012 R2. During the installation of Windows Server Update Services (WSUS) on the new server, the technician reports that on the Choose Languages page of the Windows Server Update Services Configuration Wizard, the only available language is English. The technician needs to download updates in French and English. What should you tell the network technician to do to ensure that the required updates are available?

- A. Complete the Windows Server Update Services Configuration Wizard, and then modify the update language on the server.
- B. Uninstall all instances of the Windows Internal Database.
- C. Change the update languages on the upstream server.
- D. Change the System Local of the server to French.

**Answer: C**

**Explanation:**

Configure upstream servers to synchronize updates in all languages that are required by downstream replica servers.

You will not be notified of needed updates in the unsynchronized languages.

The Choose Languages page of the WSUS Configuration Wizard allows you to get updates from all languages or from a subset of languages. Selecting a subset of languages saves disk space, but it is important to choose all the languages that are needed by all the downstream servers and client computers of a WSUS server.

Downstream servers and client computers will not receive all the updates they need if you have not selected all the necessary languages for the upstream server. Make sure you select all the languages that will be needed by all the client computers of all the downstream servers.

You should generally download updates in all languages on the root WSUS server that synchronizes to Microsoft Update. This selection guarantees that all downstream servers and client computers will receive updates in the languages that they require.

To choose update languages for a downstream server:

If the upstream server has been configured to download update files in a subset of languages: In the WSUS Configuration Wizard, click Download updates only in these languages (only languages marked with an asterisk are supported by the upstream server), and then select the languages for which you want updates.

[https://technet.microsoft.com/en-us/library/hh328568\(v=ws.10\).aspx](https://technet.microsoft.com/en-us/library/hh328568(v=ws.10).aspx)

**QUESTION 4**

Note: This question is part of a series of questions that use the same or similar answer choices.

An answer choice may be correct for more than one question in the series.

Each question is independent of the other questions in this series.

Information and details provided in a question apply only to that question.

Your network contains an Active Directory domain named contoso.com.

The domain contains more than 100 Group Policy objects (GPOs).

Currently, there are no enforced GPOs.

You have a GPO named GPO1 that is linked to the domain.

You need to configure GPO1 to apply settings to Group1 only.

What should you use?

- A. Dcgpofix
- B. Get-GPOReport
- C. Gpfixup
- D. Gpresult
- E. Gpedit. msc

- F. Import-GPO
- G. Restore-GPO
- H. Set-GPInheritance
- I. Set-GPLink
- J. Set-GPPermission
- K. Gpupdate
- L. Add-ADGroupMember

**Answer: C**

#### QUESTION 5

Your network contains one Active Directory forest named contoso.com. You create a starter Group Policy object (GPO) named Starter\_GPO1. From the Delegation tab of Starter\_GPO1, you add a group named GPO\_Admins and you assign the Edit settings permissions to the group. You create a new GPO named GPO1 from Starter\_GPO1. You need to identify which action can be performed by the members of the GPO Admins group. What should you identify?

- A. Modify the Delegation settings of Starter\_GPO1.
- B. Modify the Group Policy Preferences in Starter\_GPO1.
- C. Link a WMI filter to GPO1.
- D. Modify the Administrative Templates in GPO1.

**Answer: A**

#### Explanation:

Permission rights applied to starter GPO objects are relative to the starter GPO objects only; they are not inherited from actual GPOs created from starter GPOs.

B is wrong because Starter GPOs do not have preferences, only Administrative Template policy settings.

<https://technet.microsoft.com/en-us/library/cc753200.aspx>

#### QUESTION 6

Your network contains a Hyper-V host named Hyperv1. Hyperv1 runs Windows Server 2012 R2. Hyperv1 hosts four virtual machines named VM1, VM2, VM3, and VM4. All of the virtual machines run Windows Server 2008 R2. You need to view the amount of memory resources and processor resources that VM4 currently uses. Which tool should you use on Hyperv1?

- A. Resource Monitor
- B. Task Manager
- C. Hyper-V Manager
- D. Windows System Resource Manager (WSRM)

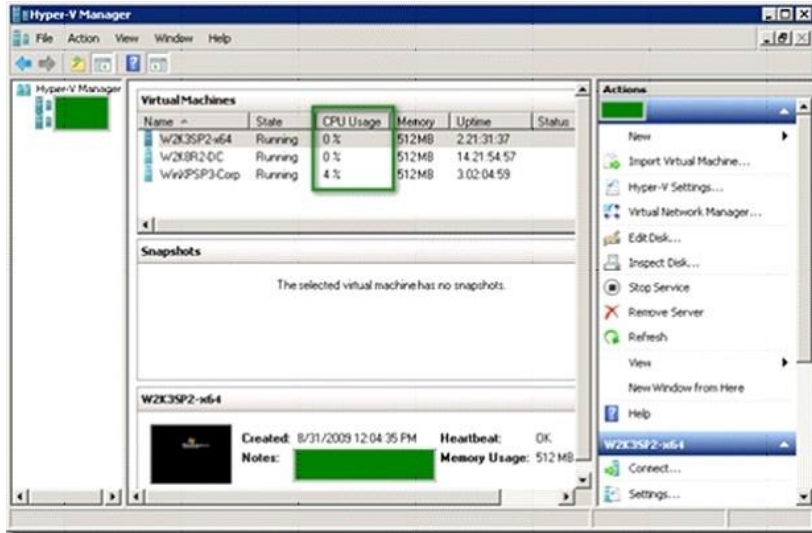
**Answer: C**

#### Explanation:

Hyper-V Performance Monitoring Tool

Know which resource is consuming more CPU. Find out if CPUs are running at full capacity or if they are being underutilized. Metrics tracked include Total CPU utilization, Guest CPU utilization, Hypervisor CPU utilization, idle CPU utilization, etc.

WSRM is deprecated starting with Windows Server 2012



### QUESTION 7

Your network contains a server named Server1 that has the Network Policy and Access Services server role installed. All of the network access servers forward connection requests to Server1. You create a new network policy on Server1. You need to ensure that the new policy applies only to connection requests from Microsoft RAS servers that are located on the 192.168.0.0/24 subnet. Which two configurations should you perform? (Each correct answer presents part of the solution. Choose two.)

- A. Set the MS-RAS Vendor ID condition to \$teelHead.
- B. Set the Called Station ID constraint to 192.168.0.
- C. Set the Client IP4 Address condition to 192.168.0.0/24.
- D. Set the MS-RAS Vendor ID condition to ^311\$.
- E. Set the Called Station ID constraint to 192.168.0.0/24.
- F. Set the Client IP4 Address condition to 192.168.0.

**Answer:** DF

**Explanation:**

D: MS-RAS-Vendor Matches "^311\$" ) The condition means that the policy applies only when the version of the RADIUS client is ^311\$, so subsequent settings in this policy apply only to RRAS machines.

F: Client IPv4 Address

Specifies the Internet Protocol (IP) version 4 address of the RADIUS client that forwarded the connection request to the NPS server.

### QUESTION 8

Your network contains three Network Policy Server (NPS) servers named NPS1, NPS2, and NPS3. NPS1 is configured as a RADIUS proxy that forwards connection requests to a remote RADIUS server group named Group1.

You need to ensure that NPS2 receives connection requests.

NPS3 must only receive connection requests if NPS2 is unavailable.

How should you configure Group1?

- A. Change the Weight of NPS2 to 10.
- B. Change the Weight of NPS3 to 10.

- C. Change the Priority of NPS2 to 10.
- D. Change the Priority of NPS3 to 10.

**Answer: D**

**Explanation:**

Priority specifies the order of importance of the RADIUS server to the NPS proxy server. Priority level must be assigned a value that is an integer, such as 1, 2, or 3. The lower the number, the higher priority the NPS proxy gives to the RADIUS server. For example, if the RADIUS server is assigned the highest priority of 1, the NPS proxy sends connection requests to the RADIUS server first; if servers with priority 1 are not available, NPS then sends connection requests to RADIUS servers with priority 2, and so on. You can assign the same priority to multiple RADIUS servers, and then use the Weight setting to load balance between them.

**QUESTION 9**

Your network contains an Active Directory domain named contoso.com. All domain controllers run Windows Server 2012 R2.

Administrators use client computers that run Windows 8 to perform all management tasks.

A central store is configured on a domain controller named DC1.

You have a custom administrative template file named App1.admx. App1.admx contains application settings for an application named Appl.

From a client computer named Computer1, you create a new Group Policy object (GPO) named GPO1.

You discover that the application settings for App1 fail to appear in GPO1.

You need to ensure that the App1 settings appear in all of the new GPOs that you create. What should you do?

- A. Copy App1.admx to \\Contoso.com\SYSTEM\Contoso.com\Policies\PolicyDefinitions\
- B. From the Default Domain Controllers Policy, add App1.admx to the Administrative Templates.
- C. From the Default Domain Policy, add App1.admx to the Administrative Templates
- D. Copy App1.admx to \\Contoso.com\SYSTEM\Contoso.com\StarterGPOs.

**Answer: A**

**QUESTION 10**

Your network contains two Active Directory domains named contoso.com and adatum.com. The contoso.com domain contains a server named Server1.contoso.com. The adatum.com domain contains a server named server2.adatum.com. Server1 and Server2 run Windows Server 2012 and have the DirectAccess and VPN (RRAS) role service installed. Server1 has the default network policies and the default connection request policies.

You need to configure Server1 to perform authentication and authorization of VPN connection requests to Server2. Only users who are members of Adatum\Group1 must be allowed to connect. Which two actions should you perform on Server1? (Each correct answer presents part of the solution. Choose two.)

- A. Network policies
- B. Connection request policies
- C. Create a network policy.
- D. Create a connection request policy.

**Answer: AD**

**Explanation:**

\* Connection request policies are sets of conditions and settings that allow network administrators

to designate which Remote Authentication Dial-In User Service (RADIUS) servers perform the authentication and authorization of connection requests that the server running Network Policy Server (NPS) receives from RADIUS clients. Connection request policies can be configured to designate which RADIUS servers are used for RADIUS accounting.

\* With connection request policies, you can use NPS as a RADIUS server or as a RADIUS proxy, based on factors such as the following:

- The time of day and day of the week
- The realm name in the connection request
- The type of connection being requested
- The IP address of the RADIUS client

#### QUESTION 11

Your network contains an Active Directory domain named contoso.com. The domain contains a server named NPS1 that has the Network Policy Server server role installed. All servers run Windows Server 2012 R2.

You install the Remote Access server role on 10 servers.

You need to ensure that all of the Remote Access servers use the same network policies.

Which two actions should you perform?

(Each correct answer presents part of the solution.

Choose two.)

- A. Configure each Remote Access server to use the Routing and Remote Access service (RRAS) to authenticate connection requests.
- B. On NPS1, create a remote RADIUS server group.  
Add all of the Remote Access servers to the remote RADIUS server group.
- C. On NPS1, create a new connection request policy and add a Tunnel-Type and a Service-Type condition.
- D. Configure each Remote Access server to use a RADIUS server named NPS1.
- E. On NPS1, create a RADIUS client template and use the template to create RADIUS clients.

**Answer:** CD

#### **Explanation:**

Connection request policies are sets of conditions and settings that allow network administrators to designate which RADIUS servers perform the authentication and authorization of connection requests that the server running Network Policy Server (NPS) receives from RADIUS clients. Connection request policies can be configured to designate which RADIUS servers are used for RADIUS accounting.

When you configure Network Policy Server (NPS) as a Remote Authentication Dial-In User Service (RADIUS) proxy, you use NPS to forward connection requests to RADIUS servers that are capable of processing the connection requests because they can perform authentication and authorization in the domain where the user or computer account is located. For example, if you want to forward connection requests to one or more RADIUS servers in untrusted domains, you can configure NPS as a RADIUS proxy to forward the requests to the remote RADIUS servers in the untrusted domain.

To configure NPS as a RADIUS proxy, you must create a connection request policy that contains all of the information required for NPS to evaluate which messages to forward and where to send the messages.

[http://technet.microsoft.com/en-us/library/cc730866\(v=ws.10\).aspx](http://technet.microsoft.com/en-us/library/cc730866(v=ws.10).aspx)

#### QUESTION 12

Your network contains an Active Directory domain named contoso.com.

All user accounts reside in an organizational unit (OU) named OU1.

You create a Group Policy object (GPO) named GPO1.



You link GPO1 to OU1.

You configure the Group Policy preference of GPO1 to add a shortcut named Link1 to the desktop of each user.

You discover that when a user deletes Link1, the shortcut is removed permanently from the desktop.

You need to ensure that if a user deletes Link1, the shortcut is added to the desktop again. What should you do?

- A. Modify the Link1 shortcut preference of GPO1.
- B. Enable loopback processing in GPO1.
- C. Enforce GPO1.
- D. Modify the Security Filtering settings of GPO1.

**Answer: A**

**Explanation:**

This type of preference item provides a choice of four actions: Create, Replace, Update, and Delete. The behavior of the preference item varies with the action selected and whether the shortcut already exists.

|                |  |
|----------------|--|
| <b>Create</b>  | Create a new shortcut for computers or users.  |
| <b>Delete</b>  | Remove a shortcut for computers or users.  |
| <b>Replace</b> | Delete and recreate a shortcut for computers or users. The net result of the <b>Replace</b> action is to overwrite the existing shortcut. If the shortcut does not exist, then the <b>Replace</b> action creates a new shortcut.   |
| <b>Update</b>  | Modify settings of an existing shortcut for computers or users. This action differs from <b>Replace</b> in that it only updates shortcut settings defined within the preference item. All other settings remain as configured in the shortcut. If the shortcut does not exist, then the <b>Update</b> action creates a new shortcut. |

<http://technet.microsoft.com/en-us/library/cc753580.aspx>

<http://technet.microsoft.com/en-us/library/cc753580.aspx>

### QUESTION 13

Your network contains an Active Directory domain named contoso.com.

All domain controllers run Windows Server 2012 R2.

The domain contains 500 client computers that run Windows 8.1 Enterprise and Microsoft Office 2013.

You implement a Group Policy central store.

You need to modify the default Microsoft Office 2013 Save As location for all client computers.

The solution must minimize administrative effort.

What should you configure in a Group Policy object (GPO)?

- A. The Group Policy preferences
- B. An application control policy
- C. The Administrative Templates
- D. The Software Installation settings

**Answer: A**

**Explanation:**

Group Policy preferences provide the means to simplify deployment and standardize configurations. They add to Group Policy a centralized system for deploying preferences (that is, settings that users can change later).

You can also use Group Policy preferences to configure applications that are not Group Policy-aware. By using Group Policy preferences, you can change or delete almost any registry setting, file or folder, shortcut, and more.

You are not limited by the contents of Administrative Template files.

<http://technet.microsoft.com/en-us/library/dn581922.aspx>

**QUESTION 14**

You have a server named WSUS1 that runs Windows Server 2012 R2. WSUS1 has the Windows Server Update Services server role installed and has one volume.

You add a new hard disk to WSUS1 and then create a volume on the hard disk.

You need to ensure that the Windows Server Update Services (WSUS) update files are stored on the new volume.

What should you do?

- A. From a command prompt, run `wsusutil.exe` and specify the `movecontent` parameter.
- B. From the Update Services console, run the Windows Server Update Services Configuration Wizard.
- C. From the Update Services console, configure the Update Files and Languages option.
- D. From a command prompt, run `wsusutil.exe` and specify the `export` parameter.

**Answer:** A

**Explanation:**

A. configuration wizard will be run immediately after installation or at a later time. If you want to change the configuration later, you run WSUS Server Configuration Wizard from the Options page of the WSUS 3.0 Administration console

B. Changes the file system location where the WSUS server stores update files, and optionally copies any update files from the old location to the new location

C. The export command enables you to export update metadata to an export package file. You cannot use this parameter to export update files, update approvals, or server settings.

D. Allows you to specify where store downloaded update file, will not move already downloaded updates

[http://technet.microsoft.com/en-us/library/cc720475\(v=ws.10\).aspx](http://technet.microsoft.com/en-us/library/cc720475(v=ws.10).aspx)

[http://technet.microsoft.com/en-us/library/cc708480\(v=ws.10\).aspx](http://technet.microsoft.com/en-us/library/cc708480(v=ws.10).aspx)

[http://technet.microsoft.com/en-us/library/cc720466\(v=ws.10\).aspx](http://technet.microsoft.com/en-us/library/cc720466(v=ws.10).aspx)

## Thank You for Trying Our Product

### Lead2pass Certification Exam Features:

- ★ More than **99,900** Satisfied Customers Worldwide.
- ★ Average **99.9%** Success Rate.
- ★ **Free Update** to match latest and real exam scenarios.
- ★ **Instant Download** Access! No Setup required.
- ★ Questions & Answers are downloadable in **PDF** format and **VCE** test engine format.
- ★ Multi-Platform capabilities - **Windows, Laptop, Mac, Android, iPhone, iPod, iPad.**
- ★ **100%** Guaranteed Success or **100%** Money Back Guarantee.
- ★ **Fast**, helpful support **24x7**.



View list of all certification exams: <http://www.lead2pass.com/all-products.html>



Microsoft



ORACLE



CITRIX



JUNIPER  
NETWORKS



EMC<sup>2</sup>  
where information lives®

**10% Discount Coupon Code: ASTR14**