



**Vendor:** Microsoft

**Exam Code:** 74-409

**Exam Name:** Server Virtualization with Windows Server  
Hyper-V and System Center

**Version:** DEMO

### QUESTION 1

You administer a Windows Server 2012 R2 server that has the Hyper-V role installed. You deploy a new virtual machine. You add two virtual network adapters to the virtual machine. You need to ensure that the virtual machine maintains network connectivity if one virtual network adapter fails. What should you do?

- A. Run the Windows PowerShell cmdlet Enable-VMReplication.
- B. Enable Dynamic Host Configuration Protocol (DHCP) Guard.
- C. Run the Windows PowerShell cmdlet Set-VMHost.
- D. Run the Windows PowerShell cmdlet Set-VMNetworkAdapter.

**Answer: D**

### QUESTION 2

You administer a server that runs Windows Server 2012 R2 that has the Hyper-V role installed. You plan to apply an update to a virtual machine (VM). You have the following requirements:

- You must be able to quickly revert back to a pre-update state.
- The solution must minimize storage requirements on the server.

You need to apply the update. What should you do?

- A. Run the Windows PowerShell cmdlet New-VirtualDiskClone.
- B. Create a checkpoint of the VM.
- C. Run the Windows PowerShell cmdlet Export-VMSnapshot.
- D. Export the VM.

**Answer: B**

### QUESTION 3

A company has Windows Server 2012 R2 servers that have the Hyper-V role installed. The guest virtual machines are configured as follows:

| Configuration                 | Description         |
|-------------------------------|---------------------|
| Operating System              | Windows Server 2012 |
| Virtual Machine Generation    | Generation 1        |
| Operating System Drive Format | .vhdx               |
| Data Drive Format             | .vhd                |

You need to ensure that the environment supports online virtual hard disk resizing. What should you do?

- A. Convert the virtual machines to Generation 2 virtual machines.
- B. Deploy clustered storage spaces.
- C. Convert the drive format of the virtual machines to the VHDX file format.
- D. Deploy Serial Attached SCSI (SAS).

**Answer: C**

#### QUESTION 4

A Windows Server 2012 R2 Hyper-V host server has four network adapters that are connected to two different network switches, server contains a virtual machine named NYC- WEB. You have the following requirements:

- increase the available bandwidth for NYC-WEB
- implement network fault tolerance for NYC-WEB without modifying network switch configurations
- use the least amount of administrative effort

You need to configure the Hyper-V environment. What should you do first?

- A. Enable NIC teaming. Configure the team to use Static Teaming mode.
- B. Enable NIC teaming. Configure the team to use Switch Independent mode.
- C. Enable Bandwidth Management on NYC-WEB.
- D. Run the Windows PowerShell command Set-NetLbfoTeam -Name Team1 -TeamingMode Static.

**Answer: B**

#### QUESTION 5

Drag and Drop Question

You administer a Windows Server 2012 R2 server that has the Hyper-V role installed. The host server has the following configuration:

| Server     | Switch         | VLAN ID | Description            |
|------------|----------------|---------|------------------------|
| VM-SERVER1 | VirtualSwitch1 | 30      | Lab Environment        |
| VM-SERVER2 | VirtualSwitch2 | 50      | Production Environment |

You deploy a new lab virtual machine named VM-SERVER3. You need to ensure that VM-SERVER3 communicates only with VM-SERVER1. Which three actions should you perform in sequence? To answer, move the appropriate actions from the list of actions to the answer area and arrange them in the correct order.

On VM-SERVER3, add a virtual network adapter and associate it with VirtualSwitch1.

Run the Windows PowerShell cmdlet **Enable-VMSwitchExtension**.

On VM-SERVER3, add a virtual network adapter and associate it with VirtualSwitch2.

Enable virtual LAN (VLAN) identification.

Configure a virtual LAN (VLAN) ID of 50.

Configure a virtual LAN (VLAN) ID of 30.

**Answer:**

Box 1:

On VM-SERVER3, add a virtual network adapter and associate it with VirtualSwitch1.

Box 2: Enable virtual LAN (VLAN) identification.

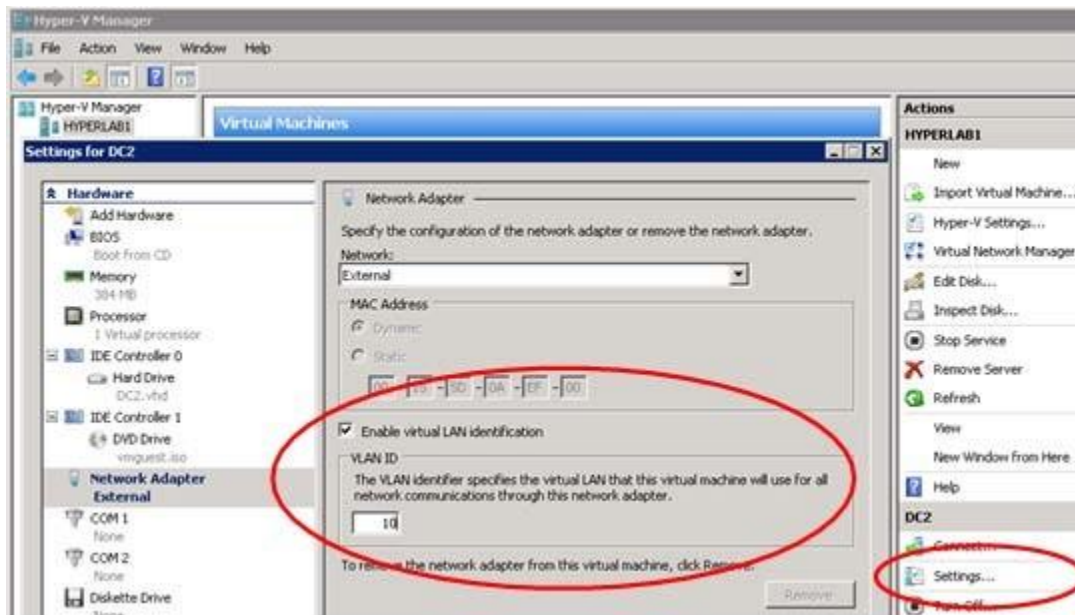
Box 3:

Configure a virtual LAN (VLAN) ID of 30.

### Explanation:

Note:

For step 2 and step 3 refer to the diagram below.



Incorrect:

Not Enable-VMSwitchExtension: The Enable-VMSwitchExtension cmdlet enables one or more extensions on one or more switches. You can use the Get-VMSwitchExtension cmdlet to enumerate the virtual switch extensions installed on the system.

### QUESTION 6

A company plans to create a Hyper-V environment that will contain three virtual machines (VMs). A limited amount of storage space is available to host the VMs. The VMs will be configured as follows:

| Virtual Machine Name | Operating System       | Server Role                      |
|----------------------|------------------------|----------------------------------|
| NYC-EX1              | Windows Server 2012    | Exchange Server 2013             |
| NYC-DC1              | Windows Server 2012    | Active Directory Domain Services |
| NYC-SQL1             | Windows Server 2008 R2 | SQL Server 2008                  |

You must maximize disk performance. You need to recommend a storage solution. Which type of virtual disk type should you configure for each VM?

A. pass-through

- B. fixed
- C. dynamically expanding
- D. differencing

**Answer: B**

#### QUESTION 7

Hotspot Question

You administer the Hyper-V environment for a company. All virtual machines must use dynamic memory and virtual non-uniform memory access (NUMA) settings that are aligned to the underlying hardware.

One virtual machine is misconfigured.

You need to update the misconfigured virtual machine. In the Settings dialog box for the virtual machine, which two options should you select?



**Answer:**



### QUESTION 8

A company has servers that run Windows Server 2012 R2. The company has one Active Directory Domain Services (AD DS) domain.

A user reports that USB devices are not redirected when he uses the Virtual Machine Connection tool to connect to a virtual machine USB device redirection works for other users that connect to this VM.

You need to ensure that USB devices are redirected for all users when they connect to this VM. What should you do?

- A. Add the user as a member of the Administrators group on the VM.
- B. Ensure that the Allow enhanced session mode setting is set to Enabled on the VM.
- C. Ensure that the Remote Desktop Services service is running on the VM.
- D. Add the user as a member of the Administrators group on the AD DS domain.

**Answer: A**

### QUESTION 9

A company has seven Windows Server 2012 R2 virtual machines (VMs). The VMs are running and are accessible over the network. You plan to copy a large .ISO file from the host server to each of the VMs.

The copy operations must meet the following requirements:

- The VMs must remain accessible over the network during the copy operations.
- The copy operations must NOT use a network connection.

You need to configure the VMs. What should you do on each VM?

- A. Enable the Guest services integration service.
- B. Enable the Data Exchange integration service.
- C. Add a network adapter, and then enable the virtual machine queue (VMQ) option on the adapters.
- D. Set the value of the Smart Paging File Location property to %SYSTEMROOT%\temp.

**Answer: A**

#### QUESTION 10

A company has one central data center and five branch offices. Each office has three Hyper- V host servers that run Windows Server 2012 R2 Datacenter edition. Each branch office has a system administrator. You plan to deploy virtual machines (VMs) that run Windows Server 2012 R2 Standard edition to each branch office.

You have the following requirements:

- The VMs must be activated at the branch offices, even if the branch office has no Internet connectivity.
- Activation keys must NOT be shared with the branch office administrators.
- You must be able to track license usage from the central location, even without access rights to the VMs.
- You must be able to verify license compliance and perform real time reporting on license usage from a central location.

You need to configure licensing and activation for the VMs.  
Which feature or tool should you use?

- A. Multiple Activation Key (MAK)
- B. Volume Activation Management Tool (VAMT)
- C. Key Management Service (KMS)
- D. Automatic Virtual Machine Activation (AVMA)

**Answer: D**

## Thank You for Trying Our Product

### PassLeader Certification Exam Features:

- ★ More than **99,900** Satisfied Customers Worldwide.
- ★ Average **99.9%** Success Rate.
- ★ **Free Update** to match latest and real exam scenarios.
- ★ **Instant Download** Access! No Setup required.
- ★ Questions & Answers are downloadable in **PDF** format and **VCE** test engine format.
- ★ Multi-Platform capabilities - **Windows, Laptop, Mac, Android, iPhone, iPod, iPad**.
- ★ **100%** Guaranteed Success or **100%** Money Back Guarantee.
- ★ **Fast**, helpful support **24x7**.

View list of all certification exams:

<http://www.passleader.com/all-products.html>



**10% Discount Coupon Code: STNAR2014**