

Exam Code: 9A0-080

Exam Name: Adobe Captivate 3 ACE Exam

Vendor: Adobe

Version: DEMO

Part: A

1: You want to create a demo that will be delivered as a single Flash.swf file. Which recording preference produces extra.swf files?

- A.record keystrokes
- B.hear camera sounds during recording
- C.automatically use full motion recording
- D.record in demonstration mode

Correct Answers: C

2: You want to publish your project as a SWF so it can be viewed over the Web via a Web browser. You do NOT want your screen captures to be too wide or tall. Which Software Simulation option will allow you to control the size of the capture area?

- A.Application
- B.Custom Size
- C.Full Screen
- D.Scenario Simulation

Correct Answers: B

3: You will be deploying your Adobe Captivate movie in a Web browser to a broad audience. Users will have a low bandwidth connection and video quality will have to be set to Standard. Which Windows display setting should you choose to provide the best graphic appearance?

- A.set the Windows display color quality to 32-bit
- B.use a blank screen saver
- C.turn off gradients in Active and Inactive Title bars
- D.eliminate icons on desktop

Correct Answers: C

4: You want to realistically record the time it takes for a process to complete during the recording process. Which Recording setting should you use? A.Auto Recording. B.Record keystrokes. C.Record actions in real time. D.Manual Recording. You want to realistically record the time it takes for a process to complete during the recording process. Which Recording setting should you use?

- A.Auto Recording.
- B.Record keystrokes.
- C.Record actions in real time.
- D.Manual Recording.

Correct Answers: C

5: You want to record an application so the Captivate movie contains the following settings after you record:

- Click Boxes with Failure and Hint Captions
- Text Entry Boxes with Failure and Hint Captions and two attempts

Which recording option should you choose?

- A.Demonstration
- B.Assessment Simulation
- C.Training Simulation
- D.Custom

Correct Answers: C

6: Which rollover slidelet objects can contain navigation:

- A.Rollover Slidelet.
- B.Slidelet.
- C.Both the Rollover Slidelet and Slidelet.
- D.Neither the Rollover Slidelet or the Slidelet.

Correct Answers: B

7: Which rollover caption objects can contain audio?

- A.Rollover Caption.
- B.Rollover Area.
- C.Both the Rollover Caption and Rollover Area.
- D.Neither the Rollover Caption or the Rollover Area.

Correct Answers: C

8: You have placed a highlight box over an image object and you want everything surrounding the box to be completely gray. What should you do?

- A.set fill color to gray
- B.set frame color to gray
- C.Select Fill outer area and set the Fill color to gray
- D.set fill transparency to gray 100%

Correct Answers: C

9: You have placed an image into a zoom destination area. You want the background to be grayed out. What should you do?

- A.Select the Zoom Area; then, select the Zoom Area tab from the Zoom Area dialog box and set a value for Fill transparency.
- B.Select the Zoom Destination Area; then, select the Zoom Destination Area tab from the Zoom Destination Area dialog box and set a value for Fill transparency
- C.Select the Zoom Destination Area; then, select the Zoom Destination Area tab from the Zoom Destination Area dialog box and set a value for Frame color.
- D.Select the Zoom Area; then, select the Zoom Area tab from the Zoom Area dialog box and select Fill outer area.

Correct Answers: D

10: You are working with a rollover slidelet. The slidelet times out while an audio file from the slidelet is running. What happens to the audio file?

- A.it stops running
- B.it rewinds

- C.it plays to the end
- D.it will stutter and get out of sync

Correct Answers: A

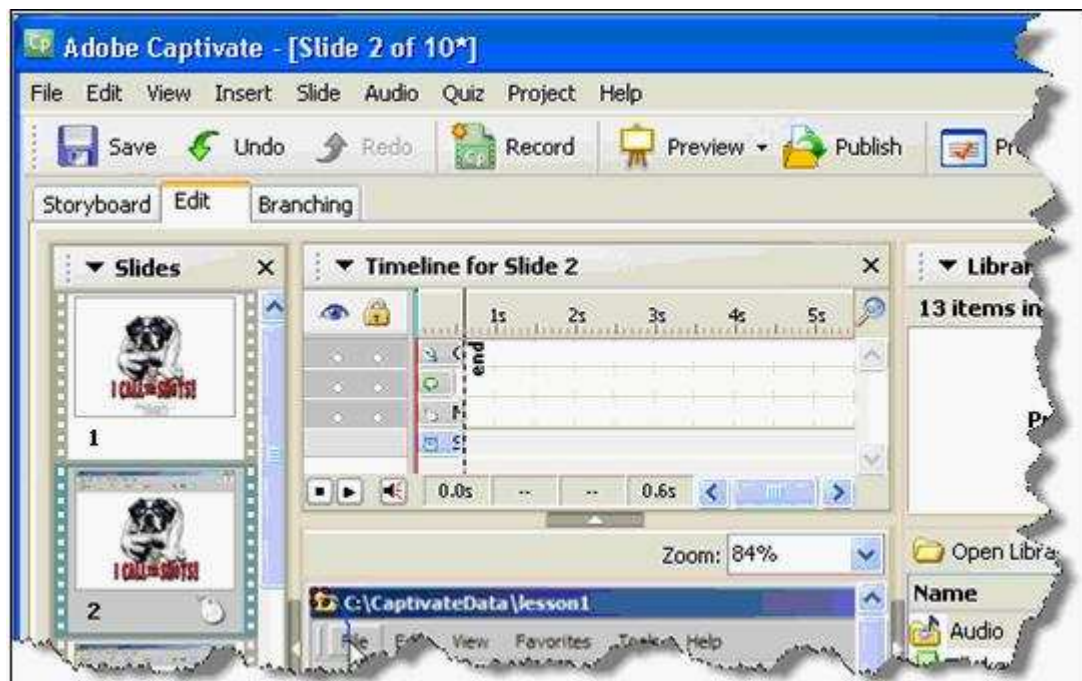
11: Which term is used to identify the red rectangle that appears above the Timeline when you Preview a slide?

- A.Red rectangle
- B.Playhead
- C.Progression Tool
- D.Synchronize Tool

Correct Answers: B

12: Click the Exhibit button.

Which option would make the Timeline easier to manage?



- A.Choose View > Thumbnail Size > Large
- B.Choose View > Magnification > 200%
- C.Choose the View Settings icon (magnifying glass) and choose Large
- D.Choose View > Full Screen

Correct Answers: C

13: Click the Exhibit button.

Where will the next object added to the slide appear in the Timeline?



- A. The new object will be inserted just above the active layer
- B. The new object will be inserted just above the Slide layer
- C. The new object will be inserted at the top of the Timeline and at the Playhead position.
- D. The new object will be inserted just above the anchored object.

Correct Answers: C

14: You want object A to appear on the slide before object B. What should you do?

- A. Move the object A higher on the Timeline than object B.
- B. Move the object B higher on the Timeline than object A.
- C. Move the object A farther to the right on the Timeline than object B.
- D. Move the object A farther to the left on the Timeline than object B.

Correct Answers: C

15: You want to prevent changes from being made to a Timeline object. What should you do?

- A. Remove the object from the Library.
- B. Remove the object from the Timeline.
- C. Hide the object by clicking in the Show/Hide All Items area to the left of the object.
- D. Lock the object by clicking in the Lock/Unlock All Items area to the left of the object.

Correct Answers: D

16: You add a Button object to a slide. When a user clicks on the button, you want the user to progress to the next slide. Sometimes the button works, and sometimes it does NOT work. Why does this happen?

- A. Because of changes in the Microsoft Internet Explorer browser, objects such as Flash must first be clicked by the user to activate them.
- B. The On success property for the button has been left at the default action of Continue.
- C. A Click Box object has also been inserted on the slide. Buttons and Click Boxes CANNOT be

on the same slide.

D.The inactive area of the button is too close to where the button appears on the slide.

Correct Answers: B

17: A user successfully clicks within a click box. When should you choose Continue instead of Go to next slide from the On success property in the Click Box tab of the Click Box dialog box?

A.When you have NOT removed the dead air on a slide and you do NOT want it to play.

B.When you do NOT want to skip the next slide in the project.

C.When you have multiple, timed objects on a slide and want each of the objects to play before the next slide appears.

D.There is NO difference between Continue and Go to next slide.

Correct Answers: C

18: You have created a text entry box to receive answers from users. You also want users to see their previously entered answer if they return to this slide by using the Back button. What should you do?

A.Add responses to the Correct entries section.

B.Select Retain Text.

C.Select Infinite attempts.

D.Leave the Default text field blank

Correct Answers: B

19: You want a button to show the up, down and hover state of button as the user clicks on it. What should you do?

A.Insert a text button.

B.Select Show hand mouse cursor when over button from the Options tab of the Button dialog box.

C.Insert an image button

D.Select Transparent from the Button tab of the Button dialog box.

Correct Answers: C

20: You have inserted a Click Box object that opens a URL when clicked by the user. After a review of your Captivate project, you are asked to change the Click Box so the URL opens in a new window. What should you do?

A.Choose Execute JavaScript for the On success property. Then create a script that opens the new window.

B.Configure the size of the click box to be the same as the window you want to open where the URL will appear.

C.Edit the Slide Properties and choose Open URL or File for the Navigation property.

D.In the Click Box tab choose Open URL or File for the Navigation property; then, choose New for the destination window.

Correct Answers: D