

Exam Code: 922-072

Exam Name: BCM50 Rls.3.0 BCM200/400 Rls 4.0 BCM
450 Rls. 1.0 Config

Vendor: Nortel

Version: DEMO

Part: A

1: You have installed a DSM32+ MBM in slot 1 of a new BCM450 main unit and you want to connect a set and perform set-based programming. What is the next step?

- A. Identify the module.
- B. Deconfigure the module.
- C. Configure the module.
- D. Connect a set to the DSM32+.

Correct Answers: D

2: Click on the Exhibit button.

You want to configure an expansion unit Media Bay Module (MBM) on a BCM450. You highlighted the expansion 1 row on the Telephony Resources screen.

What is your next step?

Location	Configured Device	Dip Switch	Bus	State	Low	High	Total
Internal	IP Trunks	N/A	N/A	N/A	001	008	8
Internal	IP Sets	N/A	N/A	N/A	253	268	16
Internal	Applications	N/A	N/A	N/A	300	399	100
Main MBM 1	DSM32/DSM32+ MBM	All On	N/A	N/A	221	252	32
Main MBM 1.1	DSM16	N/A	10.1	Enabling...	221	236	16
Main MBM 1.2	DSM16	N/A	11.1	Enabling...	237	252	16
Main MBM 2	None	N/A	N/A	N/A	N/A	N/A	N/A
Main MBM 3	None	N/A	N/A	N/A	N/A	N/A	N/A
Main MBM 4	None	N/A	N/A	N/A	N/A	N/A	N/A
Expansion 1	None	N/A	N/A	N/A	N/A	N/A	N/A

- A. Click the Deconfigure button and click OK.
- B. Click the Configure button and modify the values.
- C. Double-click the Configured Device field and select MBM-6.
- D. Double-click the Configured Device field and select the type of MBM you want to install.

Correct Answers: C

3: A customer with a BCM400 has a requirement of one T1, six PSTN analog lines and 12 digital telephones. What are the minimum Media Bay Module (MBM) requirements?

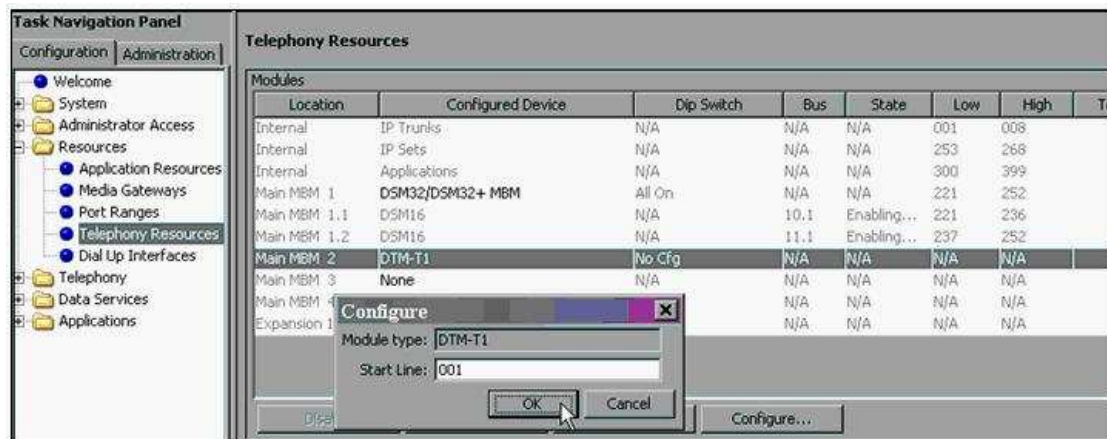
- A. one DTM and one G8X16
- B. one BRIM and one GASM8
- C. one GATM8 and one G4X16
- D. one GATM4 and one DSM16+

Correct Answers: A

4: Click the Exhibit button.

You are configuring a DTM in a new BCM450 main unit. You defined the start line as 001, but you receive an error message when you click OK.

What has to be done to resolve this problem?



- A. Configure the DTM again and accept the default start line.
- B. Configure the DTM again and change the start line of the DTM to 008.
- C. Deconfigure the DTM and then reconfigure the DTM with a start line of 001.
- D. Deconfigure the DTM and then reconfigure the DTM with a start line of 002.

Correct Answers: A

5: A customer is preparing to install a G4X16 module in a BCM450. They want the module to automatically download firmware upgrades. The country DIP switches (the right set of switches) must be confirmed they are in the correct position. What must the customer ensure about the country DIP switches?

- A. that all of the country DIP switches are set to Off
- B. that all of the country DIP switches are set to On
- C. that the first country DIP switch is set to Off and the rest are set to On
- D. that the first two country DIP switches are set to On and the rest are set to Off

Correct Answers: A

6: A point-to-point PRI on the BCM to a second BCM has been installed. The second BCM has a 6 digit DN length. Route 010, that has a Private "DN type", is being used. When making a call to the second BCM, only four digits are able to be dialed, and then a fast busy signal is received. Which process needs to be completed to correct this problem?

- A. The public DN length needs to be programmed for 6 digits.
- B. The private DN length needs to be programmed for 6 digits.
- C. The private network type needs to be programmed as UDP.
- D. The private network type needs to be programmed as CDP.

Correct Answers: B

7: Which statement about set templates is true?

- A. You can copy and paste a set template from one BCM to another.
- B. You can choose from three default templates named DN, PBX and DID on BCM450.
- C. You can use set templates to quickly assign voicemail mailboxes to several telephones at once.
- D. You can choose to backup and restore only set templates and exclude the remaining data.

Correct Answers: C

8: Which statement about changing schedule times is true?

A.Start and stop times can span days.

B.Overlapping times cannot be assigned.

C.If 00:00 is assigned as the start and stop time for a schedule, that schedule is in effect all day.

D.It is only necessary to configure start and stop times for schedules that are activated automatically.

Correct Answers: D

9: On a company's default system, six buses of DS30 channel blocks are assigned to Media Bay Modules (MBM) (2/6 channel split). The DS30 allocation needs to be changed to a 3/5 split to accommodate increased IP telephony requirements. How is this change accomplished?

A.The BCM 200/400 assigns bus 6 to the system bus resource.

B.The BCM 200/400 assigns bus 7 to the system bus resource.

C.The BCM 200/400 assigns bus 6 to the system bus resource through the MBM dip switches.

D.The BCM 200/400 assigns bus 7 to the system bus resource, although all telephony programming will be defaulted.

Correct Answers: B

10: Click on the Exhibit button.

While configuring a DTM module on a BCM450, the module was mistakenly identified as a DTM-PRI instead of a DTM-T1.

What must you do to correct the module identification?

A.Select the row of the DTM you configured. Click the Configure button and enter ?TM-T1?as the module type.

B.Select the row of the DTM you configured. Click the Deconfigure button. Click OK. Double-click the ?onfigured Device?column and select ?TM-T1?as the module type.

C.Select the row of the DTM you configured. Double-click the ?onfigured Device?column and select ?D.

D.Select the row of the DTM you configured. Click the Disable button. Click OK.

Location	Configured Device	Dip Switch	Bus	State	Low	High	To
Internal	IP Trunks	N/A	N/A	N/A	001	020	
Internal	IP Sets	N/A	N/A	N/A	253	268	
Internal	Applications	N/A	N/A	N/A	300	399	
Main MBM 1	DSM32/DSM32+ MBM	All On	N/A	N/A	221	252	
Main MBM 1.1	DSM16	N/A	10.1	Enabling...	221	236	
Main MBM 1.2	DSM16	N/A	11.1	Enabling...	237	252	
Main MBM 2	DTM-PRI	All On	20.1	Enabling...	021	043	
Main MBM 3	None	N/A	N/A	N/A	N/A	N/A	
Main MBM 4	None	N/A	N/A	N/A	N/A	N/A	
Expansion 1	None	N/A	N/A	N/A	N/A	N/A	

A.Select the row of the DTM you configured. Click the Configure button and enter DTM-T1 as the module type.

B.Select the row of the DTM you configured. Click the Deconfigure button. Click OK. Double-click the Configured Device column and select DTM-T1 as the module type.

C.Select the row of the DTM you configured. Double-click the onfigured Device column and select DTM-T1 as the module type.

D. Select the row of the DTM you configured. Click the Disable button. Click OK. Double-click the Configured Device column and select DTM-T1 as the module type.

Correct Answers: B