

**Exam Code:** 920-470

**Exam Name:** Nortel Converged Office for Comm Svr 1000

Rls5.x Plan & Eng

**Vendor:** Nortel

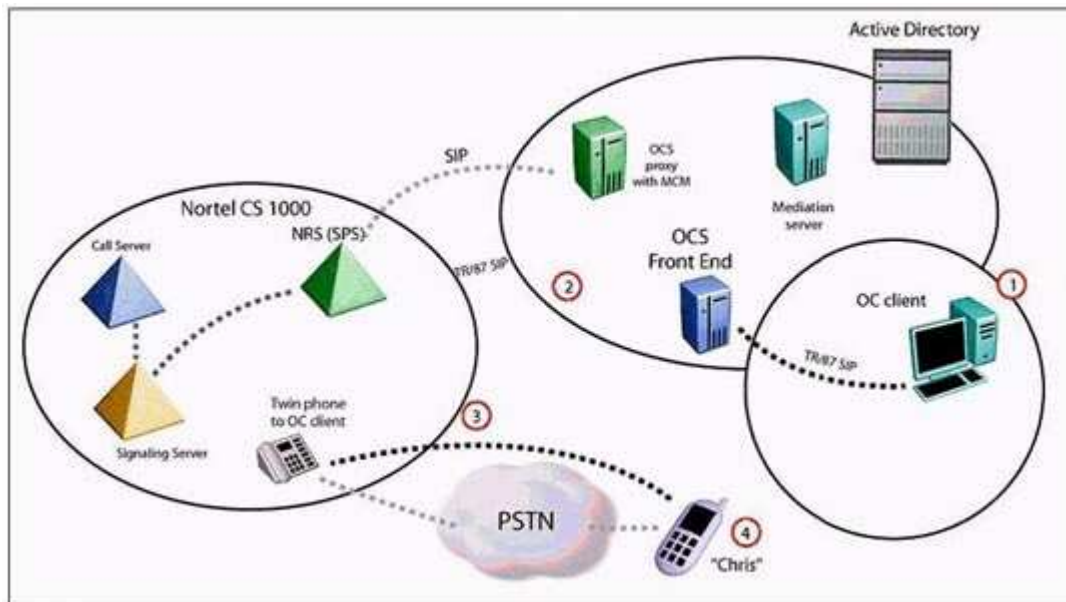
**Version:** DEMO

## Part: A

1: Click on the Exhibit button.

You are dispatched to engineer a Converged Office solution with Remote Call Control.

Which component in the exhibit performs the SIP CTI/TR87 functionality?



- A. Application Proxy server
- B. Network Connect Service
- C. Active Directory
- D. Signaling Server

**Correct Answers: D**

2: Which statement most accurately describes the function of the Media Gateway Controller (MGC) card in a Communication Server (CS) 1000E Rls. 5.0 system with Nortel Converged Office?

- A. The MGC supports peripheral cards for TDM services.
- B. The MGC provides basic call processing functions for the CS 1000E.
- C. The MGC provides a gateway controller for IP media gateways in the CS 1000E.
- D. The MGC acts as a Terminal Proxy Server (TPS) or virtual line card for the IP Phones.

**Correct Answers: C**

3: Your supervisor has asked that you verify the licenses for the Communication Server (CS) 1000E as part of a Nortel Converged Office solution for a large customer. Which CS 1000E license provides the virtual trunk functionality between the Office Communicator 2007 clients and the CS 1000E users?

- A. AST
- B. TLSV
- C. SIP Access Ports
- D. SIP CTI TR87

**Correct Answers: C**

4: In preparation for the ordering of a new Nortel Converged Office solution, you need to verify that all the licenses for the Communication Server (CS) 1000E licenses are part of the order request. Which CS 1000E license provides the twinning functionality on the CS 1000E Call Server?

- A.AST
- B.TLSV
- C.SIP CTI TR87
- D.SIP Access Port

**Correct Answers: B**

5: A company is deploying an Enterprise Edition Nortel Converged Office solution. With this solution, which required component balances SIP invites from the Mediation Server and sends them to the least busy Front End Server?

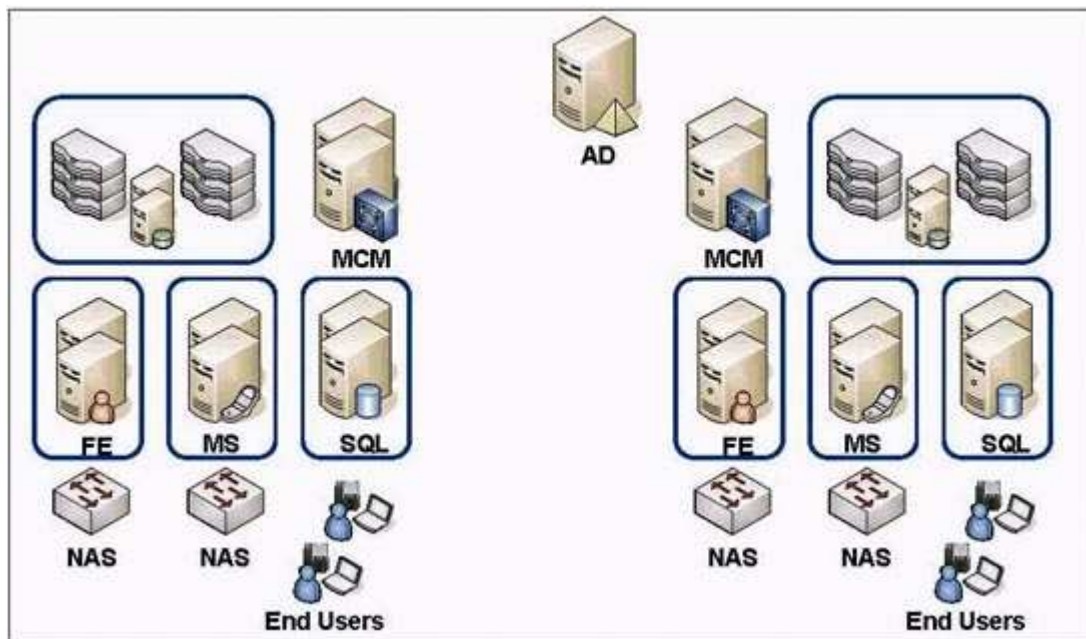
- A.Incoming Load Balancer
- B.Outgoing Load Balancer
- C.Mediation Server
- D.MCM/Application Proxy Server

**Correct Answers: A**

6: Click on the Exhibit button.

A large customer needs a Nortel Converged Office solution that will support high availability for their 50,000 employees and allow for future growth of the organization.

Given the diagram in the exhibit, which Nortel Converged Office deployment option would provide the optimum level of functionality?



- A.OCS 2007 Standard Edition (Small Network) configuration
- B.OCS 2007 Enterprise Edition (Medium Network) expanded configuration
- C.OCS 2007 Enterprise Edition (Large Network) consolidated configuration

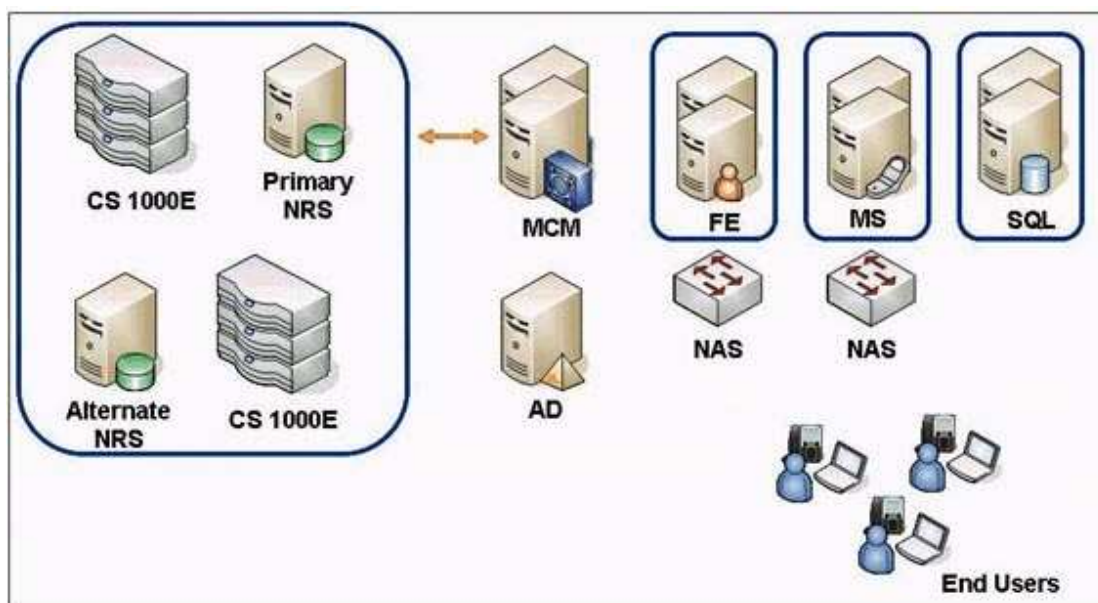
D.OCS 2007 Enterprise Edition (Large Network) expanded configuration

**Correct Answers: D**

7: Click on the Exhibit button.

A new customer needs a Nortel Converged Office solution that will support high availability with system redundancy for their 3,000 employees.

Given the diagram of the solution, which Nortel Converged Office deployment option would provide the optimum level of functionality?



A.OCS 2007 Standard Edition (Small Network) configuration

B.OCS 2007 Enterprise Edition (Medium Network) expanded configuration

C.OCS 2007 Enterprise Edition (Large Network) consolidated configuration

D.OCS 2007 Enterprise Edition (Large Network) expanded configuration

**Correct Answers: B**

8: A manufacturing company with a Nortel Converged Office solution would like to allow their employees Instant Messaging capabilities with third-party Instant Messaging services using federation. Which Converged Office Server will provide this capability?

A.OCS 2007 Front End Server

B.OCS 2007 Web Conferencing Server

C.OCS 2007 Proxy Server

D.OCS 2007 Access Edge Server

**Correct Answers: D**

9: A company is planning to deploy a new Communication Server (CS) 1000E with Nortel Converged Office. They want to provide media security (SRTP) to encrypt the IP media path to and from all of the DSP channels.

Which EC Report shows the correct components?

	Quantity	Item Identifier	Promo Eligibility	Part Number	Description
C A.	1	P	N	NTHU61AA	CS1000E CPPM 0L/0T SA Chassis
	1	P	N	NT8D09CA	Ext. Analogue MW Line Card
	1	P	N	NTAK20AD	Stratum 3 Clock Contr D/Board
	1	P	N	NTBK80BA	Ground Bar Assy Opt11
	1	P	N	NTDU22HA	MG1000E Chassis -R5
	1	P	N	NTDU23AC	MG 1000 Chassis Expander
	1	P	N	NTDW62AAE5	MGC DSP Daughterboard 32
C B.	4	P	N	NTE980TA	All Sys 8-ITG ISDN Trunk Lic
	1	P	N	NTVQ91BB	IP Trunk Pkg R3.0 or later
	1	P	N	AL2001E20	460-24T-PWR DTE-PWR SW (NA PC)
	1	P	N	NTDU41FC	Media Card 32 Port - IPL 4.5
	10	P	N	NTDU92BB70	IP 2004 Charc/Bez T1/KEY WO PS
	1	P	N	NTTQ4201	PW SUP(NA)2245 & 2246
C C.	1	P	N	NTE900HC	CS 1000M CABINET SYS SW
	10	P	N	NTE902BA	8 Enh Bus Inet Set License
	2	P	N	NTE902DA	8 Enh Bus Digital Set License
	1	P	N	NTE95006	SW Pkg 57-BARS-BASIC Alternate
	25	P	N	NTE980HA	H 323 Access Port License
C D.	1	P	N	NT1R91BA	Kit 56K Modem & 4 Port Data Sw
	2	P	N	NT4N65AC	Pack Core Network Interface
	7	P	N	NT6D80AC	Multi Purpose Serial Data Link
	63	P	N	NT8D02GA	Digital Line Card 16 Port
	8	P	N	NT8D04BA	Superloop Network Card

**Correct Answers: A**

10: A company is deploying a Standard Edition Nortel Converged Office solution on their current Communication Server (CS) 1000E network. In this configuration, which Front End Server component converts a dialed number into E.164 format, based on the normalization rules defined by the administrator?

- A. User Services
- B. Inbound Router
- C. Outbound Router
- D. Translation Service

**Correct Answers: D**